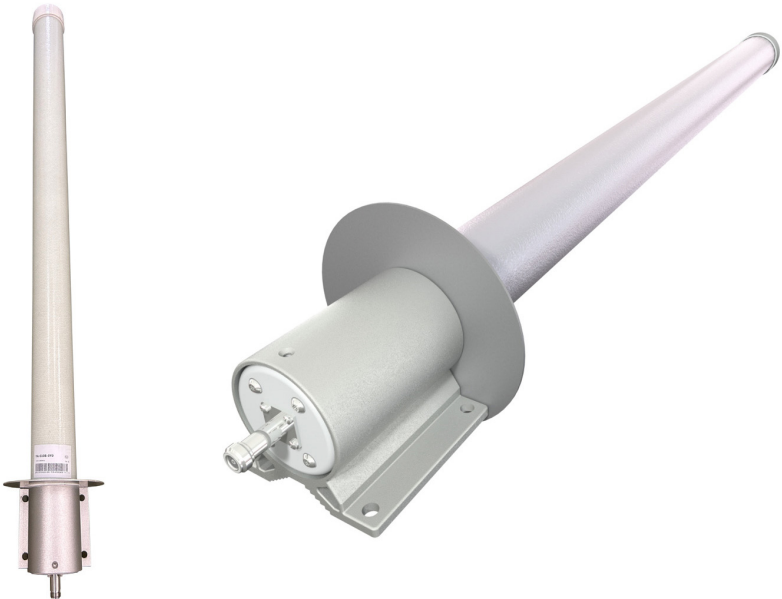


YA-010B-0Y0



PRODUCT OVERVIEW	Frequency Range (MHz)	1710-1880
	Connector	1x N-FEMALE
	Polarization	LINEAR
	Azimuth Beamwidth (avg)	25°
	Dimensions	1260 x 76 x 76 (49.6 x 3 x 3)

ORDERING OPTIONS Select from the following ordering options

ANTENNA MODEL NUMBER	MOUNTING HARDWARE	MOUNTING PIPE DIAMETER	SHIPPING WEIGHT
YA-010B-0Y0	APM50-Y0	30-60 mm (1.2-2.4 in)	3.8 kg (8.4 lbs)

Quoted performance parameters are provided to offer typical, peak or range values only and may vary as a result of normal testing, manufacturing and operational conditions. Extreme operational conditions and/or stress on structural supports is beyond our control. Such conditions may result in damage to this product. Improvements to products may be made without notice.

YA-010B-0Y0

ELECTRICAL SPECIFICATIONS

Frequency Range	MHz	1710-1880
Polarization	---	Linear
Gain	dBi	17.6 ± 1.1
Azimuth Beamwidth	degrees	25.4° ± 2.4°
Elevation Beamwidth	degrees	26.3° ± 2.1°
Impedance	Ohms	50Ω
VSWR (Return Loss)	---	1.5:1 (-14 dB)
Front-to-Back at ±30° Total Power	dB	21.5
Maximum Effective Power Per Port	Watts	100 W

Specifications follow BASTA guidelines.

MECHANICAL SPECIFICATIONS

Dimensions - Height x Width x Depth		mm (in)	1260 x 76 x 76 (49.6 x 3 x 3)
Net Weight - Antenna Only		kg (lbs)	2.6 (5.7)
Net Weight - Mounting Hardware Only		kg (lbs)	0.3 (0.7)
Connector Type		--	(1x) N-Female at Rear of Mounting Tube
Radome Color		---	Light Grey RAL7035
Radome Material		---	Fiberglass
Shipping	Packing Size (Length x Width x Depth)	mm (in)	1360 x 185 x 195 (53.5 x 7.3 x 7.7)
	Shipping Weight	kg (lbs)	3.8 (8.4)

ENVIRONMENTAL SPECIFICATIONS

Operating Temperature	degrees	-40° to +60° C (-40° to +140° F)
Grounding Type	---	DC
Lightning Protection	---	Direct Ground
Ingress Protection	---	IP65
Survival/Rated Wind Velocity	km/h (mph)	200/150 (124/93)

Quoted performance parameters are provided to offer typical, peak or range values only and may vary as a result of normal testing, manufacturing and operational conditions. Extreme operational conditions and/or stress on structural supports is beyond our control. Such conditions may result in damage to this product. Improvements to products may be made without notice.

YA-010B-0Y0


ACCESSORIES

Accessories may be ordered separately unless otherwise indicated.

ITEM	MODEL NUMBER	WEIGHT
Mounting Bracket Kit for Pole Diameter 30-60 mm (1.2-2.4 in)	APM50-Y0	0.3 kg (0.7 lbs)

INSTALLATION

Please read all installation notes before installing product.

	Always attach the antenna using all mounting points.
	Do not install antenna with the connectors facing upwards.

EXTERNAL DOCUMENT LINKS

NOTES

Specifications follow BASTA guidelines.

For additional mounting information, please check **External Document Links**.

For Radiating Patterns: [Request pattern files](#)