

ANTENNA MOUNTING INSTRUCTION EI 1182 issue 3

The part number for the antenna is: **W360-*.*** and **PCNC360-*.***

The part number for these mountings is: **XSL51201**

They are suitable for the OMNI directional antennas and provide the facility to mount the antenna to a vertical pole of diameter 2" to 4 1/2".

PRECAUTIONS

The antenna is mainly plastic and should be treated with care - do not bend the tube.

Beware damaging the lightning finial or injuring people with it.

Do not stand the antenna on end in case it falls over or gets damaged.

Observe safe working practices when climbing, lifting and working overhead

Do not climb the antenna or approach within 3m of it whilst it is powered.

MOUNTING INSTRUCTIONS

1. Identify the parts and how they look when fully assembled, as shown in Figure 1 below:

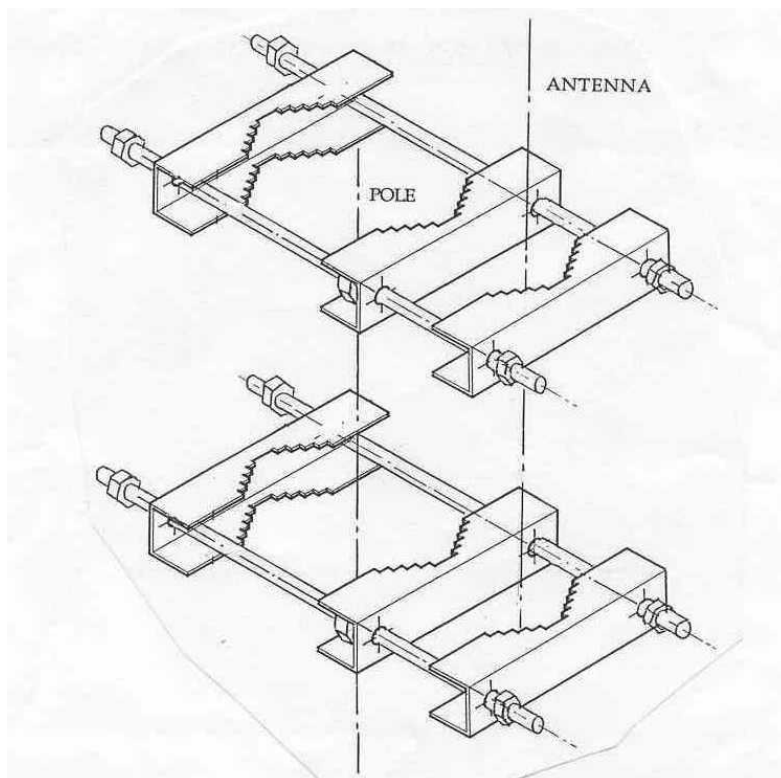


Figure 1: Bracket Assembly

2. Fit two pairs of tube grips to the lower metal sleeve of the antenna, as shown in Figure 2 and 3, with only about 3/8" (10mm) of studding extending out. Ensure the grips are about 3" (80mm) from each end of the antenna sleeve, i.e. well spaced apart, ensuring they are both in line when viewed along the antenna. Hand tighten the nuts sufficiently to prevent the grips from slipping, final tightening will be done on the pole later.

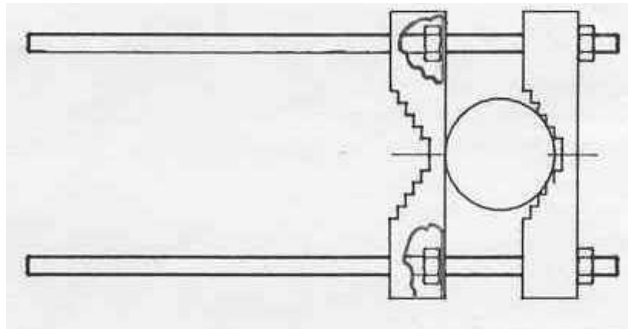


Figure 2: Top view of Bracket Fitment to Antenna

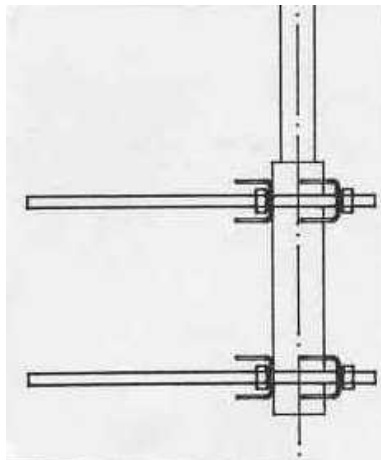


Figure 3: Side View of Bracket Fitment to Antenna

3. Loosely fit a third tube grip, nuts and washers over the extended studding in the two positions shown in Figure 4. Check there is sufficient room to accommodate the size of mounting pole being used. If it is not possible to lower the antenna over the mounting pole the third tube grip can be fixed on one stud only and swung round the pole as the antenna is offered up to it.

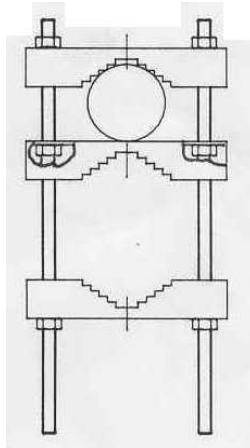


Figure 4: Top View of Bracket with Three Tube Grips

4. Position the antenna, as shown in Figure 5, on the mount pole so that the metal sleeve of the antenna is 1" (25mm) above the top of the pole. The antenna has a slightly better gain in one plane; this is indicated by the labels on the bottom of the antenna tube shown in Figure 6. Rotate the antenna round the pole until this plane points in the direction where best reception is desired. Ensure the antenna is vertical within ± 1 degree in all directions; some adjustment is possible by twisting one clamp relative to the other around the pole.



Figure 5: Antenna Positioning on Mount Pole

5. Tighten the outermost nuts on each of the four studs to 15lb-ft (20Nm), ignore the inner nuts.
6. Fit the earthing stud connection into the base of the antenna as shown in the photograph in Figure 6.



Figure 6: Photograph of Earthing Stud Connection for the W360

7. Make the electrical connection and waterproof them with self amalgamating tape **taking care not to block the drain holes in the base of the antenna around the connector.**