

## UUX063X13x00

Twin Band | Panel Antenna | 2x X-Pol | 65° / 65° | 17.0 / 17.0 dBi | Variable Tilt

- Twin band, 2x X-Pol (Quad-Pol), variable tilt, panel antenna
- Part of Amphenol's UNIVERSAL series of antennas featuring consistent form factors for future-proofing
- Patented internal RET actuator adds no additional length to the antenna
- Features an adjustable mounting bracket channel for custom mounting in any situation




Ordering Options					
When ordering, replace “x” in the model number with one of the options listed below.					
Manual Electrical Tilt		UUX063X13M00			
Remote Electrical Tilt AISG v1.1		UUX063X13R00			
Remote Electrical Tilt AISG v2.0 / 3GPP		UUX063X13G00			
Mounting bracket kits and other accessories are ordered separately.					
Electrical Characteristics		1710-2400 MHz			
Frequency Bands (MHz)		1710-1880	1850-1990	1900-2170	2200-2400
Polarization		2 x ±45°			
Horizontal Beamwidth		70°	67°	65°	65°
Vertical Beamwidth		8.3°	7.5°	7.0°	6.1°
Gain		15.8 dBi	16.5 dBi	16.8 dBi	17.0 dBi
Electrical Downtilt		0-10°			
Impedance		50Ω			
VSWR		< 1.5:1			
Upper Sidelobe Suppression		> 15 dB			
Front-to-Back Ratio		> 28 dB			
In-Band Isolation		> 28 dB			
Isolation Between Ports		> 30 dB			
IM3 (2x20W carrier)		< -153 dBc			
Input Power		250 W			
Total Number of Connectors		Antennas has 4 connectors located at the bottom			
Connectors Per Band, Type, Location	1710-2400 MHz	2 Connectors / 7/16-DIN Female / Bottom			
	1710-2400 MHz	2 Connectors / 7/16-DIN Female / Bottom			
Diplexed		No			
Lightning Protection		Direct Ground			
Operating Temperature		-40° to +60° C (-40° to +140° F)			
Mechanical Characteristics					
Dimensions (Length x Width x Depth)		1298 x 305 x 180 mm		51.1 x 12.0 x 7.1 in	
Weight without Mounting Brackets: MET		11.3 kg		24.9 lbs	
Weight without Mounting Brackets: RET		11.7 kg		25.8 lbs	
Survival Wind Speed		241 km/hr		150 mph	
Wind Loads (160 km/hr or 100 mph)	Front	480 N		108 lbf	
	Side	284 N		64 lbf	



Quoted performance parameters are provided to offer typical or range values only and may vary as a result of normal manufacturing and operational conditions. Extreme operational conditions and/or stress on structural supports is beyond our control. Such conditions may result in damage to this product. Improvements to product may be made without notice.

# UUX063X13x00

Twin Band | Panel Antenna | 2x X-Pol | 65° / 65° | 17.0 / 17.0 dBi | Variable Tilt

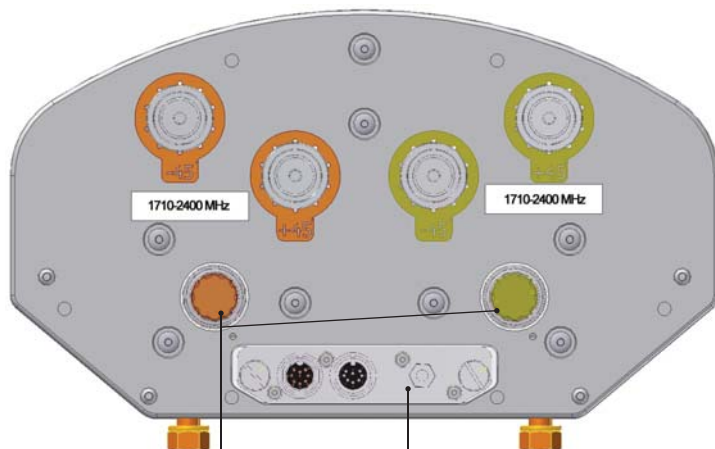
Electrical Downtilt Control				
Electrical downtilt for each band can be controlled separately. Tilt indicator(s) are covered by removable transparent cap(s).				
Manual Electrical Tilt (MET) Control	A colored knob at the end of the tilt indicator allows change of the tilt without need of a tool. The knob color is identical to the corresponding connector ring color. To access the knob, remove the cap by turning it counter-clockwise. It is re-installed by opposite rotation. Do not remove the transparent cap(s) from the antenna.			
Remote Electrical Tilt (RET) Control	The remote control of the electrical tilt is managed by a Multi-Device Control Unit (MDCU) inserted in the bottom of the antenna. A single module individually controls the tilt of each band (no need of daisy chain cables between the bands). This module does not add any additional length to the antenna. For RET control, the transparent cap must be in place and locked. The tilt angle indicators always remain visible and the antenna still has manual tilt control (manual override).			
RET Module	The RET module is factory installed and does not need to be ordered separately.			
	Part Number for AISG v1.1 protocol:	MDCU-A0000	One unit installed in UUX063X13R00	
	Part Number for 3GPP/AISG v2.0 protocol:	MDCU-G0000	One unit installed in UUX063X13G00	
Important Installation Instructions 	In order to operate RET control, the transparent caps covering the tilt adjustment indicators must be engaged and locked. Do not cut them from the antenna.			
	Do not install the antenna with the connectors facing upward.			
Mounting Options	Part Number	Image	Fits Pipe Diameter	Weight
All mounting bracket kits are ordered separately unless otherwise indicated. Select from the options listed below.				
2-Point Mounting Bracket Kit	MKS09P01		50-115 mm 2.0-4.5 in	2.7 kg 6 lbs
2-Point Mounting & Downtilt Bracket Kit	MKS09T01		50-115 mm 2.0-4.5 in	4.5 kg 10 lbs

Quoted performance parameters are provided to offer typical or range values only and may vary as a result of normal manufacturing and operational conditions. Extreme operational conditions and/or stress on structural supports is beyond our control. Such conditions may result in damage to this product. Improvements to product may be made without notice.

# UUX063X13x00

Twin Band | Panel Antenna | 2x X-Pol | 65° / 65° | 17.0 / 17.0 dBi | Variable Tilt

Bottom View of Antenna



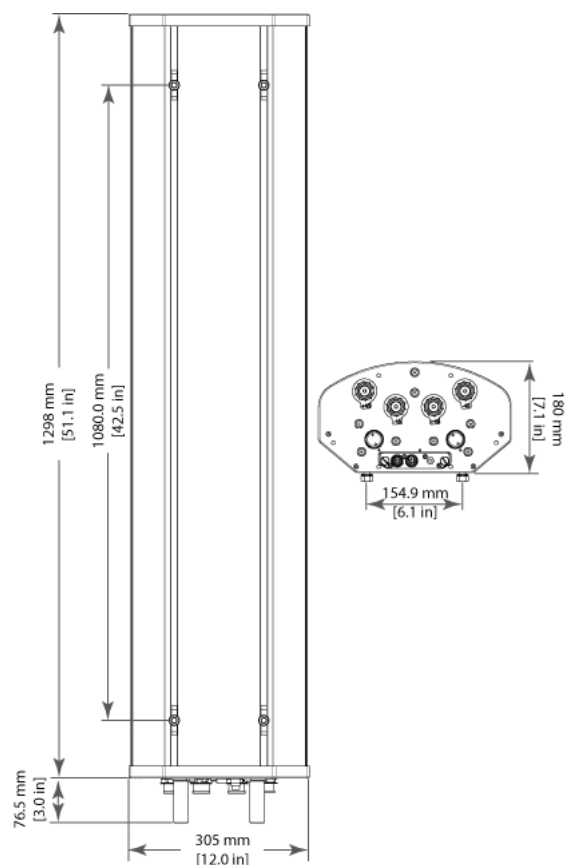
Location of the MDCU  
for RET Control

Tilt indicators covered by transparent caps.  
Manual adjustment is accessed by removing the caps.  
Knob colors are the same as the connectors.



In order to operate RET control, the transparent caps covering the tilt adjustment indicators must be engaged and locked. Do not cut them from the antenna.

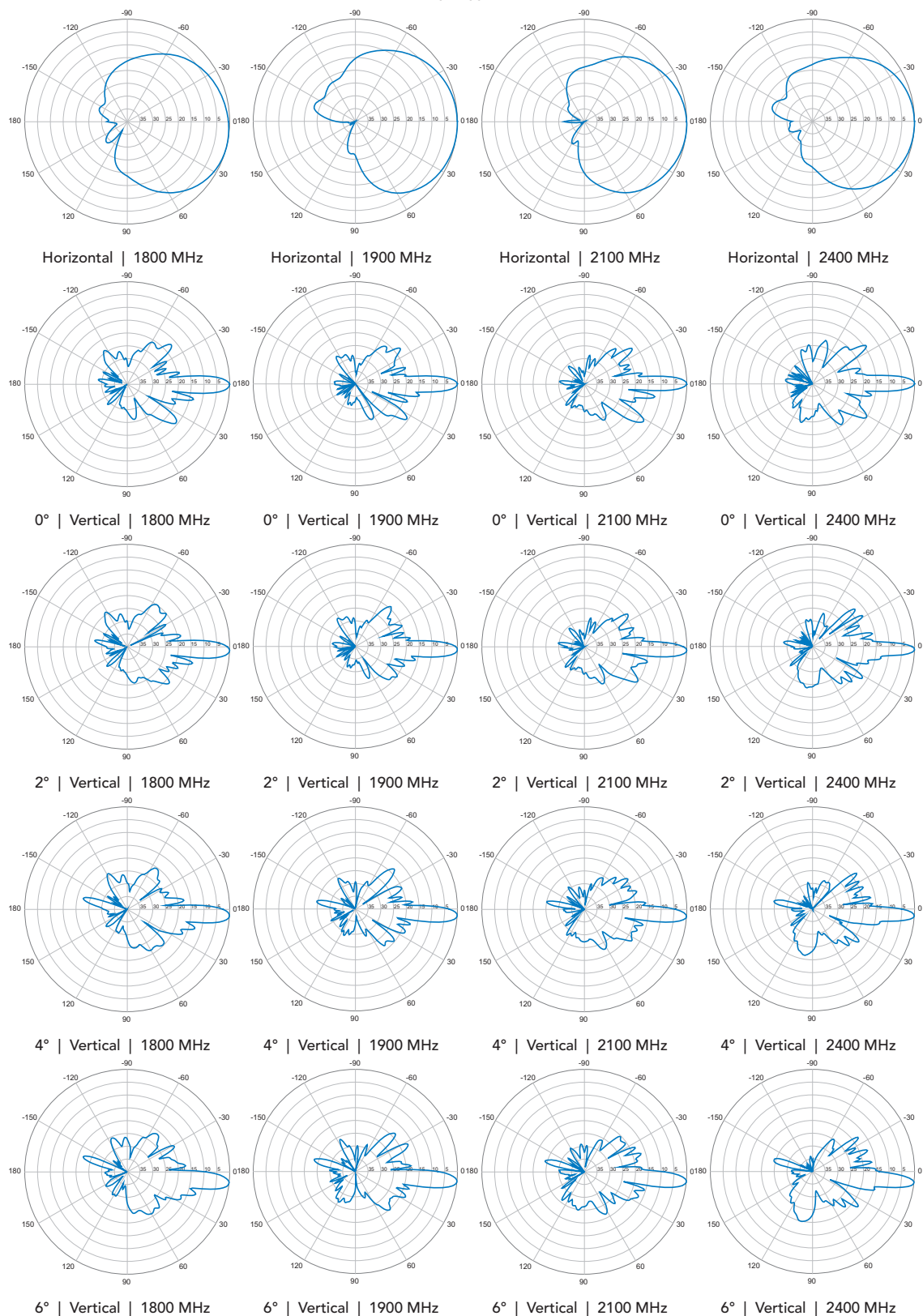
Dimensions



# UUX063X13x00

Twin Band | Panel Antenna | 2x X-Pol | 65° / 65° | 17.0 / 17.0 dBi | Variable Tilt

1710-2400 MHz



Quoted performance parameters are provided to offer typical or range values only and may vary as a result of normal manufacturing and operational conditions. Extreme operational conditions and/or stress on structural supports is beyond our control. Such conditions may result in damage to this product. Improvements to product may be made without notice.

## UUX063X13x00

Twin Band | Panel Antenna | 2x X-Pol | 65° / 65° | 17.0 / 17.0 dBi | Variable Tilt

1710-2400 MHz

