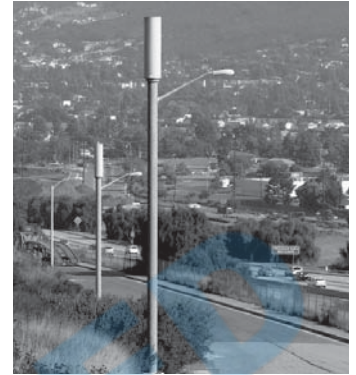


UNX20-xx

20-inch Diameter Antenna Enclosure

- 3-sectors inside cylindrical enclosure
- Accommodates a wide variety of antennas
- Stackable to satisfy co-location requirements
- Removable radome segments for easy field access



Mechanical Characteristics							
UNICELL Model Number (xx)	UNX20-14		UNX20-19		UNX20-25		
Diameter of Radome	511 mm	20.1 in	511 mm	20.1 in	511 mm	20.1 in	
Height	1829 mm	72.0 in	2438 mm	96.0 in	2743 mm	108.0 in	
Weight (excluding antennas)	80.3 kg	177 lbs	90.0 kg	198 lbs	100.7 kg	222 lbs	
Antennas Accommodated	Refer to individual antenna datasheets						
Stackable	Yes		Yes		Yes		
Wind Load (160 km/hr or 100 mph)	463 N	104 lbf	606 N	136 lbf	770 N	173 lbf	
Survival Wind Speed	Single Model	241 km/hr	150 mph	241 km/hr	150 mph	241 km/hr	150 mph
	Stacked Models	201 km/hr	125 mph	160 km/hr	100 mph	137 km/hr	85 mph

Electrical Characteristics	
Gain Loss Through Radome	< 0.3 dB
VSWR	< 1.4:1 Max
Port to Port Isolation	> 28 dB
Sector to Sector Isolation	> 45 dB
Front To Back Ratio	> 25 dB
Refer to individual antenna datasheets for all other electrical specifications	

Accessories	Part Number	Description
Mounting Mast	UNX20-M-120	Mounting mast, 120 in x 20 in diameter
Cable Access Canister	UNX20-C	20-inch UNICELL Canister
Lightning Protection Kit	UNX-LPK	Copper air finial with 6m (20 ft) cable attached

UNICELL Flange Interface	
	OD: 520.7 mm 20.50 in
	ID ₁ : 393.7 mm 15.50 in
	ID ₂ : 179.1 mm 7.05 in
	BCD: 12 x 13.5 mm (0.53 in) diameter on 457.2 mm (18.0 in) diameter bolt circle

Quoted performance parameters are provided to offer typical, peak or range values only and may vary as a result of normal testing, manufacturing and operational conditions. Extreme operational conditions and/or stress on structural supports is beyond our control. Such conditions may result in damage to this product. Improvements to products may be made without notice.