






SO-LLYYZ06-F0

Features

- 4 ports / 2 cross pol systems in mid band (1695-2690 MHz)
- 4 ports / 2 cross pol systems in high band (3300-4200 MHz)
- 2 ports / 1 cross pol system in high band (5150-5925 MHz)
- Fixed tilt
- Clover omni



PRODUCT OVERVIEW	Frequency Range (MHz)	(2x) 1695-2690		(2x) 3300-4200		(1x) 5150-5925
	Array	 Y1	 Y2	 P1	 P2	 O1
	Connector	1-2	3-4	5-6	7-8	9-10
		4 PORTS		4 PORTS		2 PORTS
	Polarization	XPOL		XPOL		XPOL
	Azimuth Beamwidth (avg)	360°		360°		360°
	Electrical Downtilt	5°		5°		0°
	Dimensions	609 x Ø332 mm (24.0 x Ø13.1 in)				

ORDERING OPTIONS

Select from the following ordering options

ANTENNA MODEL NUMBER	CONFIGURATION	MOUNTING HARDWARE	MOUNTING PIPE DIAMETER	SHIPPING WEIGHT
SO-LLYYZ06-F0	Fixed Tilt Omni-Directional Canister	APM40-8	85-170 mm (3.4-6.7 in)	24.5 kg (54 lbs)

360°

609 mm

FIXED TILT

SO-LLYYZ06-F0

ELECTRICAL SPECIFICATIONS

■ Y1 ■ Y2

Frequency Range		MHz	1695-2690				
		MHz	1695-1880	1850-1990	1920-2200	2300-2496	2496-2690
Polarization		---	±45°				
Gain	Over all Tilts	dBi	9.0 ± 0.5	9.1 ± 0.5	9.3 ± 0.5	9.9 ± 0.6	9.9 ± 0.6
	Max Gain	dBi	9.5	9.6	9.8	10.5	10.5
Azimuth Beamwidth (3 dB)		degrees	360°	360°	360°	360°	360°
Elevation Beamwidth (3 dB)		degrees	21° ± 2°	20° ± 2°	18° ± 2°	16° ± 2°	14° ± 1°
Electrical Downtilt		degrees	5°				
Impedance		Ohms	50Ω				
VSWR (Return Loss)		---	1.5:1 (-14 dB)				
Passive Intermodulation		dBc	-153 (3rd Order for 2x20 W Carriers)				
Maximum Effective Power Per Port		Watts	50 W				
First Upper Side Lobe		dB	11	1	11	12	12
Cross Polar Isolation		dB	25	25	25	25	25

Specifications follow BASTA guidelines.

ELECTRICAL SPECIFICATIONS

■ P1 ■ P2

Frequency Range		MHz	3300-4200			
		MHz	3300-3400	3400-3700	3700-4000	4000-4200
Polarization		---	±45°			
Gain	Over all Tilts	dBi	5.8 ± 0.3	6.5 ± 0.5	6.8 ± 0.7	6.8 ± 0.2
	Max Gain	dBi	6.1	7	7.5	7
Azimuth Beamwidth (3 dB)		degrees	360°	360°	360°	360°
Elevation Beamwidth (3 dB)		degrees	45° ± 4°	36° ± 9°	31° ± 8°	32° ± 4°
Electrical Downtilt		degrees	5°			
Impedance		Ohms	50Ω			
VSWR (Return Loss)		---	1.5:1 (-14 dB)			
Passive Intermodulation		dBc	-153 (3rd Order for 2x20 W Carriers)			
Maximum Effective Power Per Port		Watts	50 W			
First Upper Side Lobe		dB	10	10	10	10
Cross Polar Isolation		dB	25	25	25	25

Specifications follow BASTA guidelines.

360°

609 mm

FIXED TILT

SO-LLYYZ06-F0

ELECTRICAL SPECIFICATIONS

■ O1

Frequency Range		MHz	5150-5925
Polarization		---	±45°
Gain	Over all Tilts	dBi	4.8 ± 0.8
	Max Gain	dBi	5.6
Azimuth Beamwidth (3 dB)		degrees	360°
Elevation Beamwidth (3 dB)		degrees	25° ± 5°
Electrical Downtilt		degrees	0°
Impedance		Ohms	50Ω
VSWR (Return Loss)		---	1.4:1 (-15.5)
Passive Intermodulation		dBc	N/A
Maximum Effective Power Per Port		Watts	5 W
First Upper Side Lobe		dB	15
Cross Polar Isolation		dB	25

Specifications follow BASTA guidelines.

ELECTRICAL SPECIFICATIONS

5 GHz FCC Power Requirements

U-NII Band	---	U-NII 1	U-NII 2A	U-NII 2C	U-NII 3
Frequency	MHz	5150-5250	5250-5350	5470-5725	5725-5850
Max Input Power Per Port to Align with FCC Title 47 Part 15	Watts	1.0 W	0.5 W	0.5 W	0.5 W

Specifications follow BASTA guidelines.

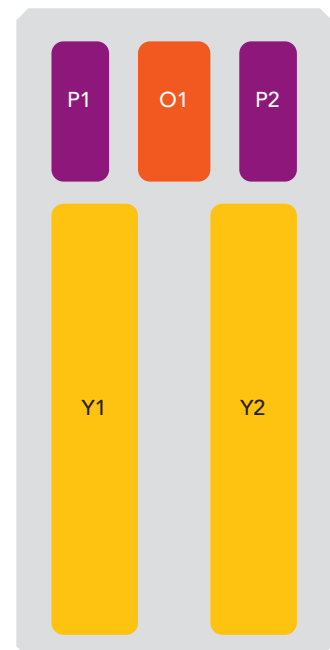
SO-LLYYZ06-F0

BOTTOM VIEW - LABELING



ARRAY LAYOUT

ARRAY	FREQUENCY	CONNECTOR	CONNECTOR TYPE
Y1	1695-2690 MHz	1-2	(2x) 4.3-10 Long Neck Female
Y2	1695-2690 MHz	3-4	(2x) 4.3-10 Long Neck Female
P1	3300-4200 MHz	5-6	(2x) 4.3-10 Long Neck Female
P2	3300-4200 MHz	7-8	(2x) 4.3-10 Long Neck Female
O1	5150-5925 MHz	9-10	(2x) 4.3-10 Long Neck Female



The illustration is not shown to scale.

360°

609 mm

FIXED TILT

SO-LLYYZ06-F0

MECHANICAL SPECIFICATIONS

Length		mm (in)	609 (24.0)
Diameter		mm (in)	332 (13.1)
Net Weight - Antenna Only		kg (lbs)	10.8 (23.8)
Net Weight - Mounting Hardware Only		kg (lbs)	10.5 (23.1)
Wind Load Rated at 150 km/h (93 mph)	Front	N (lbf)	170 (38)
	Side	N (lbf)	170 (38)
	Rear	N (lbf)	170 (38)
Survival Wind Speed / Rated Wind Speed		km/h (mph)	240 (150)
Connector Type		--	(10x) 4.3-10 Long Neck Female at Bottom
Radome Color		---	Light Grey RAL7035
Radome Material		---	ASA
Lightning Protection		---	Direct Ground
Shipping	Packing Size (Length x Width x Depth)	mm (in)	1000 x 430 x 435 (39.4 x 16.9 x 17.1)
	Shipping Weight	kg (lbs)	24.5 (54)

ENVIRONMENTAL SPECIFICATIONS

Environmental Standard	---	ETS 300 019
Operating Temperature	degrees	-40° to +60° C (-40° to +140° F)
Product Environmental Compliance	---	Product is RoHS Compliant

SO-LLYYZ06-F0


ACCESSORIES

Accessories may be ordered separately unless otherwise indicated.

ITEM	WEIGHT
Mounting Hardware APM40-8 fits pipe diameter 85-170 mm (3.4-6.7 in)	10.5 kg (23.1 lbs)

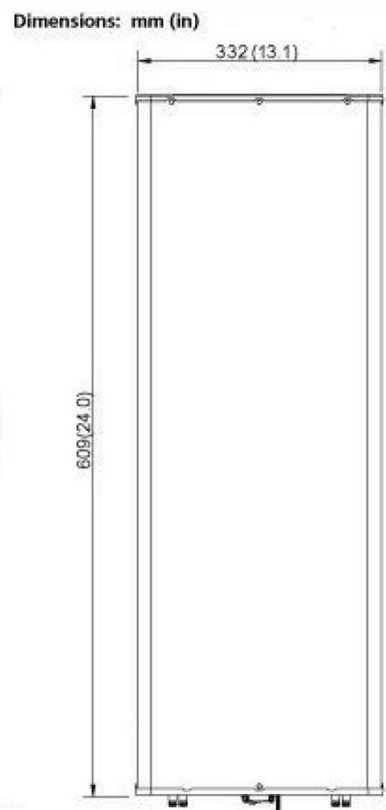
INSTALLATION

Please read all installation notes before installing product.

	Always attach the antenna using all mounting points.
	Do not install antenna with the connectors facing upwards.

EXTERNAL DOCUMENT LINKS

[APM40 Series Installation Instructions](#)



This drawing is a general representation of the antenna – it does NOT accurately depict the connectors or radome shape.

NOTES

Specifications follow BASTA guidelines.
For additional mounting information, please check External Document Links .
For Radiating Patterns: Request pattern files