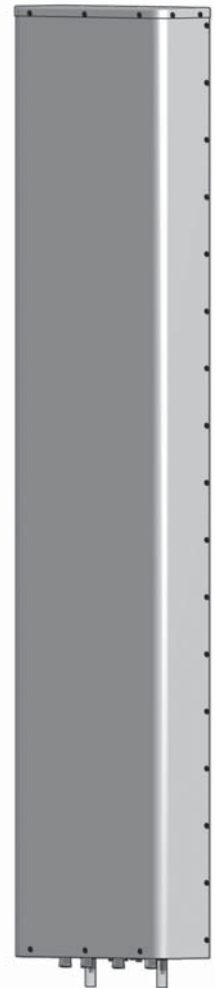


QUAD858C0000x

Twin Band | Quad Port | Panel Antenna | (2x) X-Pol | 85° / 85° | 15.0 / 15.0 dBi | Variable Tilt


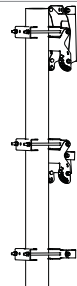
- Twin band, quad-port panel antenna with variable electrical tilt
- 4x4 MIMO
- Patented internal RET actuator adds no additional length to the antenna

Ordering Options		Model Number	
When ordering, replace “x” in the model number with one of the options listed below.			
Manual Electrical Tilt		QUAD858C0000M	
Remote Electrical Tilt AISG v2.0 / 3GPP with an MDCU RET Actuator		QUAD858C0000G	
Remote Electrical Tilt AISG v2.0 / 3GPP with an MDDU RET Actuator		QUAD858C0000L	
Mounting bracket kits and other accessories are ordered separately.			
Electrical Characteristics		(2x) 696-900 MHz	
Frequency Bands		696-806 MHz	806-900 MHz
Polarization		(2x) ±45° (Quad-Pol)	
Horizontal Beamwidth		86°	80°
Vertical Beamwidth		9.2°	7.9°
Gain		14.5 dBi	15.0 dBi
Electrical Downtilt		0-10°	
Impedance		50Ω	
VSWR		≤ 1.5:1	
Upper Sidelobe Suppression		> 16 dB	> 16 dB
Front-to-Back Ratio		> 25 dB	> 25 dB
Isolation Between Ports (intra-band)		> 25 dB	
IM3 (2x20W carrier)		-150 dBc	
Input Power		(4x) 500 W	
Total Number of Connectors		Antennas has 4 connectors located at the bottom	
Connectors Per Band	696-900 MHz	(2x) 7/16-DIN Female	
	696-900 MHz	(2x) 7/16-DIN Female	
Diplexed		No	
Lightning Protection		Direct Ground	
Operating Temperature		-40° to +60° C (-40° to +140° F)	
Mechanical Characteristics			
Dimensions (Length x Width x Depth)		2410 x 525 x 183 mm	94.9 x 20.7 x 7.2 in
Depth with Z-Brackets		230 mm	9.0 in
Weight without Mounting Brackets: MET		31.0 kg	68.3 lbs
Weight without Mounting Brackets: RET		31.3 kg	69.0 lbs
Survival Wind Speed		> 201 km/hr	> 125 mph
Wind Area	Front	1.27 m²	13.6 ft²
	Side	0.44 m²	4.8 ft²
Wind Loads (160 km/hr or 100 mph)	Front	1697 N	381 lbf
	Side	539 N	121 lbf



QUAD858C0000x

Twin Band | Quad Port | Panel Antenna | (2x) X-Pol | 85° / 85° | 15.0 / 15.0 dBi | Variable Tilt

Electrical Downtilt Control				
Electrical downtilt for each band can be controlled separately. Tilt indicator(s) are covered by removable transparent cap(s).				
Manual Electrical Tilt (MET) Control	A colored knob at the end of the tilt indicator allows change of the tilt without need of a tool. The knob color is identical to the corresponding connector ring color. To access the knob, remove the cap by turning it counter-clockwise. It is re-installed by opposite rotation. Do not remove the transparent cap(s) from the antenna.			
Remote Electrical Tilt (RET) Control	The remote control of the electrical tilt is managed by either a Multi-Device Control Unit (MDCU) or a Multi-Device Dual Unit (MDDU) inserted in the bottom of the antenna. A single actuator individually controls the tilt of each band (no need for daisy chain cables between the bands). This module does not add any additional length to the antenna. For RET control, the transparent caps must be in place and locked. The tilt angle indicators always remain visible and the antenna still has manual tilt control (manual override).			
RET Actuator	Select one of the following RET actuators when ordering this antenna.			
	Multi-Device Control Unit (MDCU)	The MDCU is an electronic module that allows the remote control of the electrical downtilt (RET) in Amphenol antennas with factory embedded motors. The MDCU is factory installed. Refer to ordering options.		
	Multi-Device Dual Unit (MDDU)	The MDDU allows two separate RET Controllers to independently drive the RETs in Amphenol antennas with factory installed motors (for antenna sharing). The MDDU is factory installed. Refer to ordering options.		
Important Installation Instructions		In order to operate RET control, the transparent caps covering the tilt adjustment indicators must be engaged and locked. Do not cut them from the antenna.		
		Do not install the antenna with the connectors facing upward.		
Mounting Options	Part Number	Image	Fits Pipe Diameter	Weight
All mounting bracket kits are ordered separately unless otherwise indicated. Select from the options listed below.				
3-Point Mounting and Downtilt Bracket Kit	36210008		40-115 mm 1.6-4.5 in	6.9 kg 15.2 lbs

QUAD858C0000x

Twin Band | Quad Port | Panel Antenna | (2x) X-Pol | 85° / 85° | 15.0 / 15.0 dBi | Variable Tilt

Bottom View of Antenna



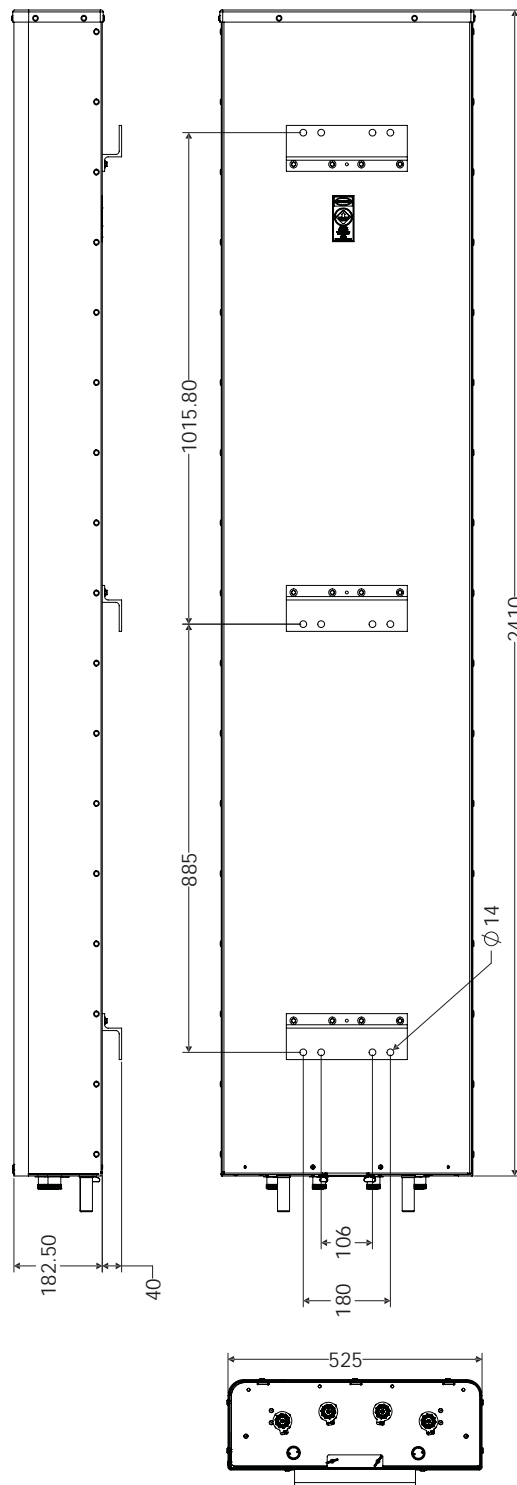
Location of the MDCU or MDDU for RET Control (MDCU shown)

Tilt indicators covered by transparent caps.
Manual adjustment is accessed by removing the caps.
Knob colors are the same as the connectors.



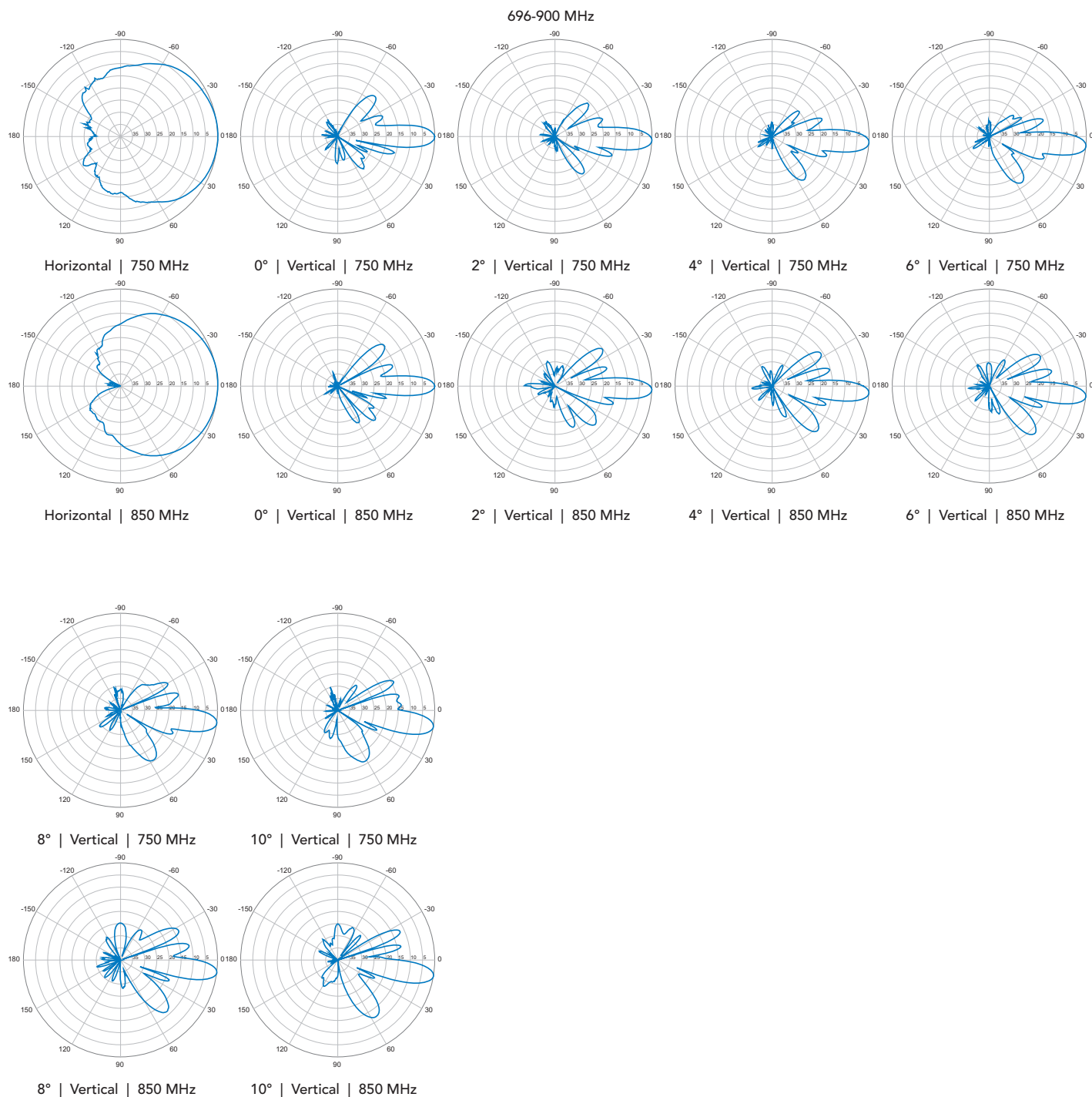
In order to operate RET control, the transparent caps covering the tilt adjustment indicators must be engaged and locked. Do not cut them from the antenna.

Dimensions (mm)



QUAD858C0000x

Twin Band | Quad Port | Panel Antenna | (2x) X-Pol | 85° / 85° | 15.0 / 15.0 dBi | Variable Tilt



Quoted performance parameters are provided to offer typical, peak or range values only and may vary as a result of normal testing, manufacturing and operational conditions. Extreme operational conditions and/or stress on structural supports is beyond our control. Such conditions may result in damage to this product. Improvements to products may be made without notice.