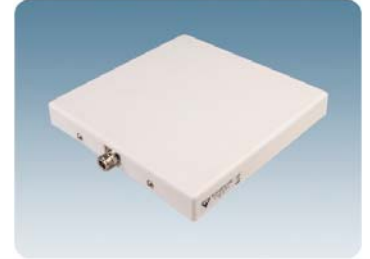


## PLPI-UMTS-2100

1-Band | 1-Port | Patch Antenna | Linear Polarization | 60° | 2110-2170 MHz | 6-9 dBi | SISO | Indoor

### Indoor linearly polarized Patch Antenna for mounting on Wall or Ceiling

- Low-profile antenna for the UMTS 2100 band
- A linearly polarized patch antenna for indoor use
- The antenna is carefully sealed with a discreet white cover
- The connector is placed at one side to enable mounting close to a wall or ceiling



This model is available in the iBwave In-Building Network Components Database - [www.ibwavecomponents.com](http://www.ibwavecomponents.com)

Ordering Options			
Type	Connector Location	Frequency Range	Product Number
PLPI-UMTS-2100	Side Connector	2110-2170 MHz	100000323
Electrical Characteristics			
Frequency Range	2110-2170 MHz		
Polarization	Linear		
Half Power Beamwidth - H-Plane	Approx. 60°		
Half Power Beamwidth - E-Plane	Approx. 60°		
Gain	6-9 dBi		
Bandwidth	≥ 80 MHz @ SWR ≤ 2.0		
Impedance	Nom. 50Ω		
SWR	≤ 1.5 f.res.		
Intermodulation	Not Rated		
Maximum Input Power	25 Watts		
Connector	N-Type Female		
Mechanical Characteristics			
Dimensions (approximate)	Length: 204 mm (8.0 in) Width: 204 mm (8.0 in) Height: 28 mm (1.1 in)		
Weight (approximate)	0.4 kg (0.9 lbs)		
Colour	Marine White		
Materials	Cover	PS	
	Chassis	Aluminium	
Mounting	For mounting on wall or ceiling. Ø4.5 x 20 mm (0.2 x 0.8 in). Four holes.		

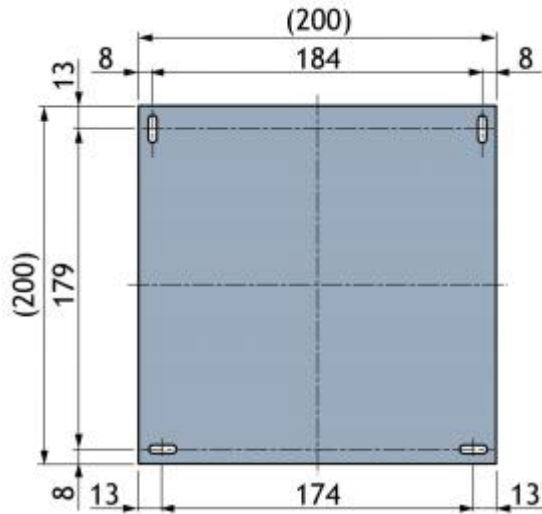
Quoted performance parameters are provided to offer typical, peak or range values only and may vary as a result of normal testing, manufacturing and operational conditions. Extreme operational conditions and/or stress on structural supports is beyond our control. Such conditions may result in damage to this product. Improvements to products may be made without notice.

## PLPI-UMTS-2100

1-Band | 1-Port | Patch Antenna | Linear Polarization | 60° | 2110-2170 MHz | 6-9 dBi | SISO | Indoor

### MOUNTING DETAILS

Dimensions excluding cover



### TYPICAL GAIN and SWR CURVES

