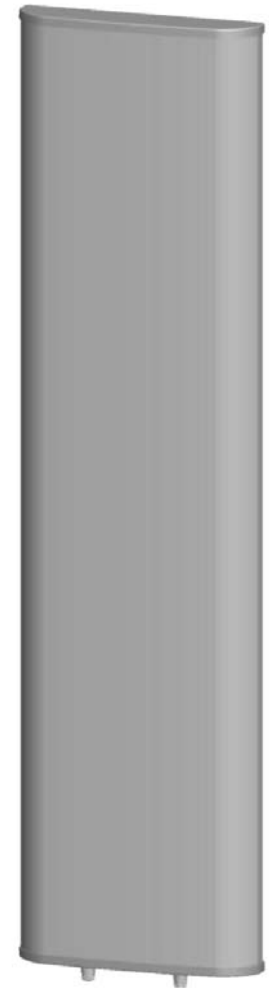


P6833102

Single Band | Panel | X-Pol | 34° | 21.0 dBi | Variable Tilt

Ordering Options		
When ordering, replace "x" in the model number with one of the options listed below.		
Manual Electrical Tilt	P6833102	
Remote Electrical Tilt	P6833102G	
Electrical Characteristics		
Frequency Bands (MHz)	870-960 MHz	
Polarization	±45°	
Horizontal Beamwidth	34°	
Vertical Beamwidth	8.3°	
Gain	21.0 dBi	
Electrical Downtilt	0-8°	
Impedance	50Ω	
VSWR	< 1.4	
Upper Sidelobe Suppression	> 20 dB	
Front-to-Back Ratio	> 35 dB	
Isolation Between Ports	≥ 30 dB	
IM3 (2x43 dBm carrier)	≤ -150 dBc	
Input Power	500 W	
Cross Polar Ratio	Main Direction (0°)	> 22 dB
	Sector Edges (±15°)	> 10 dB
Operating Temperature	-40° to 70° C (-40° to 158° F)	
Lightning Protection	DC Ground	
Connector(s)	2 / 7/16-DIN Female / Bottom	
Mechanical Characteristics		
Radome Material/Color	UPVC / Gray	
Dimensions (Height x Width x Depth)	2530 x 515 x 100 mm	99.6 x 20.3 x 3.9 in
Weight without Mounting Brackets	32.5 kg	71.7 lbs
Packing Dimensions (H x W x D)	2800 x 610 x 210 mm	110.2 x 24.0 x 8.3 in
Survival Wind Speed	216 km/hr	134 mph
Mounting Options		
	Attach to Pipe Diameter	
Mounting & Downtilt Bracket Kit Included	50-115 mm	2.0-4.5 in
Mechanical Tilt	0°-15°	

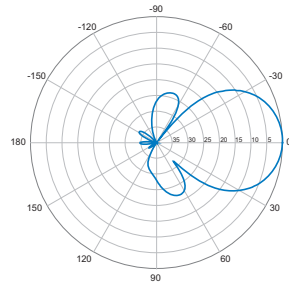


Quoted performance parameters are provided to offer typical, peak or range values only and may vary as a result of normal testing, manufacturing and operational conditions. Extreme operational conditions and/or stress on structural supports is beyond our control. Such conditions may result in damage to this product. Improvements to products may be made without notice.

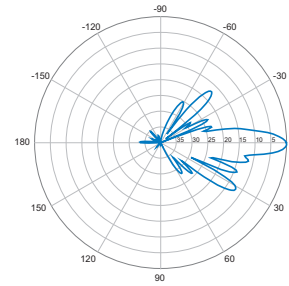
P6833102

Single Band | Panel | X-Pol | 34° | 21.0 dBi | Variable Tilt

870-960 MHz



Horizontal



0° | Vertical