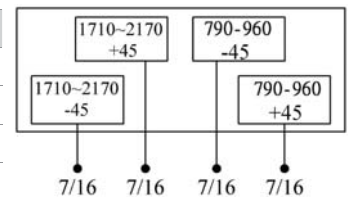
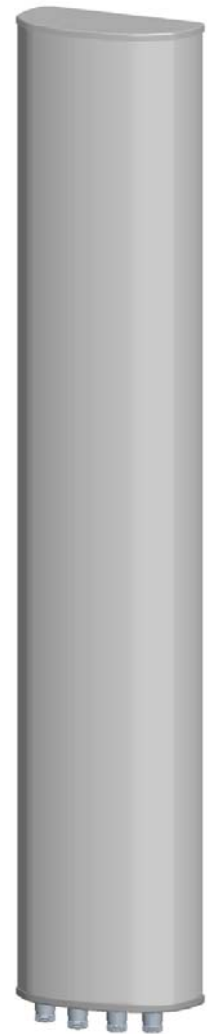


P6829202

Dual Band | Panel | XX-Pol | 65° / 65° | 14.7 / 17.0 dBi | Variable Tilt

- Dual band, XX-Pol, variable tilt, panel antenna
- Continuously adjustable downtilt 0-14°/0-8°
- Manual (MET) or Remote (RET) electrical tilt options
- Mounting and downtilt brackets included

Ordering Options				
When ordering, replace "x" in the model number with one of the options listed below.				
Manual Electrical Tilt	P6829202			
Remote Electrical Tilt (external RCUK20)	P6829202G			
Electrical Characteristics	790-960 MHz		1710-2170 MHz	
Frequency Bands (MHz)	790-896	870-960	1710-1880	1920-2170
Polarization	±45°		±45°	
Horizontal Beamwidth	67°	65°	65°	61°
Vertical Beamwidth	13°	12°	7°	6.7°
Gain	14.3 dBi	14.7 dBi	17.0 dBi	17.0 dBi
Electrical Downtilt	0-14°		0-8°	
Impedance	50Ω			
VSWR	≤ 1.5		≤ 1.5	
Upper Sidelobe Suppression	> 15 dB	> 15 dB	> 15 dB	> 15 dB
Front-to-Back Ratio	≥ 25 dB		≥ 25 dB	
Isolation	≥ 30 dB		≥ 30 dB	
IM3 (2x43 dBm carrier)	≤ -150 dBc			
Cross Polar Ratio	Main Direction	20 dB	20 dB	20 dB
	Sector Edges	10 dB	10 dB	10 dB
Squint	0-2	0-2	0-2	0-2
Input Power (at 50° C ambient temperature)	400 W		200 W	
Operating Temperature	-40° to +60° C (-40° to +140° F)			
Lightning Protection	DC Ground			
Connector(s)	4 / 7/16-DIN Female / Bottom			
Mechanical Characteristics				
Radome Material/Color	Fiberglass / Grey			
Reflector Material	Aluminum			
Radiating Element Material	Aluminum			
Dimensions (Height x Width x Depth)	1600 x 270 x 137 mm		63.0 x 10.6 x 5.4 in	
Weight without Mounting Brackets	19 kg		41.9 lbs	
Packing Dimensions (H x W x D)	1870 x 330 x 220 mm		73.6 x 13.0 x 8.7 in	
Survival Wind Speed	216 km/hr		134 mph	
Wind Loads (150 km/hr or 93 mph)	Front	394 N	88.6 lbf	
	Side	279 N	62.7 lbf	
	Rear	416 N	93.5 lbf	
Mounting Options				
Attach to Pipe Diameter				
Mounting & Downtilt Bracket Kit Included	Ø50-Ø115 mm		Ø2.0-Ø4.5 in	
Mechanical Tilt Range	0-10°			



Quoted performance parameters are provided to offer typical, peak or range values only and may vary as a result of normal testing, manufacturing and operational conditions. Extreme operational conditions and/or stress on structural supports is beyond our control. Such conditions may result in damage to this product. Improvements to products may be made without notice.