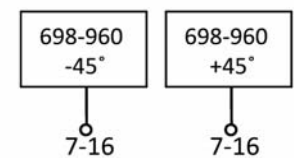
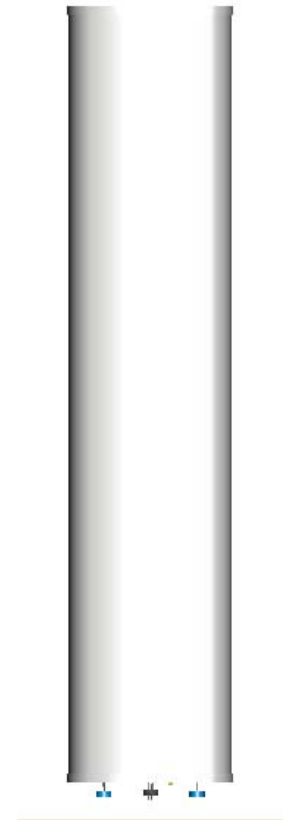


P6816300

Single Band | Panel | X-Pol | 65° | 14.3 dBi | Variable Electrical Tilt

- Single band, X-Pol, variable tilt, panel antenna
- Continuously adjustable downtilt 0°-15°
- Manual (MET) or Remote (RET) electrical tilt options
- Mounting and downtilt brackets included

| Ordering Options | Model Number | |
|--------------------------------------|--------------------------------------|-------------------------------|
| Manual Electrical Tilt | P6816300 | |
| Remote Electrical Tilt | P6816300G | |
| Electrical Characteristics | | |
| Frequency Bands | 698-806 MHz | 806-960 MHz |
| Polarization | ±45° | |
| Horizontal Beamwidth (±6°) | 65° | 64° |
| Vertical Beamwidth | 15° | 13° |
| Gain (±0.5 dB) | 13.8 dBi | 14.3 dBi |
| Electrical Downtilt | 0°-15° | |
| Impedance | 50Ω | |
| VSWR | ≤ 1.5 | |
| Upper Sidelobe Suppression (dB) | 0°...7°...15° 15...15...15 | 0°...7°...15° 15...15...15 |
| Front-to-Back Ratio (180° ±30°) | ≥ 25 dB | ≥ 25 dB |
| Isolation | ≥ 30 dB | |
| IM3 (2x43 dBm carrier) | ≤ -150 dBc | |
| Input Power | 500 W | |
| Lightning Protection | DC Ground | |
| Operating Temperature | -40° to 65° C | -40° to 149° F |
| Connector(s) | 2 Ports / 7-16 DIN / Female / Bottom | |
| Mechanical Characteristics | | |
| Radome Material | Fiberglass, Grey | |
| Dimensions (Height x Width x Depth) | 1460 x 315 x 145 mm | 57.5 x 12.4 x 5.7 in |
| IP Rating | RF Connectors | IP67 |
| | Antenna | IP55 |
| Weight without Mounting Brackets | 15 kg | 33.1 lbs |
| Packing Dimensions (HxWxD) | 1740 x 415 x 240 mm | 68.5 x 16.3 x 9.4 in |
| Packing Weight | 24 kg | 52.9 lbs |
| Survival Wind Speed | 200 km/hr | 124 mph |
| Wind Loads (200 km/hr or 124 mph) | 660 N | 148.4 lbf |
| Mounting Options | Fits Pipe Diameter | Weight |
| Mounting and Downtilt Kit (included) | Ø50-Ø115mm Ø2.0-Ø4.5 in | 4.5 kg 10 lbs |
| Mounting Kit Tilt Range | 0-10° | |



Quoted performance parameters are provided to offer typical or range values only and may vary as a result of normal manufacturing and operational conditions. Extreme operational conditions and/or stress on structural supports is beyond our control. Such conditions may result in damage to this product. Improvements to product may be made without notice.