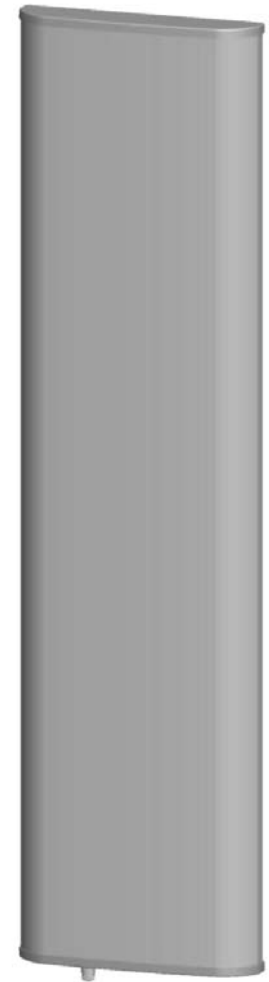


## P6733200

Single Band | Panel | V-Pol | 34° | 21.0 dBi | Variable Tilt

Ordering Options		
Manual Electrical Tilt	P6733200	
Remote Electrical Tilt	P6733200G	
Electrical Characteristics		
Frequency Bands (MHz)	880-960 MHz	
Polarization	Vertical	
Horizontal Beamwidth	34°	
Vertical Beamwidth	8.3°	
Gain	21.0 dBi	
Electrical Downtilt	0-8°	
Impedance	50Ω	
VSWR	< 1.4	
Upper Sidelobe Suppression (dB)	> 20 dB	
Front-to-Back Ratio	≥ 27 dB	
IM3 (2x43 dBm carrier)	≤ -150 dBc	
Cross Polar Ratio	Main Direction (0°)	22 dB
	Sector Edges (±15°)	10 dB
Input Power	500 W	
Operating Temperature	-40° to 60° C (-40° to 140° F)	
Lightning Protection	DC Ground	
Connector(s)	1 / 7/16-DIN Female / Bottom	
Mechanical Characteristics		
Radome Material/Color	UPVC / Gray	
Dimensions (Height x Width x Depth)	2530 x 515 x 100 mm	99.6 x 20.3 x 3.9 in
Weight without Mounting Brackets	32 kg	70.5 lbs
Packing Dimensions (H x W x D)	2800 x 610 x 210 mm	110.2 x 24.0 x 8.3 in
Survival Wind Speed	216 km/hr	134 mph
Mounting Options		
	Attach to Pipe Diameter	
Mounting & Downtilt Bracket Kit Included	50-115 mm	2.0-4.5 in
Mechanical Tilt	0°-15°	

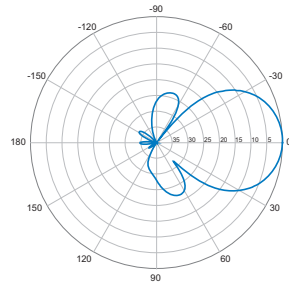


Quoted performance parameters are provided to offer typical or range values only and may vary as a result of normal manufacturing and operational conditions. Extreme operational conditions and/or stress on structural supports is beyond our control. Such conditions may result in damage to this product. Improvements to product may be made without notice.

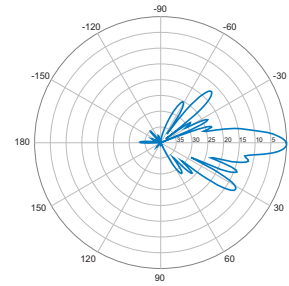
# P6733200

Single Band | Panel | V-Pol | 34° | 21.0 dBi | Variable Tilt

880-960 MHz



Horizontal



0° | Vertical

Quoted performance parameters are provided to offer typical, peak or range values only and may vary as a result of normal testing, manufacturing and operational conditions. Extreme operational conditions and/or stress on structural supports is beyond our control. Such conditions may result in damage to this product. Improvements to products may be made without notice.