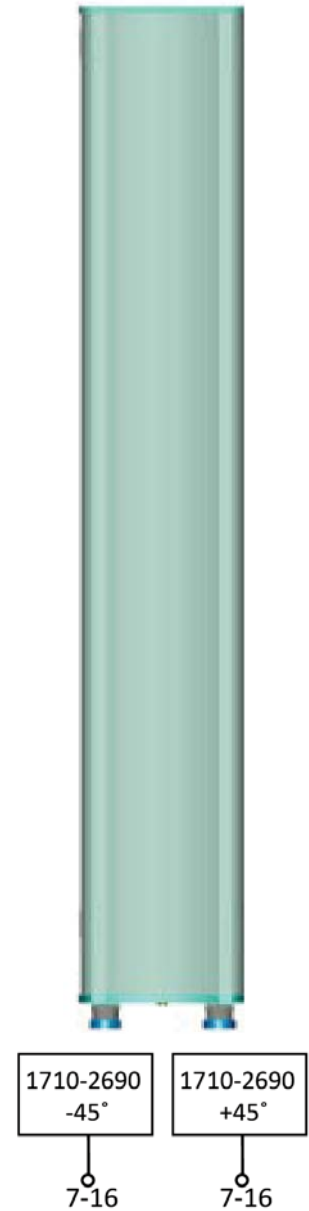


P6176100

Single Band | Panel | X-Pol | 65° | 17.5 dBi | Variable Tilt

- Single band, X-Pol, variable tilt, panel antenna
- Continuously adjustable downtilt 0°-10°
- Manual (MET) or Remote (RET) electrical tilt options
- Mounting and downtilt brackets included

Ordering Options			
Manual Electrical Tilt	P6176100		
Remote Electrical Tilt	P6176100G		
Electrical Characteristics	1710-2690 MHz		
Frequency Bands	1710-2200 MHz	2200-2490 MHz	2490-2690 MHz
Polarization	±45°		
Horizontal Beamwidth (±6°)	67°	65°	63°
Vertical Beamwidth (±1°)	7°	6°	5.5°
Gain (± 0.5 dBi)	17 dBi	17.2 dBi	17.5 dBi
Electrical Downtilt	0-10°		
Impedance	50Ω		
VSWR	≤ 1.5		
Upper Sidelobe Suppression (dB)	0°...5°...10° 16...15...15	0°...5°...10° 16...15...14	0°...5°...10° 16...15...14
Front-to-Back Ratio	≥ 25 dB		
Isolation	≥ 28 dB		
IM3 (2x43 dBm carrier)	≤ -150 dBc		
Input Power	250 W		
Operating Temperature	-40° to +65° C (-40° to +149° F)		
Lightning Protection	DC Ground		
Connector(s)	2 / 7/16-DIN Female / Bottom		
Mechanical Characteristics			
Radome Material/Color	UPVC		
Dimensions (Height x Width x Depth)	1372 x 160 x 100 mm	54.0 x 6.3 x 3.9 in	
Weight without Mounting Brackets	10.8 kg	23.8 lbs	
Packing Dimensions (H x W x D)	1475 x 240 x 218 mm	58.1 x 9.4 x 8.6 in	
Packing Weight	12.8 kg	28.2 lbs	
Survival Wind Speed	200 km/h	124 mph	
Wind Load (200 km/h or 124 mph)	350 N	78.7 lbf	
Mounting Options			
Mounting & Downtilt Bracket Kit Included	Attach to Pipe Diameter		
	Ø50-Ø115 mm	Ø2.0-Ø4.5 in	



Quoted performance parameters are provided to offer typical, peak or range values only and may vary as a result of normal testing, manufacturing and operational conditions. Extreme operational conditions and/or stress on structural supports is beyond our control. Such conditions may result in damage to this product. Improvements to products may be made without notice.