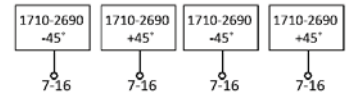
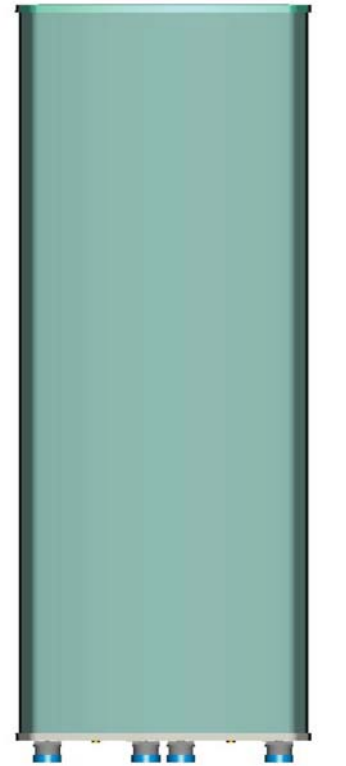


## P6175100

Twin Band | Panel | (2x) X-Pol | 65° / 65° | 15.0 / 15.0 dBi | Variable Tilt

- Twin band, (2x) X-Pol, variable tilt, panel antenna
- Continuously adjustable downtilt 0-10°/0-10°
- Manual (MET) or Remote (RET) electrical tilt options
- Mounting and downtilt brackets included

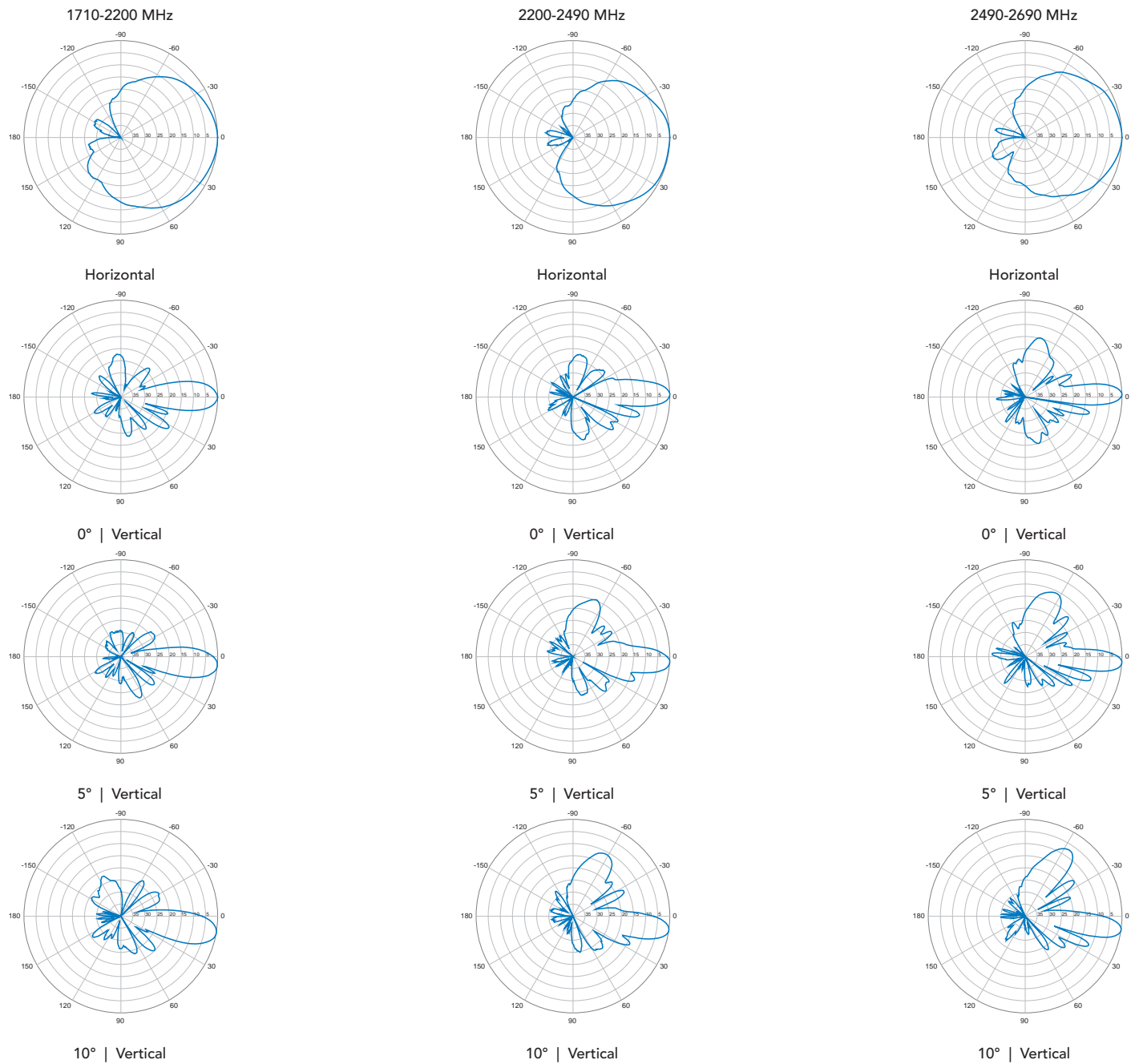
Ordering Options			
When ordering, replace "x" in the model number with one of the options listed below.			
Manual Electrical Tilt	P6175100		
Remote Electrical Tilt (External)	P6175100G		
Electrical Characteristics		(2x) 1710-2690 MHz	
Frequency Bands	1710-2200 MHz	2200-2490 MHz	2490-2690 MHz
Polarization	(2x) ±45°		
Horizontal Beamwidth (±6°)	67°	65°	63°
Vertical Beamwidth	13° (±2°)	10.5° (±1°)	10° (±1°)
Gain (±0.5 dB)	14.5 dBi	15 dBi	15 dBi
Electrical Downtilt	0-10°		
Impedance	50Ω		
VSWR	≤ 1.5		
Upper Sidelobe Suppression (dB)	0°...5°...10° 16...16...15	0°...5°...10° 15...16...14	0°...5°...10° 15...16...14
Front-to-Back Ratio	≥ 25 dB		
Isolation	≥ 28 dB		
IM3 (2x43 dBm carrier)	≤ -150 dBc		
Input Power (at 50° C ambient temperature)	(4x) 250 W		
Operating Temperature	-40° to +65° C (-40° to +149° F)		
Lightning Protection	DC Ground		
Connector(s)	4 / 7/16-DIN Female / Bottom		
Mechanical Characteristics			
Radome Material	UPVC		
Dimensions (Height x Width x Depth)	786 x 320 x 100 mm	30.9 x 12.6 x 3.9 in	
Weight without Mounting Brackets	14.6 kg	32.1 lbs	
Packing Dimensions (H x W x D)	900 x 415 x 205 mm	35.4 x 16.3 x 8.1 in	
Packing Weight	16.4 kg	36.2 lbs	
Survival Wind Speed	200 km/h	124 mph	
Wind Load (200 km/h or 124 mph)	320 N	71.9 lbf	
Mounting Options		Attach to Pipe Diameter	
Mounting & Downtilt Bracket Kit Included	Ø50-Ø115 mm	Ø2.0-Ø4.5 in	



Quoted performance parameters are provided to offer typical, peak or range values only and may vary as a result of normal testing, manufacturing and operational conditions. Extreme operational conditions and/or stress on structural supports is beyond our control. Such conditions may result in damage to this product. Improvements to products may be made without notice.

P6175100

Twin Band | Panel | 2x X-Pol | 65° / 65° | 15.0 / 15.0 dBi | Variable Tilt



Quoted performance parameters are provided to offer typical, peak or range values only and may vary as a result of normal testing, manufacturing and operational conditions. Extreme operational conditions and/or stress on structural supports is beyond our control. Such conditions may result in damage to this product. Improvements to products may be made without notice.