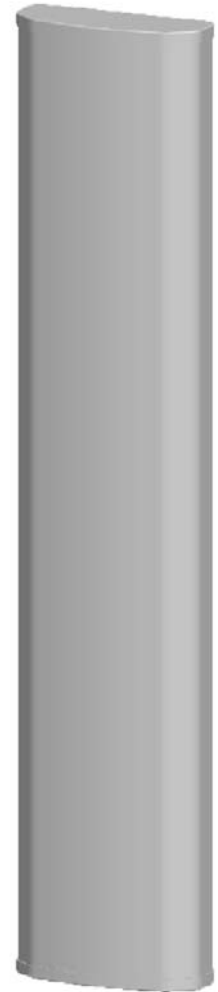


P5878200

Tri Band | VET Panel | XXX-Pol | 65° / 62° / 62° | 15.5 / 15.8 / 16.0 dBi | Variable Tilt

- Tri Band Antenna, dual polarization, 6 connectors
- Independent tilt on each band, 0°-10° / 0°-10° / 0-10°
- MET and RET versions
- Mounting and downtilt brackets included



| Ordering Options | | Model Number | | | | | | | |
|---|---------------|--------------------------------------|----------|-------------------------------|---------------|----------------------|-------------------------------|---------------|-----------|
| Manual Electrical Tilt | | P5876200 | | | | | | | |
| Remote Electrical Tilt | | P5876200G | | | | | | | |
| Electrical Characteristics | | 790-960 MHz | | | 1710-2170 MHz | | | 1710-2170 MHz | |
| Frequency Bands (MHz) | | 790-896 | 870-960 | 1710-1880 | 1850-1990 | 1920-2170 | 1710-1880 | 1850-1990 | 1920-2170 |
| Polarization | | ±45° | | | ±45° | | | ±45° | |
| Horizontal Beamwidth | | 65° | 65° | 62° | 61° | 62° | 62° | 61° | 62° |
| Vertical Beamwidth | | 10.5° | 10° | 9.5° | 8.5° | 8° | 9.5° | 8.5° | 8° |
| Gain | | 15.3 dBi | 15.5 dBi | 15.5 dBi | 15.8 dBi | 15.8 dBi | 15.7 dBi | 16.0 dBi | 16.0 dBi |
| Electrical Downtilt | | 0-10° | | | 0-10° | | | 0-10° | |
| Impedance | | 50Ω | | | | | | | |
| VSWR | | ≤ 1.5 | | | | | | | |
| Upper Sidelobe Suppression | | 0°...5°...10° 15...16...15 | | 0°...5°...10° 15...16...15 | | | 0°...5°...10° 15...16...15 | | |
| Front-to-Back Ratio (dB) | | ≥ 25 dB | | | ≥ 25 dB | | | ≥ 25 dB | |
| Isolation | | ≥ 28 dB | | | ≥ 28 dB | | | ≥ 28 dB | |
| IM3 (2x43 dBm carrier) | | ≤ -150 dBc | | | | | | | |
| Maximum Input Power | | 300 W | | 300 W | | | 300 W | | |
| Connectors Per Band | 790-960 MHz | 2 ports / 7/16 - DIN Female / Bottom | | | | | | | |
| | 1710-2170 MHz | 2 ports / 7/16 - DIN Female / Bottom | | | | | | | |
| | 1710-2170 MHz | 2 ports / 7/16 - DIN Female / Bottom | | | | | | | |
| Operating Temperature Range | | -40° to +60° C (-40° to 140° F) | | | | | | | |
| Lightning Protection | | DC Ground | | | | | | | |
| Mechanical Characteristics | | | | | | | | | |
| Radome Material / Color | | Fiberglass / Grey | | | | | | | |
| Dimensions (Height x Width x Diameter) | | 2170 x 305 x 145 mm | | | | 85.4 x 12.0 x 5.7 in | | | |
| Weight without Mounting Brackets | | 24 kg | | | | 52.9 lbs | | | |
| Packing Dimensions (HxWxD) | | 2470 x 380 x 230 mm | | | | 97.2 x 15.0 x 9.1 in | | | |
| Survival Wind Speed | | 216 km/hr | | | | 134 mph | | | |
| Mounting Options | | Attach to Pole Diameter | | | | | | | |
| Mounting and Downtilt Brackets (included) | | Ø50-Ø110 mm | | | | Ø2.0-Ø4.3 in | | | |
| Tilt Range | | 0-10° | | | | | | | |

Quoted performance parameters are provided to offer typical, peak or range values only and may vary as a result of normal testing, manufacturing and operational conditions. Extreme operational conditions and/or stress on structural supports is beyond our control. Such conditions may result in damage to this product. Improvements to products may be made without notice.