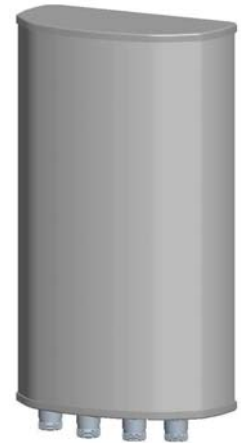


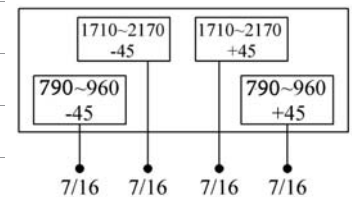
P5827200

Dual Band | Panel Antenna | XX-Pol | 65° / 65° | 12.0 / 14.5 dBi | Fixed Tilt

- Dual band, XX-Pol, fixed tilt, panel antenna
- Mounting and downtilt brackets included



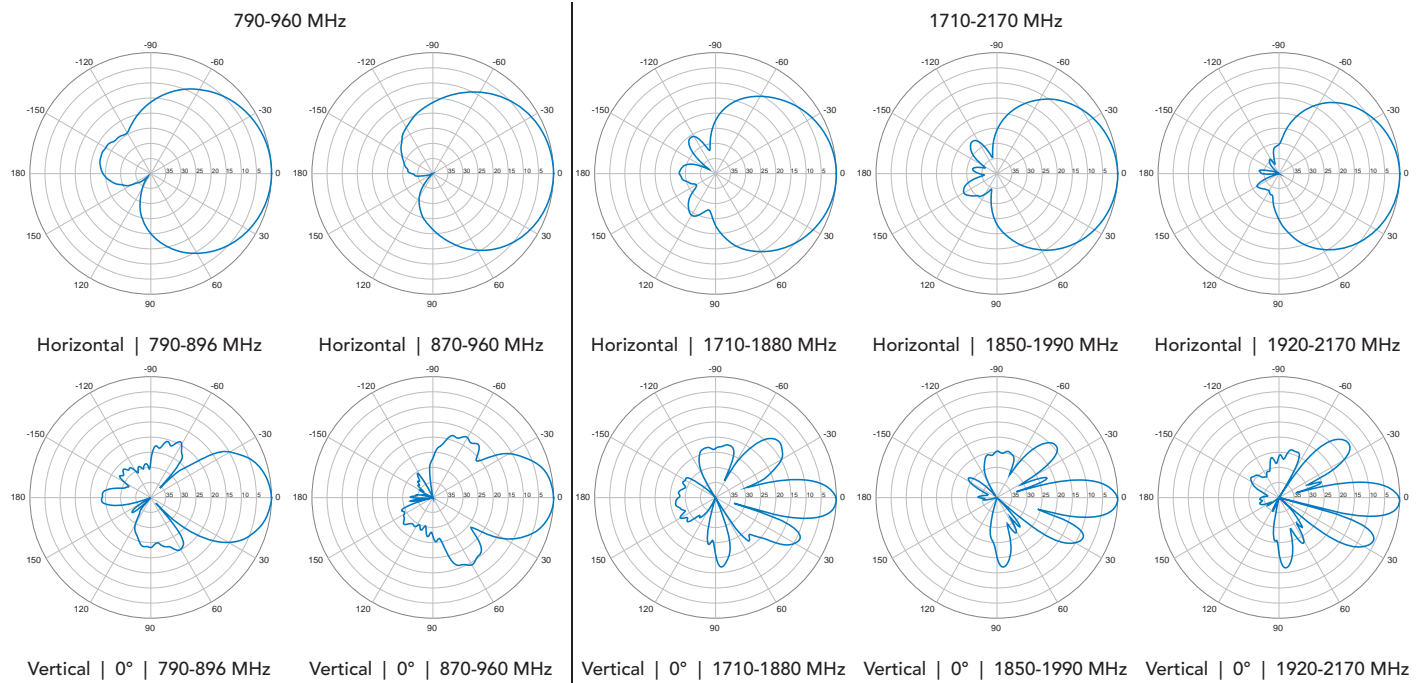
Electrical Characteristics		790-960 MHz		1710-2170 MHz		
Frequency Bands (MHz)		790-896	870-960	1710-1880	1850-1990	1920-2170
Polarization		±45°		±45°		
Horizontal Beamwidth		68°	65°	65°	64°	62°
Vertical Beamwidth		33°	30°	15°	14°	13°
Gain		11.5 dBi	12.0 dBi	14.0 dBi	14.0 dBi	14.5 dBi
Electrical Downtilt		0°		0°		
Impedance		50Ω				
VSWR		≤ 1.5		≤ 1.5		
Sidelobe Suppression		≥ 13 dB		≥ 15 dB		
Front-to-Back Ratio		≥ 25 dB		≥ 25 dB		
Isolation		≥ 30 dB		≥ 30 dB		
IM3 (2x43dBm carrier)		≤ -150 dBc				
Input Power		400 W		200 W		
Total Number of Connectors		Antennas has 2 connectors located on the bottom of antenna				
Connectors Per Band, Type, Location	790-960 MHz	2 Connectors / 7/16-DIN Female / Bottom				
	1710-2170 MHz	2 Connectors / 7/16-DIN Female / Bottom				
Lightning Protection		DC Ground				
Operating Temperature		-40° to +60° C (-40° to +140° F)				
Mechanical Characteristics						
Radome Material / Color		UPVC / Gray				
Dimensions (Length x Width x Depth)		650 x 270 x 137 mm		25.6 x 10.6 x 5.4 in		
Weight without Mounting Brackets		9.5 kg		20.9 lbs		
Packing Dimensions (LxWxD)		740 x 330 x 220 mm		29.1 x 13.0 x 8.7 in		
Survival Wind Speed		216 km/hr		134 mph		
Mounting Characteristics		Fit Pipe Diameter				
Mounting and Downtilt Kit (included)		Ø50-115 mm		Ø2.0-4.5Ø in		
Mechanical Tilt Range		0-15°				



Quoted performance parameters are provided to offer typical, peak or range values only and may vary as a result of normal testing, manufacturing and operational conditions. Extreme operational conditions and/or stress on structural supports is beyond our control. Such conditions may result in damage to this product. Improvements to products may be made without notice.

P5827200

Dual Band | Panel Antenna | XX-Pol | 65° / 65° | 12.0 / 14.5 dBi | Fixed Tilt



Quoted performance parameters are provided to offer typical, peak or range values only and may vary as a result of normal testing, manufacturing and operational conditions. Extreme operational conditions and/or stress on structural supports is beyond our control. Such conditions may result in damage to this product. Improvements to products may be made without notice.