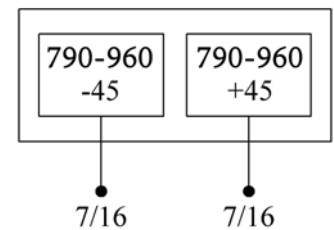
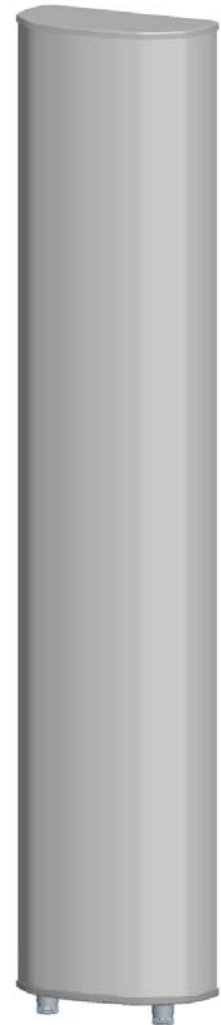


P5818200

Single Band | Panel | X-Pol | 65° | 16.5 dBi | Variable Tilt

- Single band, X-Pol, variable tilt, panel antenna
- Continuously adjustable downtilt 0°-10°
- Manual (MET) or Remote (RET) electrical tilt options
- Mounting and downtilt brackets included

Ordering Options		
Manual Electrical Tilt	P5818200	
Remote Electrical Tilt	P5818200G	
Electrical Characteristics	790-960 MHz	
Frequency Bands (MHz)	790-896 MHz	870-960 MHz
Polarization	±45°	
Horizontal Beamwidth	65°	65°
Vertical Beamwidth	9.8°	9.5°
Gain	16.0 dBi	16.5 dBi
Electrical Downtilt	0-10°	
Impedance	50Ω	
VSWR	≤ 1.5	
Upper Sidelobe Suppression (dB)	0°...5°...10° 16°...16°...15	
Front-to-Back Ratio	≥ 25 dB	
Isolation	≥ 30 dB	
IM3 (2x43 dBm carrier)	≤ -150 dBc	
Input Power	400 W	
Operating Temperature	-40° to 60° C (-40° to 140° F)	
Lightning Protection	DC Ground	
Connector(s)	2 / 7/16-DIN Female / Bottom	
Mechanical Characteristics		
Radome Material/Color	UPVC / Gray	
Dimensions (Height x Width x Depth)	1980 x 270 x 137 mm	78.0 x 10.6 x 5.4 in
Weight without Mounting Brackets	20.5 kg	45.2 lbs
Packing Dimensions (H x W x D)	2250 x 230 x 380 mm	88.6 x 9.1 x 15.0 in
Survival Wind Speed	216 km/hr	134 mph
Mounting Options		
	Attach to Pipe Diameter	
Mounting & Downtilt Bracket Kit Included	50-115 mm	2.0-4.5 in
Mechanical Tilt	0°-15°	



Quoted performance parameters are provided to offer typical, peak or range values only and may vary as a result of normal testing, manufacturing and operational conditions. Extreme operational conditions and/or stress on structural supports is beyond our control. Such conditions may result in damage to this product. Improvements to products may be made without notice.