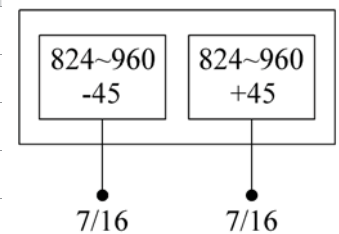
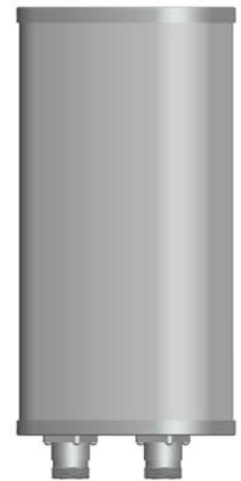


P5814200F_x

Single Band | Panel | X-Pol | 65° | 12 dBi | Fixed Tilt

- Single band, X-Pol, fixed tilt, panel antenna
- Mounting and downtilt brackets included

Ordering Options		
When ordering, replace "x" in the model number with one of the electrical downtilt options listed below.		
Electrical Characteristics	824-960 MHz	
Frequency Bands (MHz)	824-896 MHz	870-960 MHz
Polarization	±45°	
Horizontal Beamwidth	68°	65°
Vertical Beamwidth	30°	28°
Gain	12 dBi	
Electrical Downtilt	(x) 0°	
Impedance	50Ω	
VSWR	≤ 1.4	
Upper Sidelobe Suppression (dB)	≥ 15 dB	
Front-to-Back Ratio	≥ 25 dB	
Isolation	≥ 30 dB	
IM3 (2x43 dBm carrier)	≤ -150 dBc	
Input Power	500 W	
Operating Temperature	-40° to 60° C (-40° to 140° F)	
Lightning Protection	DC Ground	
Connector(s)	2 / 7/16-DIN Female / Bottom	
Mechanical Characteristics		
Radome Material/Color	UPVC / Gray	
Dimensions (Height x Width x Depth)	650 x 280 x 85 mm	25.6 x 11.0 x 3.3 in
Weight without Mounting Brackets	9.5 kg	20.9 lbs
Packing Dimensions (H x W x D)	740 x 330 x 150 mm	29.1 x 13.0 x 5.9 in
Survival Wind Speed	216 km/hr	134 mph
Mounting Options		
Attach to Pipe Diameter		
Mounting & Downtilt Bracket Kit Included	50-115 mm	2.0-4.5 in
Mechanical Tilt	0°-15°	



Quoted performance parameters are provided to offer typical, peak or range values only and may vary as a result of normal testing, manufacturing and operational conditions. Extreme operational conditions and/or stress on structural supports is beyond our control. Such conditions may result in damage to this product. Improvements to products may be made without notice.