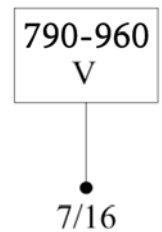
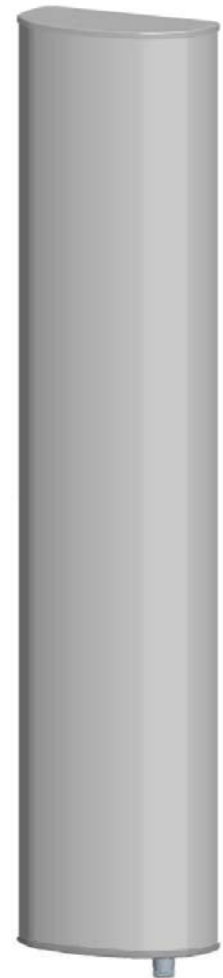


P5720200F_x

Single Band | Panel | V-Pol | 65° | 18 dBi | Fixed Tilt

- Single band, V-Pol, fixed tilt, panel antenna
- Mounting and downtilt brackets included

Ordering Options		
When ordering, replace "x" in the model number with one of the electrical downtilt options listed below.		
Electrical Characteristics	790-960 MHz	
Frequency Bands (MHz)	790-896 MHz	870-960 MHz
Polarization	Vertical	
Horizontal Beamwidth	68°	65°
Vertical Beamwidth	7.5°	7°
Gain	17.5 dBi	18 dBi
Electrical Downtilt	(x) 0°	
Impedance	50Ω	
VSWR	≤ 1.4	
Upper Sidelobe Suppression (dB)	≥ 15 dB	
Front-to-Back Ratio	≥ 28 dB	
IM3 (2x43 dBm carrier)	≤ -150 dBc	
Input Power	500 W	
Operating Temperature	-40° to 60° C (-40° to 140° F)	
Lightning Protection	DC Ground	
Connector(s)	1 / 7/16-DIN Female / Bottom	
Mechanical Characteristics		
Radome Material/Color	UPVC / Gray	
Dimensions (Height x Width x Depth)	2530 x 270 x 137 mm	99.6 x 10.6 x 5.4 in
Weight without Mounting Brackets	18 kg	39.7 lbs
Packing Dimensions (H x W x D)	2780 x 380 x 230 mm	109.4 x 15.0 x 9.1 in
Survival Wind Speed	216 km/hr	134 mph
Mounting Options		
	Attach to Pipe Diameter	
Mounting & Downtilt Bracket Kit Included	50-115 mm	2.0-4.5 in
Mechanical Tilt	0°-15°	



Quoted performance parameters are provided to offer typical, peak or range values only and may vary as a result of normal testing, manufacturing and operational conditions. Extreme operational conditions and/or stress on structural supports is beyond our control. Such conditions may result in damage to this product. Improvements to products may be made without notice.