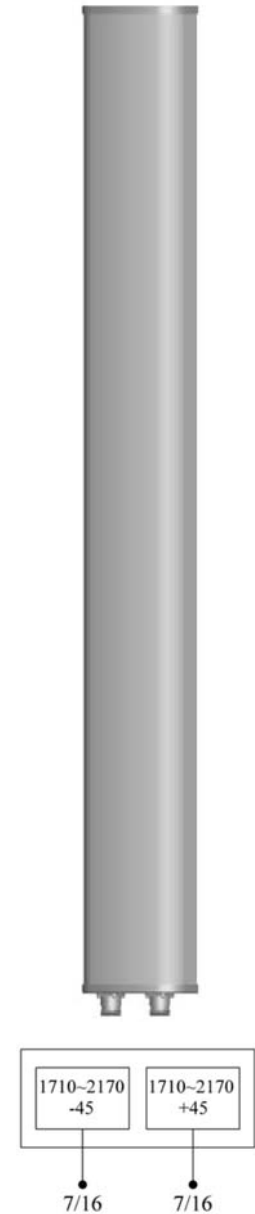


P5178100

Single Band | Panel Antenna | X-Pol | 65° | 19.5 dBi | Variable Tilt

- Single band, X-Pol, variable tilt, panel antenna
- Continuously adjustable downtilt 0°-8°
- Manual (MET) or Remote (RET) electrical tilt options
- Mounting and downtilt brackets included

Ordering Options		Model Number	
Manual Electrical Tilt		P5178100	
Remote Electrical Tilt		P5178100G	
Other accessories are ordered separately.			
Electrical Characteristics		1710-2170 MHz	
Frequency Bands		1710-1880 MHz	1850-1990 MHz
Polarization		±45°	
Horizontal Beamwidth		67°	64°
Vertical Beamwidth		5°	4.3°
Gain		19 dBi	19.5 dBi
Electrical Downtilt		0-8°	
Impedance		50Ω	
VSWR		≤ 1.5	
Upper Sidelobe Suppression		0°...4°...8° 15...15...15 dB	
Front-to-Back Ratio		≥ 25 dB	
Isolation		≥ 30 dB	
IM3 (2x43 dBm carrier)		≤ -150 dBc	
Input Power		300 W	
Total Number of Connectors		Antennas has 2 connectors located at the bottom	
Connectors Per Band, Type, Location	1710-2170 MHz	2 Connectors / 7/16-DIN Female / Bottom	
Lightning Protection		DC Ground	
Operating Temperature		-40° to +60° C (-40° to +140° F)	
Mechanical Characteristics			
Radome Material / Color		UPVC / Grey	
Dimensions (Length x Width x Depth)		1980 x 160 x 80 mm	78.0 x 6.3 x 3.1 in
Weight without Mounting Brackets		12.5 kg	27.6 lbs
Packing Dimensions (LxWxD)		2270 x 210 x 165 mm	89.4 x 8.3 x 6.5 in
Survival Wind Speed		216 km/hr	134 mph
Mounting Characteristics		Attach to Pipe Diameter	
Mounting & Downtilt Brackets (included)		Ø50-Ø80 mm	Ø2.0-Ø3.1 in
Mechanical Tilt Range		0°-10°	



Quoted performance parameters are provided to offer typical, peak or range values only and may vary as a result of normal testing, manufacturing and operational conditions. Extreme operational conditions and/or stress on structural supports is beyond our control. Such conditions may result in damage to this product. Improvements to products may be made without notice.