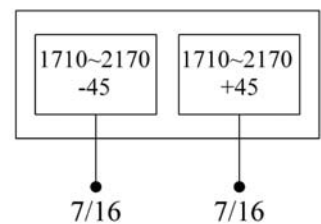
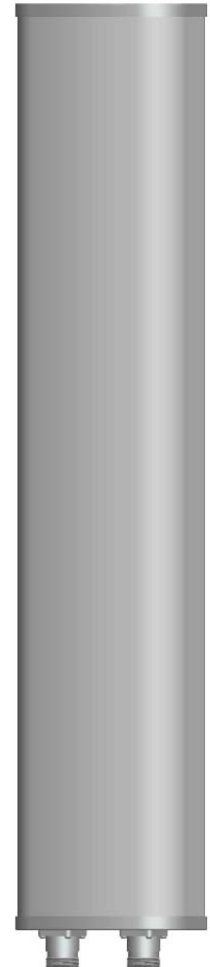


P5176100

Single Band | Panel | X-Pol | 65° | 17.5 dBi | Variable Electrical Tilt

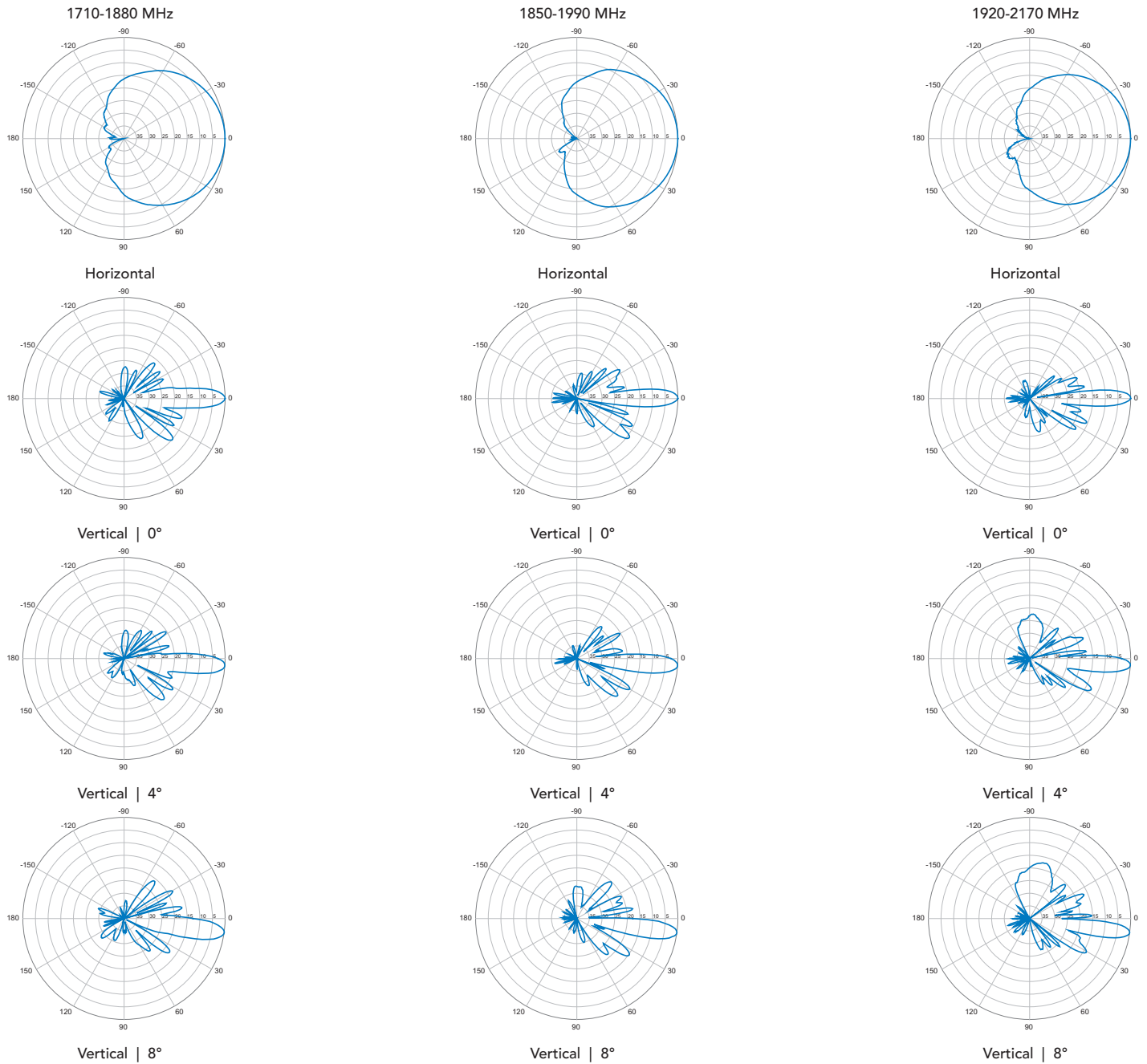
Ordering Options	Model Number		
Manual Electrical Tilt	P5176100		
Remote Electrical Tilt	P5176100G		
Electrical Characteristics	1710-2170 MHz		
Frequency Bands	1710-1880 MHz	1850-1990 MHz	1920-2170 MHz
Polarization	±45°		
Horizontal Beamwidth	67°	64°	63°
Vertical Beamwidth	8°	7.5°	7°
Gain	17 dBi	17.3 dBi	17.5 dBi
Electrical Downtilt	0°-8°		
Impedance	50Ω		
VSWR	≤ 1.5		
Upper Sidelobe Suppression (dB)	0°...4°...8° 16...16...16		
Front-to-Back Ratio	≥ 25 dB		
Isolation	≥ 30 dB		
IM3 (2x43 dBm carrier)	≤ -150 dBc		
Input Power	300 W		
Lightning Protection	DC Ground		
Operating Temperature	-40° to 60° C	-40° to 140° F	
Connector(s)	2 Ports / 7-16 DIN / Female / Bottom		
Mechanical Characteristics			
Radome Material/Color	UPVC / Grey		
Dimensions (Height x Width x Depth)	1225 x 160 x 80 mm	48.2 x 6.3 x 3.1 in	
Weight without Mounting Brackets	9 kg	19.8 lbs	
Packing Dimensions (HxWxD)	1670 x 250 x 170 mm	65.7 x 9.8 x 6.7 in	
Survival Wind Speed	216 km/hr	134 mph	
Mounting Options	Fits Pipe Diameter		
Mounting and Downtilt Kit (included)	Ø50-Ø80 mm	Ø2.0-Ø3.1 in	
Mechanical Tilt	0°-15°		



Quoted performance parameters are provided to offer typical or range values only and may vary as a result of normal manufacturing and operational conditions. Extreme operational conditions and/or stress on structural supports is beyond our control. Such conditions may result in damage to this product. Improvements to product may be made without notice.

P5176100

Single Band | Panel | X-Pol | 65° | 17.5 dBi | Variable Electrical Tilt



Quoted performance parameters are provided to offer typical or range values only and may vary as a result of normal manufacturing and operational conditions. Extreme operational conditions and/or stress on structural supports is beyond our control. Such conditions may result in damage to this product. Improvements to product may be made without notice.