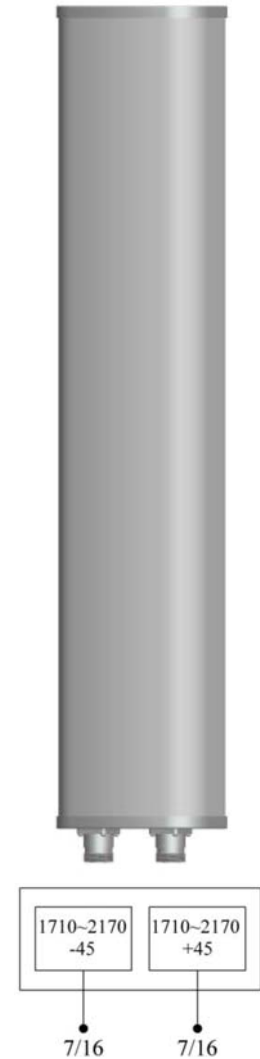


P5174100

Single Band | Panel Antenna | X-Pol | 65° | 14.9 dBi | Variable Tilt

- Single band, X-Pol, variable tilt, panel antenna
- Independent variable tilt on each band 0-15° / 0-15°
- Can be ordered with manual or remote electrical tilt control

Ordering Options		Model Number	
Manual Electrical Tilt		P5174100	
Remote Electrical Tilt		P5174100G	
Other accessories are ordered separately.			
Electrical Characteristics		1710-2170 MHz	
Frequency Bands (MHz)		1710-1880	1850-1990
Polarization		±45°	
Horizontal Beamwidth		69.2° (±2.8)	67° (±4)
Vertical Beamwidth		13.5° (±1)	13° (±1)
Gain		14.9 ±0.5 dBi	14.9 ±0.6 dBi
Electrical Downtilt		0-15°	
Impedance		50Ω	
VSWR		≤ 1.5	
First Sidelobe (full range)		> 13.5	> 12.7
Upper Sidelobe Suppression (0°)		> 16.5	> 15.9
Front-to-Back		> 26.8 dB	> 23 dB
Isolation		≥ 30 dB	
IM3 (2x43dBm carrier)		≤ -150 dBc	
Input Power		200 W	
Total Number of Connectors		Antennas has 2 connectors located at the bottom	
Connectors Per Band, Type, Location	1710-2170 MHz	2 Connectors / 7/16-DIN Female / Bottom	
Diplexed		No	
Lightning Protection		DC Ground	
Operating Temperature		-40° to +60° C (-40° to +140° F)	
Mechanical Characteristics		Fits Pipe Diameter	
Radome Material / Color		UPVC / Gray	
Dimensions (Length x Width x Depth)		720 x 160 x 80 mm	28.3 x 6.3 x 3.1 in
Weight without Mounting Brackets		4 kg	8.8 lbs
Packing Dimensions (L x W x D)		1060 x 270 x 190 mm	41.7 x 10.6 x 7.5 in
Survival Wind Speed		216 km/hr	134 mph
Mounting Characteristics		Fits Pipe Diameter	
Mounting and Downtilt Brackets (included)		Ø50-Ø85 mm	Ø2.0-Ø3.3 in
Mechanical Tilt Range		0°-15°	



Quoted performance parameters are provided to offer typical or range values only and may vary as a result of normal manufacturing and operational conditions. Extreme operational conditions and/or stress on structural supports is beyond our control. Such conditions may result in damage to this product. Improvements to product may be made without notice.