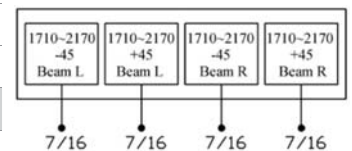
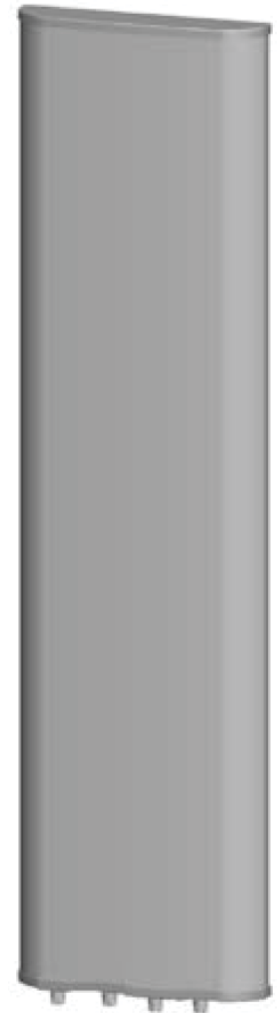


## P5135200

Twin Beam | Twin Band | Panel Antenna | (2x) X-Pol | 37° | 20.0 dBi | Variable Tilt

- Twin band, Twin Beam, (2x) X-Pol, variable tilt, panel antenna
- Continuously adjustable downtilt 0°-10°
- Beamwidths are ±30° from antenna center
- Manual (MET) or Remote (RET) electrical tilt options
- Mounting and downtilt brackets included

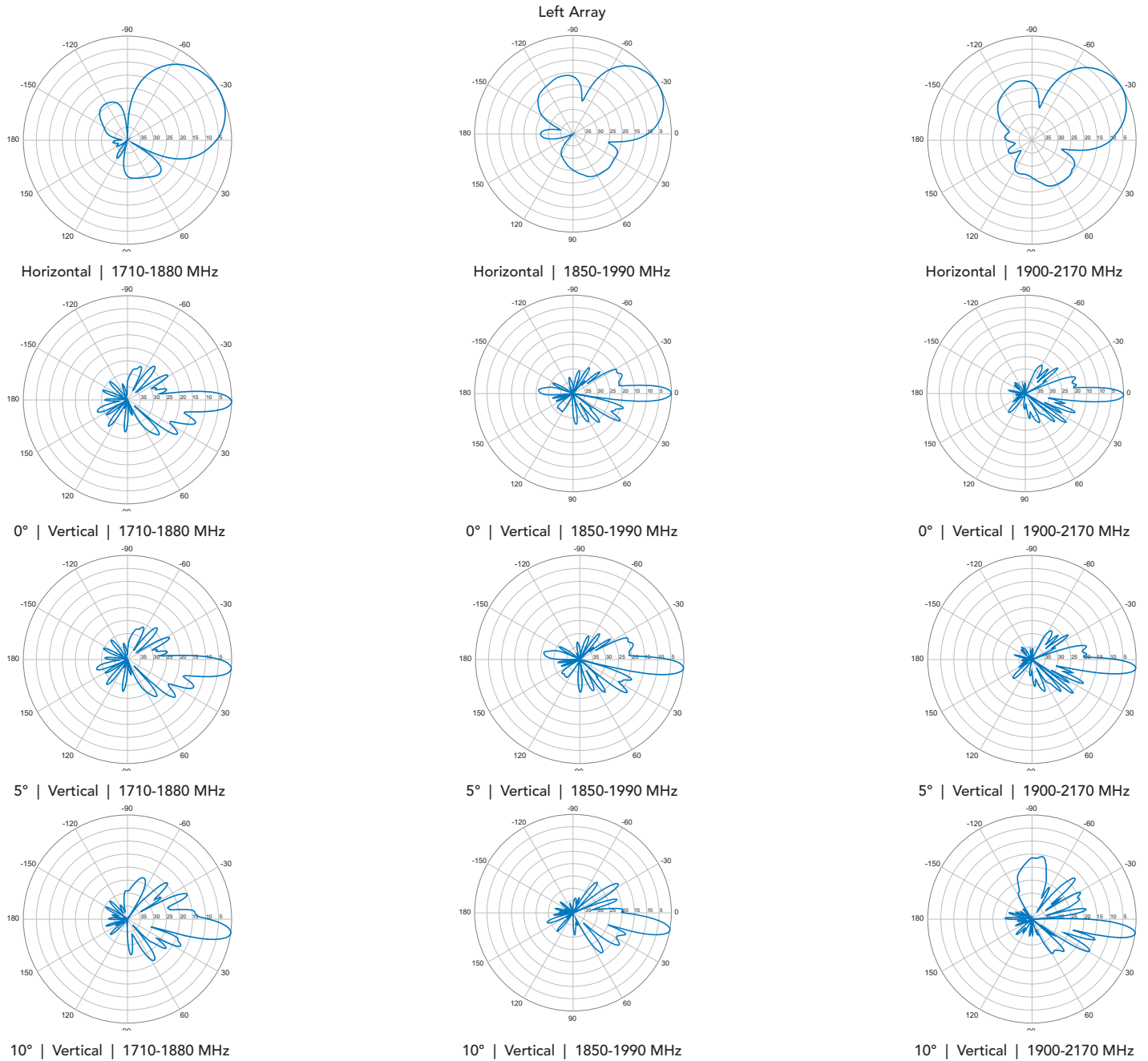
Ordering Options		Model Number	
Manual Electrical Tilt		P5135200	
Remote Electrical Tilt		P5135200G	
Other accessories are ordered separately.			
Electrical Characteristics		(2x) 1710-2170 MHz	
Frequency Bands	1710-1880 MHz	1850-1990 MHz	1900-2170 MHz
Polarization	(2x) ±45°		
Horizontal Beamwidth	41°	38°	36°
Vertical Beamwidth	7°	6.8°	6.5°
Beamwidths	Beamwidths are ±30° from antenna center.		
Gain	19.2 dBi	19.5 dBi	19.9 dBi
Electrical Downtilt	0-10°		
Impedance	50Ω		
VSWR	≤ 1.5		
Upper Sidelobe Suppression	0°...5°...10° 15...15...15 dB		
Front-to-Back Ratio	≥ 25 dB		
Isolation	≥ 28 dB		
IM3 (2x43 dBm carrier)	≤ -150 dBc		
Input Power	200 W		
Total Number of Connectors	Antennas has 4 connectors located at the bottom		
Connectors Per Band, Type, Location	1710-2170 MHz	2 Connectors / 7/16-DIN Female / Bottom	
	1710-2170 MHz	2 Connectors / 7/16-DIN Female / Bottom	
Lightning Protection	DC Ground		
Operating Temperature	-40° to +60° C (-40° to +140° F)		
Mechanical Characteristics			
Radome Material / Color	UPVC / Grey		
Dimensions (Length x Width x Depth)	1400 x 385 x 137 mm	55.1 x 15.2 x 5.4 in	
Weight without Mounting Brackets	22 kg	48.5 lbs	
Packing Dimensions (LxWxD)	1650 x 500 x 230 mm	65.0 x 19.7 x 9.1 in	
Survival Wind Speed	216 km/hr	134 mph	
Mounting Characteristics		Attach to Pipe Diameter	
Mounting & Downtilt Brackets (included)	Ø50-Ø115 mm	Ø2.0-Ø4.5 in	
Mechanical Tilt Range	0°-10°		



Quoted performance parameters are provided to offer typical, peak or range values only and may vary as a result of normal testing, manufacturing and operational conditions. Extreme operational conditions and/or stress on structural supports is beyond our control. Such conditions may result in damage to this product. Improvements to products may be made without notice.

P5135200

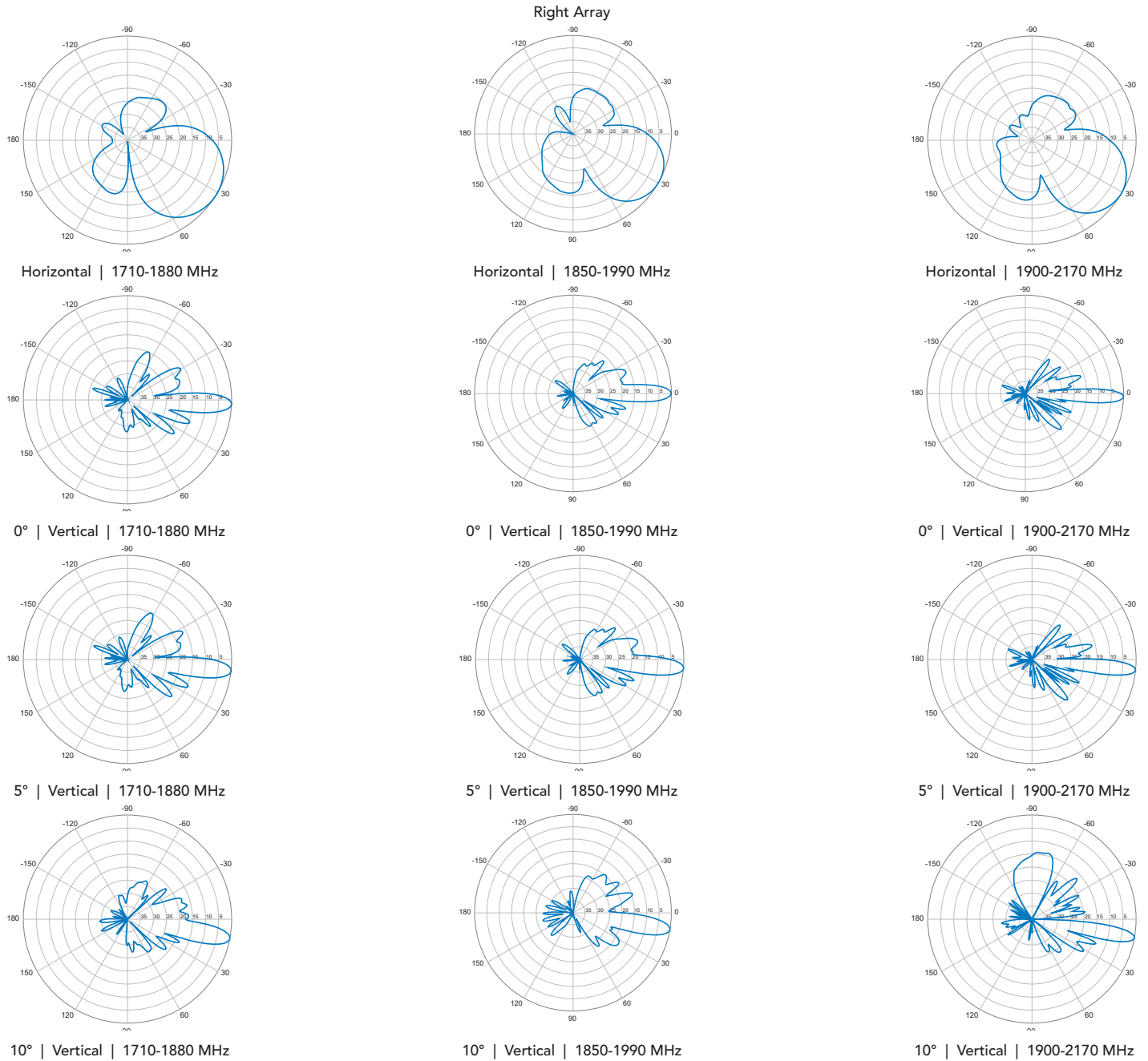
Twin Beam | Twin Band | Panel Antenna | (2x) X-Pol | 37° | 20.0 dBi | Variable Tilt



Quoted performance parameters are provided to offer typical, peak or range values only and may vary as a result of normal testing, manufacturing and operational conditions. Extreme operational conditions and/or stress on structural supports is beyond our control. Such conditions may result in damage to this product. Improvements to products may be made without notice.

P5135200

Twin Beam | Twin Band | Panel Antenna | (2x) X-Pol | 37° | 20.0 dBi | Variable Tilt



Quoted performance parameters are provided to offer typical, peak or range values only and may vary as a result of normal testing, manufacturing and operational conditions. Extreme operational conditions and/or stress on structural supports is beyond our control. Such conditions may result in damage to this product. Improvements to products may be made without notice.