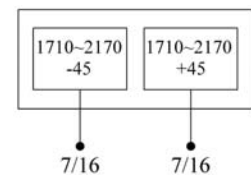
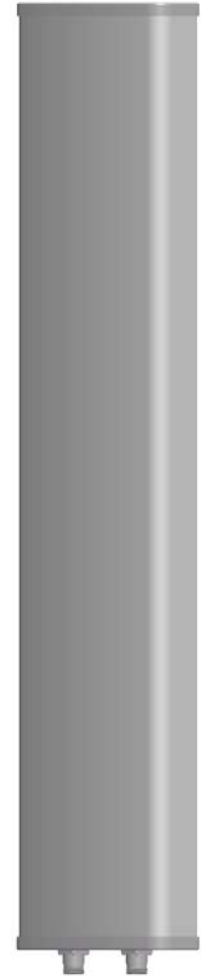


P5135102

Single Band | Panel Antenna | X-Pol | 33° | 20.5 dBi | Variable Tilt

- Single band, X-Pol, variable tilt, panel antenna
- continuously adjustable downtilt 0°-10°
- Manual (MET) or Remote (RET) electrical tilt options
- Mounting and downtilt brackets included

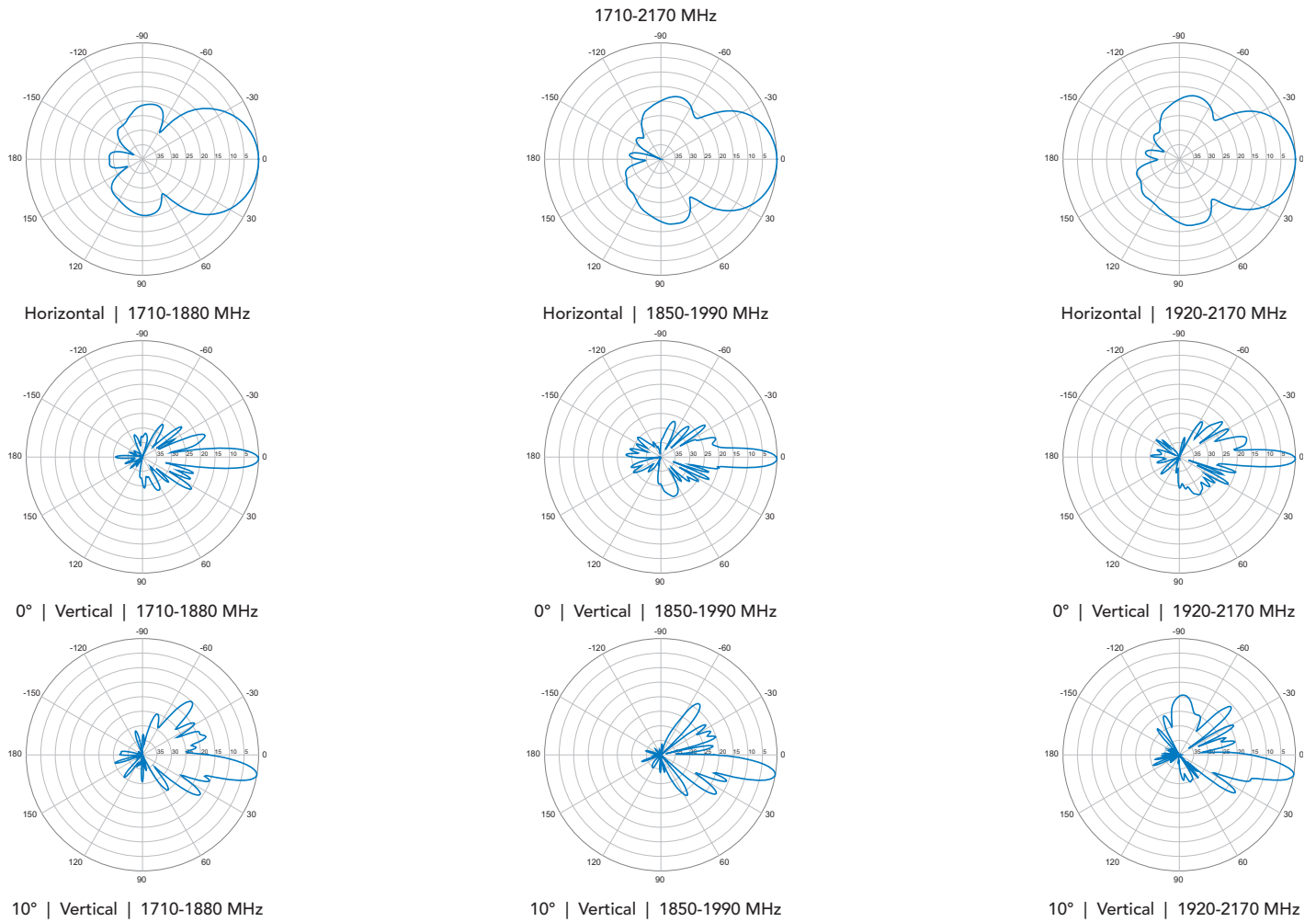
Ordering Options		Model Number
Manual Electrical Tilt		P5135102
Remote Electrical Tilt		P5135102G
Other accessories are ordered separately.		
Electrical Characteristics		1710-2170 MHz
Frequency Bands		1710-1880 MHz 1850-1990 MHz 1920-2170 MHz
Polarization		±45°
Horizontal Beamwidth		36° 33° 31°
Vertical Beamwidth		7.5° 7° 6.5°
Gain		20.0 dBi 20.3 dBi 20.5 dBi
Electrical Downtilt		0-10°
Impedance		50Ω
VSWR		< 1.5
Upper Sidelobe Suppression		> 16 dB > 16 dB > 16 dB
Front-to-Back Ratio		> 28 dB
Isolation		≥ 30 dB
IM3 (2x43 dBm carrier)		< -150 dBc
Input Power		300 W
Cross-Polar Ratio	Main Direction	18 dB
	Sector Edge	10 dB
Squint		≤ 3
Total Number of Connectors		Antennas has 2 connectors located at the bottom
Connectors Per Band, Type, Location	1710-2170 MHz	2 Connectors / 7/16-DIN Female / Bottom
Diplexed		No
Lightning Protection		DC Ground
Operating Temperature		-40° to +60° C (-40° to +140° F)
Mechanical Characteristics		
Radome Material / Color		Fiberglass / Grey
Reflector Material		Aluminum
Radiator Material		Aluminum / Copper
Dimensions (Length x Width x Depth)		1320 x 320 x 80 mm 52.0 x 12.6 x 3.1 in
Weight without Mounting Brackets		15 kg 33.1 lbs
Packing Dimensions (LxWxD)		1600 x 420 x 230 mm 63.0 x 16.5 x 9.1 in
Survival Wind Speed		216 km/hr 134 mph
Wind Loads (at 160 km/hr or 100 mph)	Front	482 N 108.4 lbf
	Lateral	107 N 24.0 lbf
	Rear	491 N 110.4 lbf
Mounting Characteristics		Attach to Pipe Diameter
Mounting & Downtilt Brackets (included)		Ø50-Ø115 mm Ø2.0-Ø4.5 in
Mechanical Tilt Range		0°-15°



Quoted performance parameters are provided to offer typical or range values only and may vary as a result of normal manufacturing and operational conditions. Extreme operational conditions and/or stress on structural supports is beyond our control. Such conditions may result in damage to this product. Improvements to product may be made without notice.

P5135102

Single Band | Panel Antenna | X-Pol | 33° | 20.5 dBi | Variable Tilt



Quoted performance parameters are provided to offer typical or range values only and may vary as a result of normal manufacturing and operational conditions. Extreme operational conditions and/or stress on structural supports is beyond our control. Such conditions may result in damage to this product. Improvements to product may be made without notice.