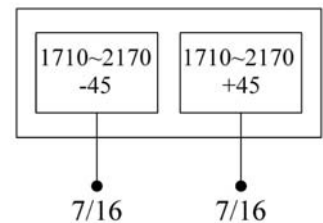
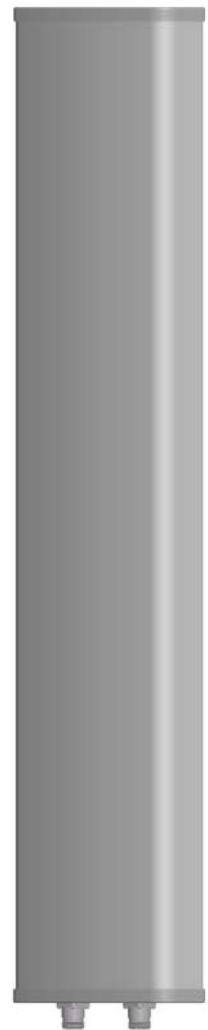


## P5135100Fx

Single Band | Panel | X-Pol | 33° | 21.0 dBi | Variable Electrical Tilt

| Ordering Options  | Model Number                         |                      |                |
|---|--------------------------------------|----------------------|----------------|
| Replace "x" with desired tilt from the options listed below in <i>Electrical Downtilt</i> . |                                      |                      |                |
| Electrical Characteristics  | 1710-2170 MHz                        |                      |                |
| Frequency Bands   | 1710-1880 MHz                        | 1850-1990 MHz        | 1920-2170 MHz  |
| Polarization  | ±45°                                 |                      |                |
| Horizontal Beamwidth  | 35°                                  | 34°                  | 32°            |
| Vertical Beamwidth  | 7°                                   | 6.5°                 | 6°             |
| Gain  | 20.5 dBi                             | 20.5 dBi             | 21 dBi         |
| Electrical Downtilt (x)   | 0°                                   |                      |                |
| Impedance   | 50Ω                                  |                      |                |
| VSWR  | ≤ 1.4                                |                      |                |
| Upper Sidelobe Suppression (dB)   | ≥ 15 dB                              |                      |                |
| Front-to-Back Ratio   | ≥ 27 dB                              |                      |                |
| Isolation   | ≥ 30 dB                              |                      |                |
| IM3 (2x43 dBm carrier)  | ≤ -150 dBc                           |                      |                |
| Input Power   | 200 W                                |                      |                |
| Lightning Protection  | DC Ground                            |                      |                |
| Operating Temperature   | -40° to 60° C                        |                      | -40° to 140° F |
| Connector(s)  | 2 Ports / 7-16 DIN / Female / Bottom |                      |                |
| Mechanical Characteristics  | UPVC / Grey                          |                      |                |
| Radome Material/Color   | UPVC / Grey                          |                      |                |
| Dimensions (Height x Width x Depth)   | 1320 x 280 x 85 mm                   | 52.0 x 11.0 x 3.3 in |                |
| Weight without Mounting Brackets  | 13 kg                                | 28.7 lbs             |                |
| Packing Dimensions (HxWxD)  | 1580 x 340 x 170 mm                  | 62.2 x 13.4 x 6.7 in |                |
| Survival Wind Speed   | 216 km/hr                            | 134 mph              |                |
| Mounting Options  | Fits Pipe Diameter                   |                      |                |
| Mounting and Downtilt Kit (included)  | Ø50-Ø115 mm                          | Ø2.0-Ø4.5 in         |                |
| Mechanical Tilt   | 0°-15°                               |                      |                |



Quoted performance parameters are provided to offer typical or range values only and may vary as a result of normal manufacturing and operational conditions. Extreme operational conditions and/or stress on structural supports is beyond our control. Such conditions may result in damage to this product. Improvements to product may be made without notice.