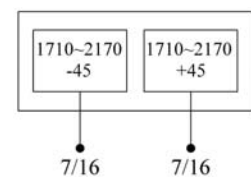
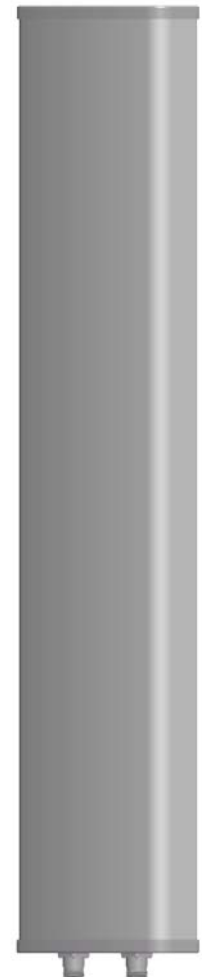


## P5135100

Single Band | Panel Antenna | X-Pol | 33° | 20.5 dBi | Variable Tilt

- Single band, X-Pol, variable tilt, panel antenna
- continuously adjustable downtilt 0°-10°
- Manual (MET) or Remote (RET) electrical tilt options
- Mounting and downtilt brackets included

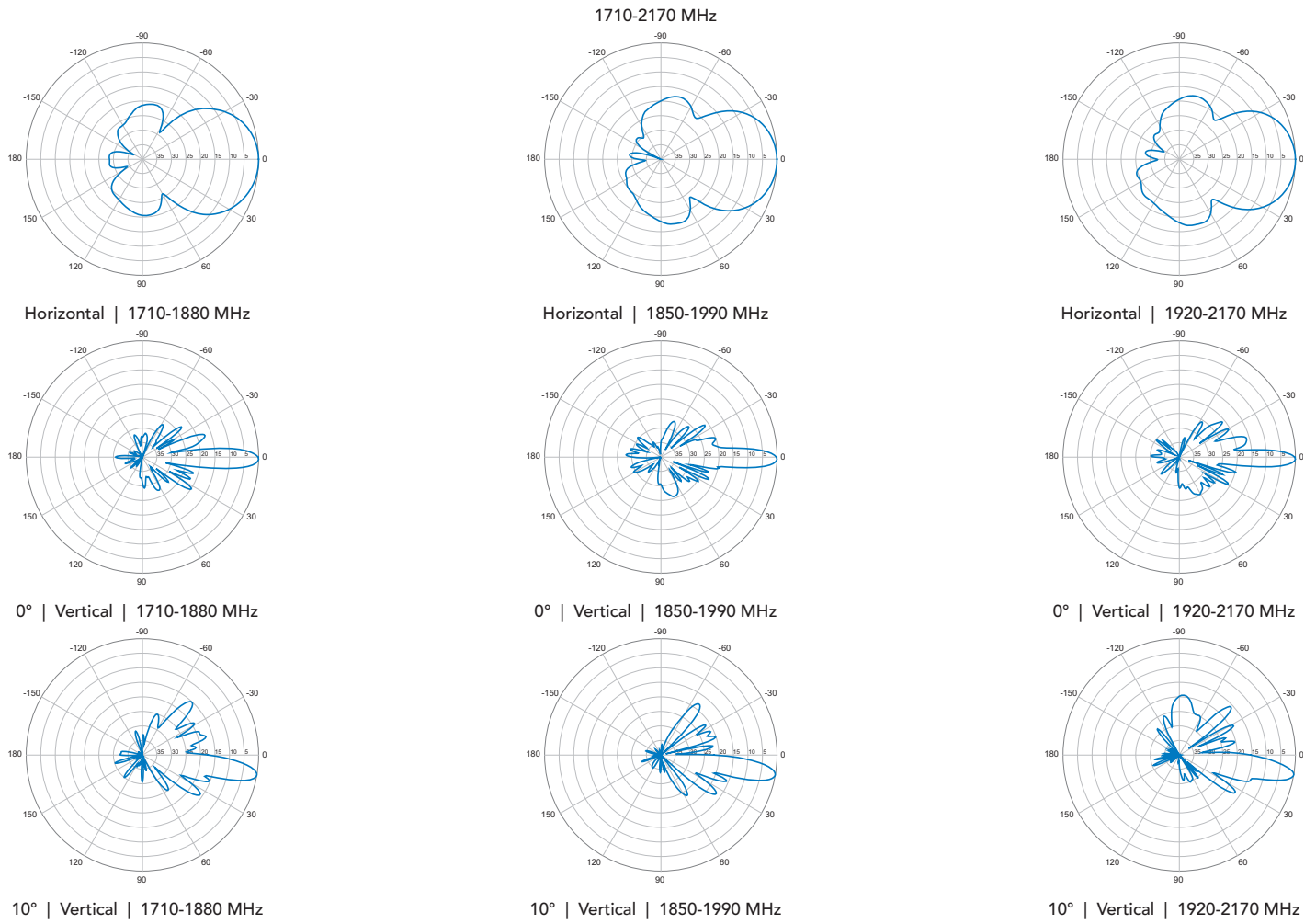
Ordering Options		Model Number
Manual Electrical Tilt		P5135100
Remote Electrical Tilt		P5135100G
Other accessories are ordered separately.		
Electrical Characteristics		1710-2170 MHz
Frequency Bands		1710-1880 MHz   1850-1990 MHz   1920-2170 MHz
Polarization		±45°
Horizontal Beamwidth		36°   33°   30°
Vertical Beamwidth		7.5°   7°   6.5°
Gain		20.0 dBi   20.3 dBi   20.5 dBi
Electrical Downtilt		0-10°
Impedance		50Ω
VSWR		≤ 1.5
Upper Sidelobe Suppression		0°...5°...10° 16...16...15 dB
Front-to-Back Ratio		≥ 27 dB
Isolation		≥ 30 dB
IM3 (2x43 dBm carrier)		≤ -150 dBc
Input Power		300 W
Total Number of Connectors		Antennas has 2 connectors located at the bottom
Connectors Per Band, Type, Location	1710-2170 MHz	2 Connectors / 7/16-DIN Female / Bottom
Diplexed		No
Lightning Protection		DC Ground
Operating Temperature		-40° to +60° C (-40° to +140° F)
Mechanical Characteristics		
Radome Material / Color		UPVC / Grey
Dimensions (Length x Width x Depth)		1320 x 320 x 80 mm   52.0 x 12.6 x 3.1 in
Weight without Mounting Brackets		15 kg   33.1 lbs
Packing Dimensions (LxWxD)		1600 x 420 x 230 mm   63.0 x 16.5 x 9.1 in
Survival Wind Speed		216 km/hr   134 mph
Mounting Characteristics		Attach to Pipe Diameter
Mounting & Downtilt Brackets (included)		Ø50-Ø115 mm   Ø2.0-Ø4.5 in
Mechanical Tilt Range		0°-15°



Quoted performance parameters are provided to offer typical or range values only and may vary as a result of normal manufacturing and operational conditions. Extreme operational conditions and/or stress on structural supports is beyond our control. Such conditions may result in damage to this product. Improvements to product may be made without notice.

P5135100

Single Band | Panel Antenna | X-Pol | 33° | 20.5 dBi | Variable Tilt



Quoted performance parameters are provided to offer typical or range values only and may vary as a result of normal manufacturing and operational conditions. Extreme operational conditions and/or stress on structural supports is beyond our control. Such conditions may result in damage to this product. Improvements to product may be made without notice.