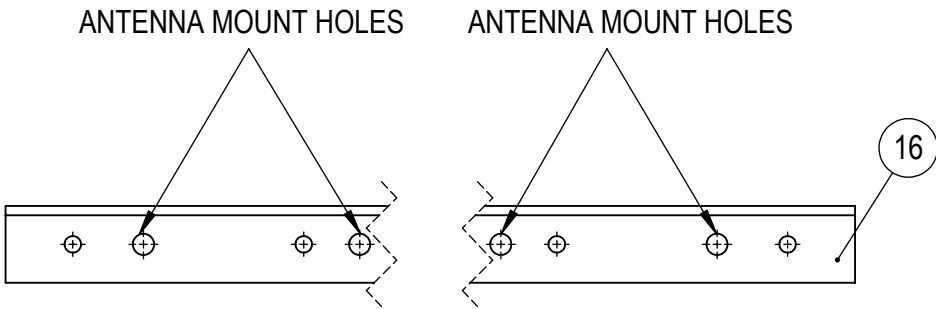
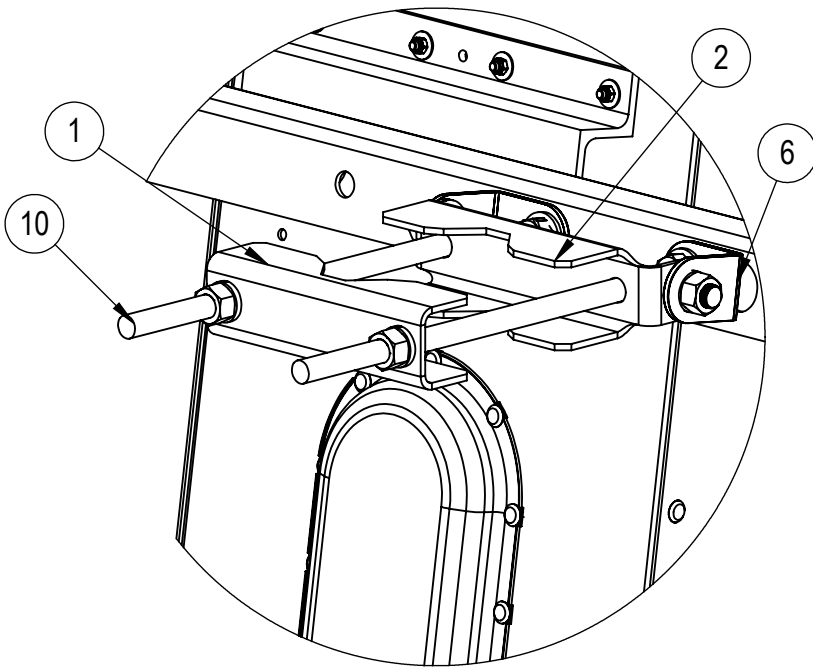


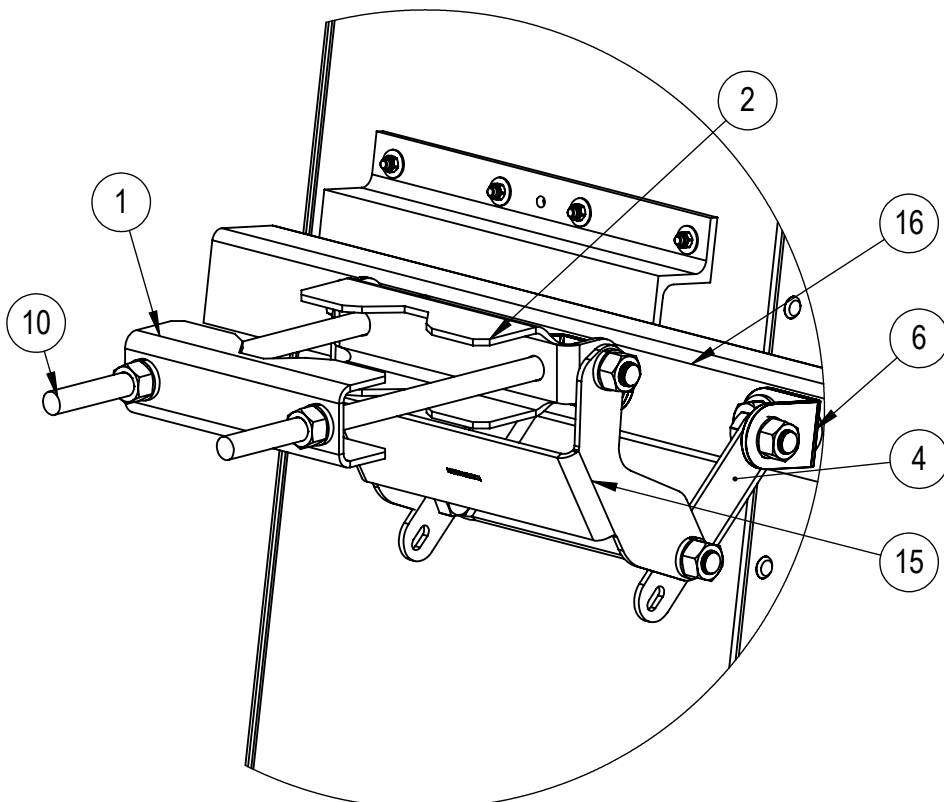
ITEM NO.	PART NUMBER	DESCRIPTION	QTY
1	H04421	PIPE GRIP, REAR	3
2	H04422	PIPE GRIP WITH ELEVATION	3
3	H04423	INDEXED SCISSOR BRACKET	1
4	H04424	BRACKET, SHORT DOWNTILT	1
5	H04425	BRACKET, LONG DOWNTILT	1
6	H04426	DOWN TILT, ANGLE BRACKET	6
7	39800613	WASHER - LOCK GALV 1/2	44
8	37210012	WASHER - GALV 1/2	24
9	37310012	NUT-HHCS GALV 1/2	44
10	37410011	1/2-13 X 11 STUD, GALV.	6
11	8500-352	SCREW, 1/2-13 X 1IN HHCS	14
12	660-017-1-003	SCREW, 1/4-20 X .75, HHCS (HEX)	2
13	660-017-1-004	NUT, 1/4-20, HEX NUT	2
14	660-017-1-002	WASHER, 1/4, (.385 x .680 x .094) SPLIT LOCK WASHER	2
15	H04480	MID SCISSOR BRACKET	1
16	H04389	OUTER MOUNTING BRACKET	3
17	37110112	BOLT 1/2-13 x 1-1/2in GALV	6



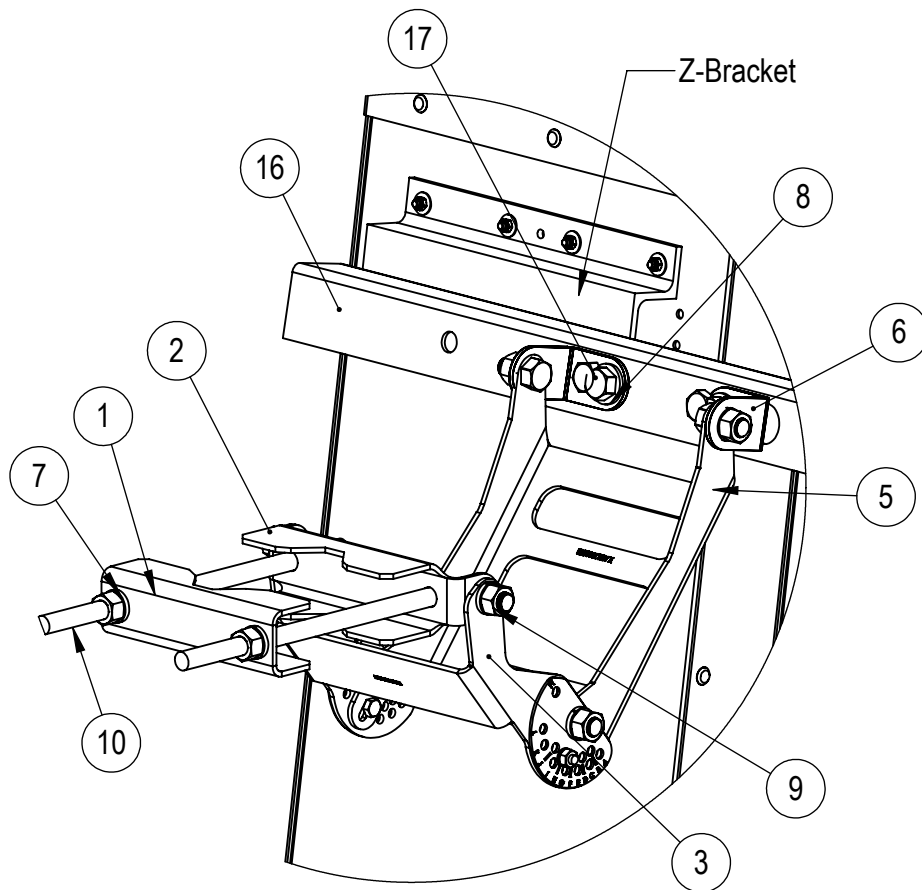
OUTER MOUNTING BRACKET  
(STANDARD SQUARE CHASSIS PROFILE)



DETAIL C



DETAIL B



DETAIL A

MKS09T07TWIN  
EXTENDED SCISSOR DUAL ANTENNA POLE MOUNT (STANDARD SQUARE CHASSIS PROFILE)  
(A copy of these instructions to be included in each mounting kit box at manufacturer)

1. Attach outer mounting bracket (16) to provided antenna z-brackets using 1/2" hardware and tighten 37 ft lbs (50 Nm).
2. Repeat for all z-brackets along antenna (6 locations).
3. Assemble top mounting tilt bracket (see detail A)

a. Attach threaded rods (10) to pipe grip with elevation (2) using 1/2" hardware and tighten 37 ft lbs (50 Nm).

(Ensure majority of threaded rod (10) is remaining to attach rear pipe grip.)

b. Use 1/4" hardware through indexed scissor bracket (3) and long down tilt bracket (5) securing tilt at zero degrees (A indicator) tighten to 11 ft lbs (15 Nm) .

4. Attach top mount tilt bracket assembly to top outer mounting bracket (16) using 1/2" hardware and tighten 37 ft lbs (50 Nm).

5. Assemble mid & bottom mounting bracket (see detail B & C)

a. Attach threaded rods (10) to pipe grip with elevation (2) using 1/2" hardware 37 ft lbs (50 Nm).

(Ensure majority of threaded rod (10) is remaining to attach rear pipe grip)

b. Mid bracket position should resemble top mount tilt bracket assembly at zero degrees.

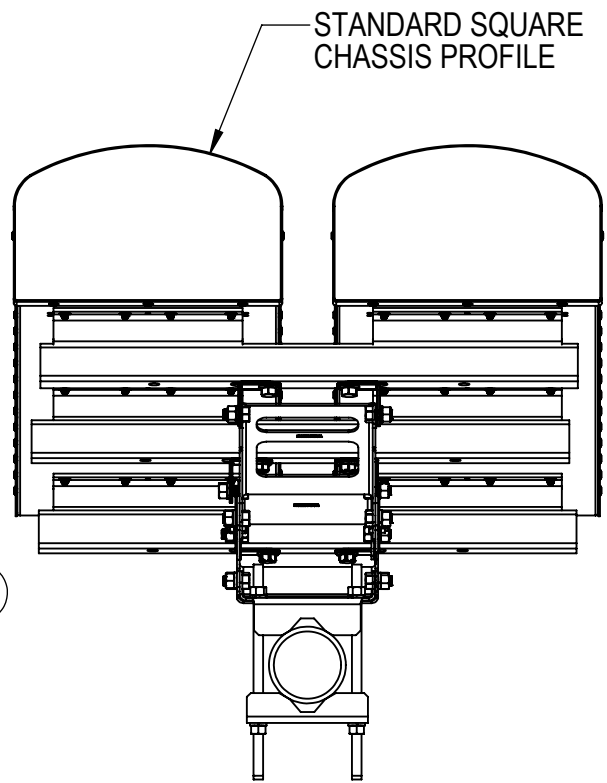
6. Attach mid and bottom mount bracket assembly to mid and bottom outer mounting bracket (16) using 1/2" hardware and tighten 37 ft lbs (50 Nm).

7. Bring full assembly (antennas, outer mounting brackets (16), top, mid, and bottom bracket assemblies) to pole.

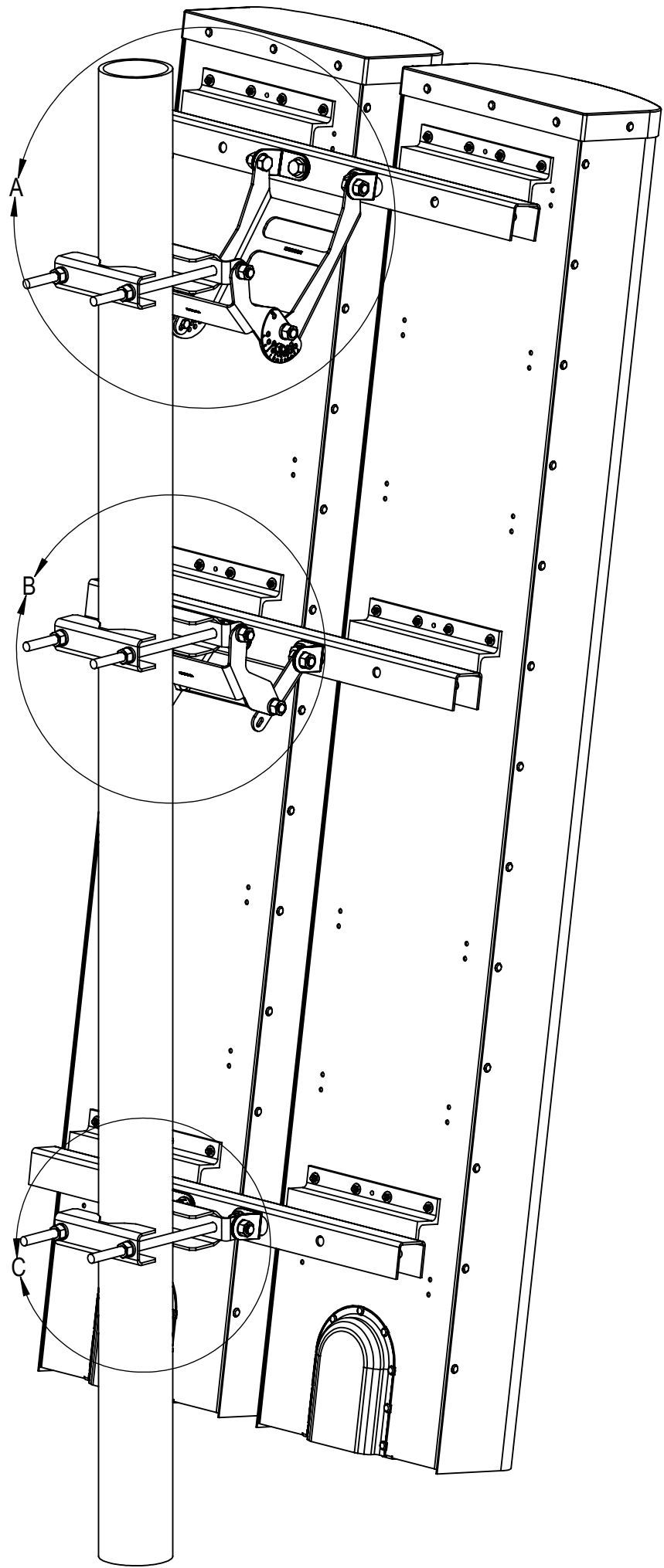
8. Using exposed threaded rod (10) attach rear mounting bracket (1) to pole using 1/2" hardware and tighten 37 ft lbs (50 Nm).

9. Make all electrical connections and weatherproof with self-amalgamating tape.


TILT INDICATOR CHART	
A	0°
B	2.0°
C	2.5°
D	3.0°
E	3.5°
F	4.5°
G	5.5°
H	6.5°
I	7.5°
J	8.0°
K	9.0°
L	10.0°
M	11.0°



STANDARD SQUARE  
CHASSIS PROFILE



ISOMETRIC VIEW

UNLESS OTHERWISE SPECIFIED DIMENSIONS ARE IN MILLIMETERS ANGULAR: ±1 0 PLACE: ±0.5 1 PLACE: ±0.25 2 PLACE: ±0.15 INTERPRET DIM AND TOL PER ASME Y14.5-2009		NAME	DATE	 1300 CAPITAL DRIVE ROCKFORD, IL 61109 (815) 399-0001 <a href="http://www.amphenol-antennas.com">www.amphenol-antennas.com</a>	
THIRD ANGLE PROJECTION		DRAWN BY	bworley		
DO NOT SCALE DRAWING		CHECKED BY		TITLE: <b>MOUNTING KIT, WIDE EXTENDED SCISSOR, 3 POINT, DUAL ANTENNAS</b>	
		ENG APPR.	jsierzenga		
TITLE BLOCK IN ACCORDANCE WITH ASME Y14.1M-2012		PROPRIETARY AND CONFIDENTIAL THE INFORMATION CONTAINED IN THIS DRAWING IS THE SOLE PROPERTY OF AMPHENOL ANTENNA SOLUTIONS. ANY REPRODUCTION IN PART OR AS A WHOLE WITHOUT THE WRITTEN PERMISSION OF AMPHENOL ANTENNA SOLUTIONS IS PROHIBITED.		SIZE <b>C</b>	DESIGNED USING <b>SOLIDWORKS</b>
		DWG. NO. <b>MKS09T07TWIN</b>		REV <b>1</b>	
		SCALE: NONE		WEIGHT (kg): 36.09	SHEET 1 OF 2

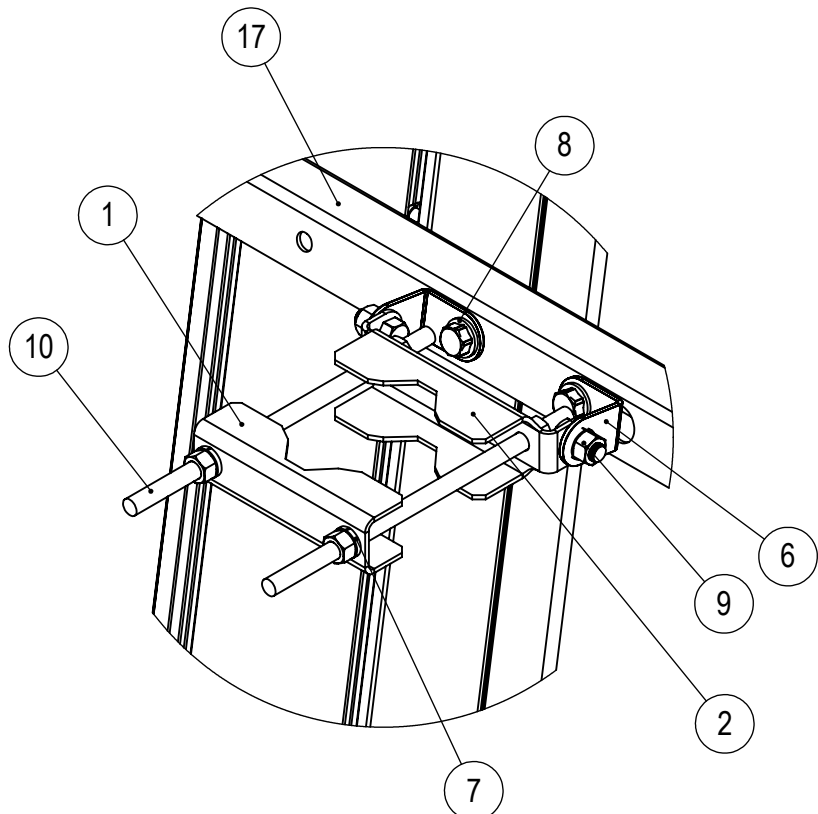


ITEM NO.	PART NUMBER	DESCRIPTION	QTY
1	H04421	PIPE GRIP, REAR	3
2	H04422	PIPE GRIP WITH ELEVATION	3
3	H04423	INDEXED SCISSOR BRACKET	1
4	H04424	BRACKET, SHORT DOWNTILT	1
5	H04425	BRACKET, LONG DOWNTILT	1
6	H04426	DOWN TILT, ANGLE BRACKET	6
7	39800613	WASHER - LOCK GALV 1/2	32
8	37210012	WASHER - GALV 1/2	12
9	37310012	NUT-HHCS GALV 1/2	32
10	37410011	1/2-13 X 11 STUD, GALV.	6
11	37110112	BOLT 1/2-13 x 1-1/2in GALV	6
12	8500-352	SCREW, 1/2-13 X 1in HHCS	14
13	660-017-1-003	SCREW, 1/4-20 X .75, HHCS (HEX)	2
14	660-017-1-004	NUT, 1/4-20, HEX NUT	2
15	660-017-1-002	WASHER, 1/4, (.385 x .680 x .094) SPLIT LOCK WASHER	2
16	H04480	MID SCISSOR BRACKET	1
17	H04389	OUTER MOUNTING BRACKET	3
18	CX063X25x00	ANTENNA	2
21	37410005	1/2-13 X 1 HHCS (GALV.)	6

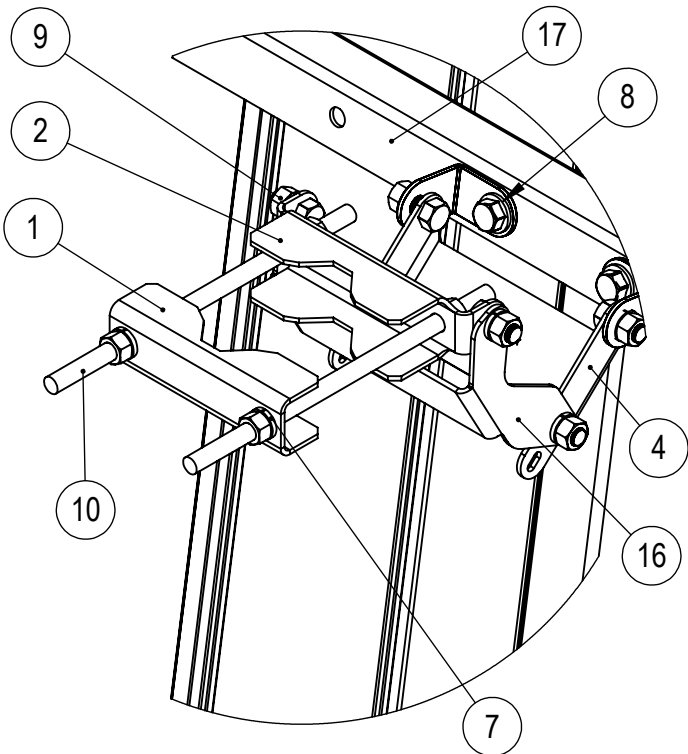
**MKS09T07TWIN**  
**EXTENDED SCISSOR DUAL ANTENNA POLE MOUNT (UNIVERSAL STYLE PROFILE)**  
(A copy of these instructions to be included in each mounting kit box at manufacturer)

Attach outer mounting bracket 17 to provided antenna channel runners (3/8" hardware) see BACK VIEW for dimensioned mounting locations; tighten to **15 ft lbs (20Nm)**. Repeat for all channel runners along antenna (12 locations). Assemble top mounting tilt bracket (see detail A)

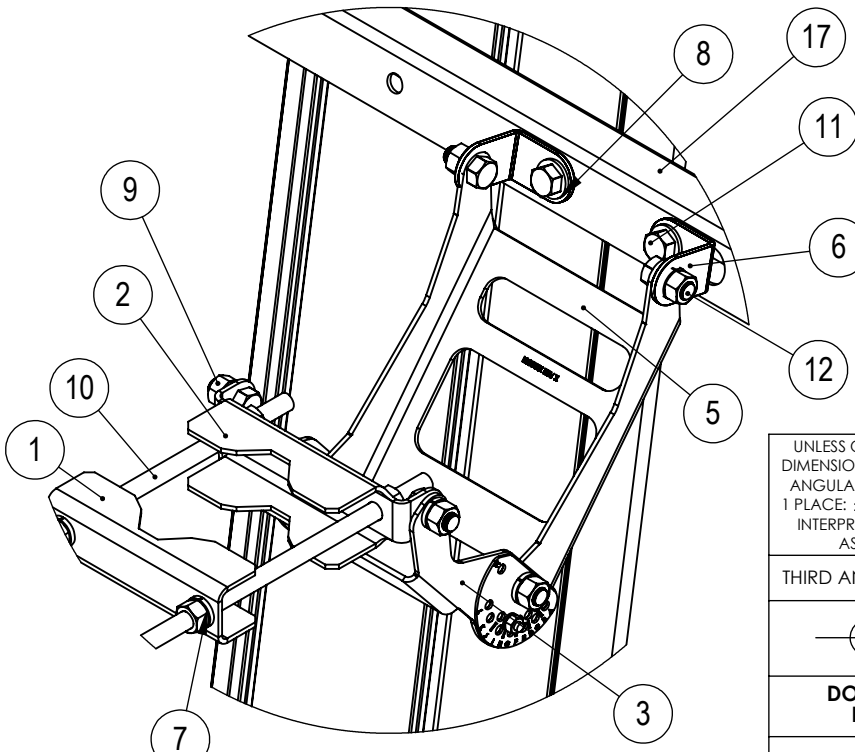
1. Attach threaded rods 10 to pipe grip with elevation 2 using 1/2" hardware tighten to **37 ft lbs (50 Nm)**.  
(Insure a majority of the threaded rod 10 is left to attach rear pipe grip later.)
2. Use 1/4" hardware through indexed scissor bracket 3 and long down tilt bracket 5 securing tilt at zero degrees (A indicator) tighten to **11 ft lbs (15 Nm)**.
4. Attach top mount tilt bracket assembly to top outer mounting bracket 17 using 1/2" hardware and tighten **37 ft lbs (50 Nm)**.
5. Assemble mid & bottom mounting bracket (see detail B & C)
  1. Attach threaded rods 10 to pipe grip with elevation 2 using 1/2" hardware and tighten **37 ft lbs (50 Nm)**.  
(Insure a majority of the threaded rod 10 is left to attach rear pipe grip later)
  2. Mid bracket position should resemble top mount tilt bracket assembly at zero degrees.
6. Attach mid and bottom mount bracket assembly to mid and bottom outer mounting bracket 17 using 1/2" hardware and tighten **37 ft lbs (50 Nm)**.
7. Bring full assembly (antennas, outer mounting brackets 17, top, mid, and bottom bracket assemblies) to pole.
8. Using exposed threaded rod 10 attach rear mounting bracket 1 to pole using 1/2" hardware and tighten **37 ft lbs (50 Nm)**.
9. Make all electrical connections and weatherproof with self-amalgamating tape.



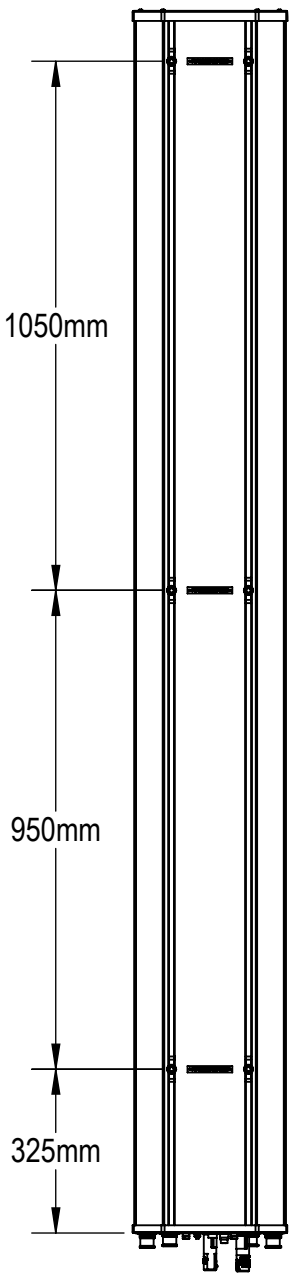
DETAIL C



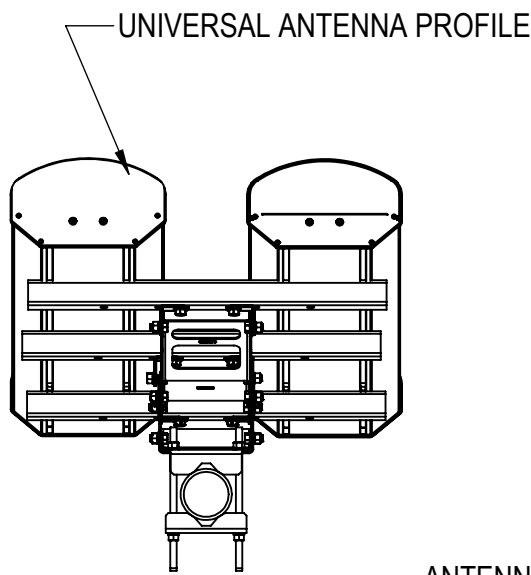
DETAIL B



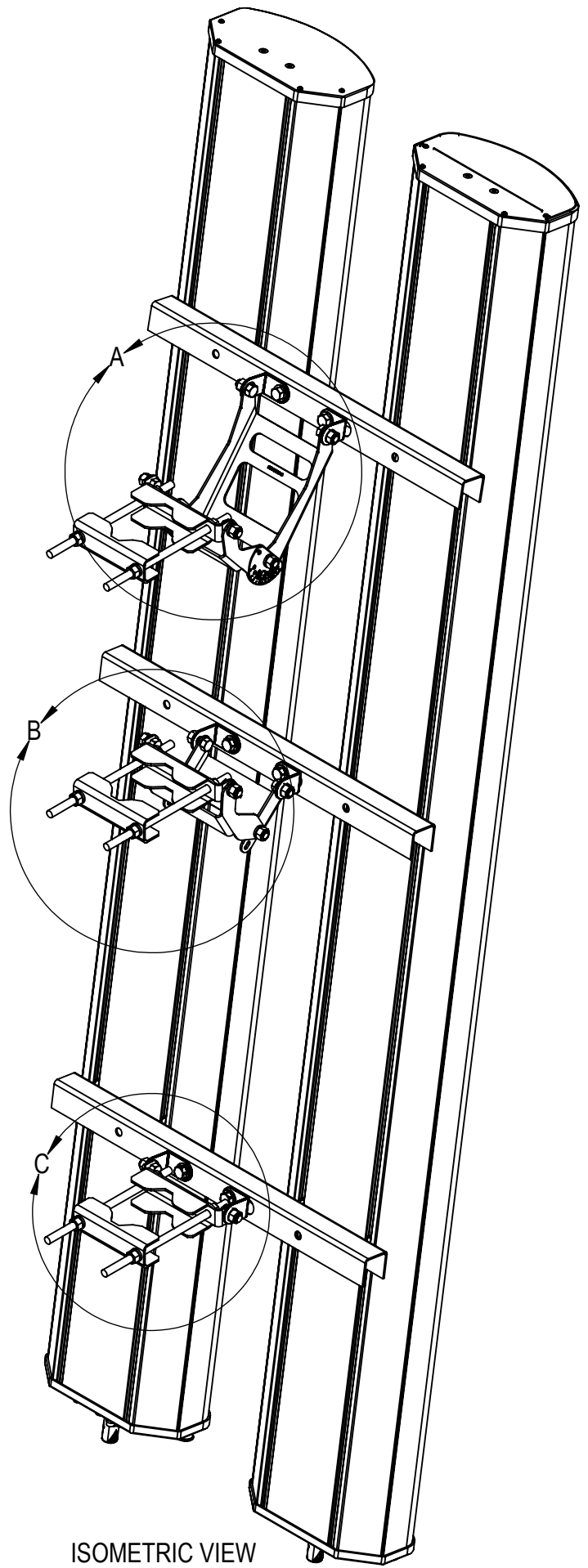
DETAIL A



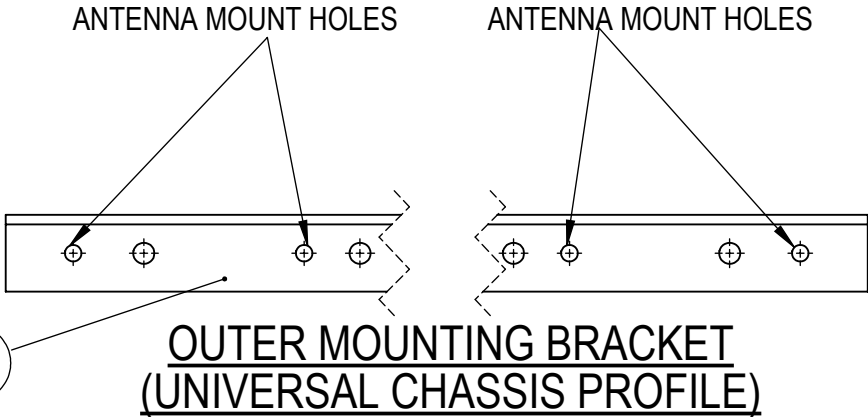
BACK VIEW  
(MOUNTING LOCATIONS)



TOP VIEW  
(ANTENNA TILTED)




ISOMETRIC VIEW



OUTER MOUNTING BRACKET  
(UNIVERSAL CHASSIS PROFILE)

UNLESS OTHERWISE SPECIFIED DIMENSIONS ARE IN MILLIMETERS ANGULAR: ±1° 0 PLACE: ±0.5 1 PLACE: ±0.25 2 PLACE: ±0.15 INTERPRET DIM AND TOL PER ASME Y14.5-2009	NAME	DATE
THIRD ANGLE PROJECTION	DRAWN BY: bworley	9/16/2016
DO NOT SCALE DRAWING	CHECKED BY:	
	ENG APPR: jsierzenga	09/20/2016
PROPRIETARY AND CONFIDENTIAL THE INFORMATION CONTAINED IN THIS DRAWING IS THE SOLE PROPERTY OF AMPHENOL ANTENNA SOLUTIONS. ANY REPRODUCTION IN PART OR AS A WHOLE WITHOUT THE WRITTEN PERMISSION OF AMPHENOL ANTENNA SOLUTIONS IS PROHIBITED.		
TITLE BLOCK IN ACCORDANCE WITH ASME Y14.1M-2012		

		1300 CAPITAL DRIVE ROCKFORD, IL 61109 (815) 399-0001	
		www.amphenol-antennas.com	
TITLE:			
MOUNTING KIT, WIDE EXTENDED SCISSOR, 3 POINT, DUAL ANTENNAS			
SIZE	DESIGNED USING	DWG. NO.	REV
C	SOLIDWORKS	MKS09T07TWIN	1
SCALE: NONE		WEIGHT (Kg): 36.13	SHEET 2 OF 2