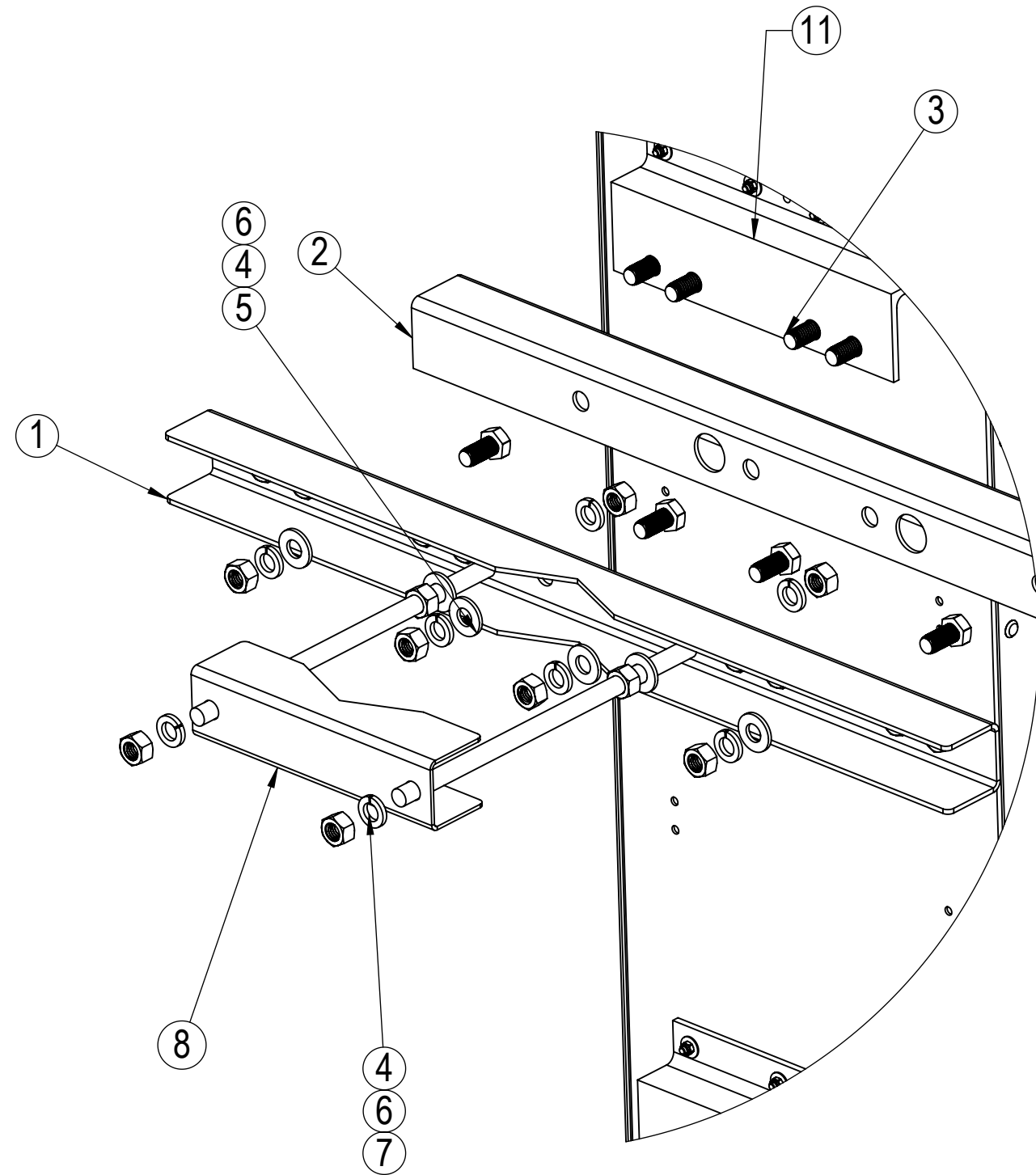


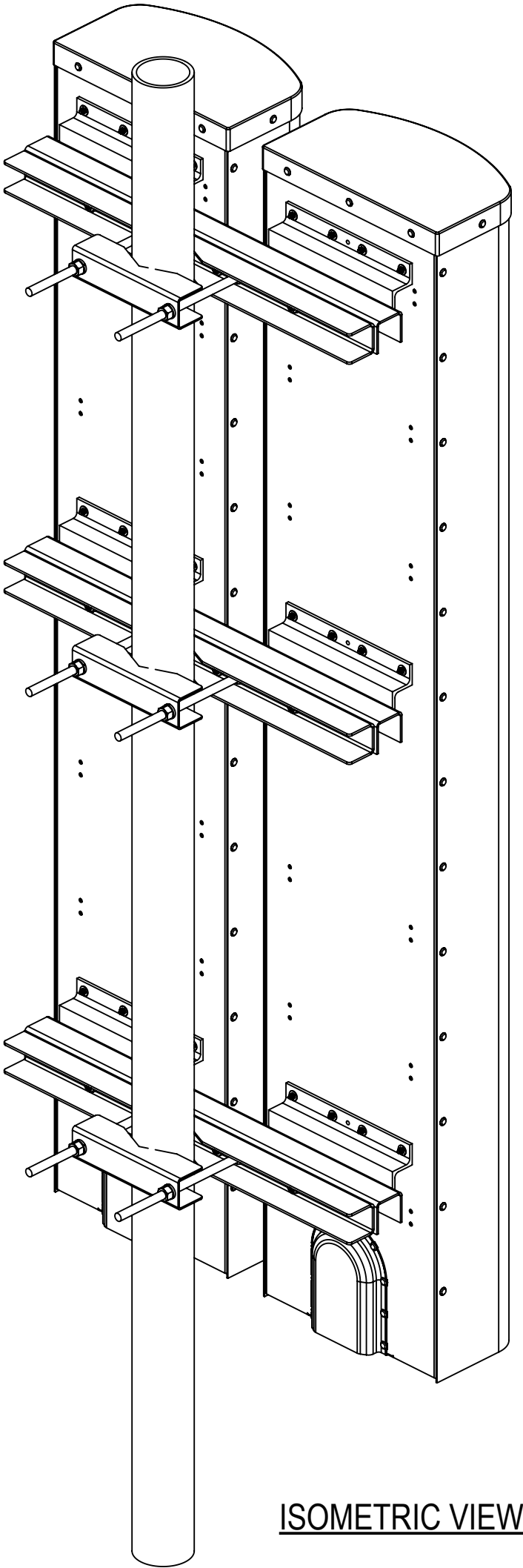
ITEM NO.	PART NUMBER	DESCRIPTION	QTY.
1	28000013	TRX-6345-634M-634M MOUNTING BRACKET	3
2	H04389	OUTER MOUNTING BRACKET	3
3	37410005	1/2-13 X 1 HHCS (GALV.)	36
4	39800613	WASHER - LOCK GALV 1/2	47
5	37210012	WASHER - GALV 1/2	47
6	37310012	NUT-HHCS GALV 1/2	53
7	37410011	1/2-13 X 11 STUD, GALV.	6
8	38141278	BRACKET SHORT	3
11	22191500-P4	Z-BRACKET ASSEMBLY	6


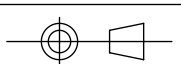


MKS09P07TWIN
DUAL ANTENNA POLE MOUNT
(A copy of these instructions to be included in each mounting kit box at manufacturer)

Note: Tighten 1/2" hardware to 37 ft lbs (50 Nm) torque except as noted below.

1. Attach large pole brackets ① to outer mounting brackets ② using 1/2in. hardware.
 2. Secure threaded rod ⑦ to large pole brackets ①, through outer mounting bracket ② using 1/2in hardware.
 3. Attach assemblies, created using steps 1 and 2 to pole using short pole bracket ⑧ with threaded rods ⑦ previously attached to assembly.
 4. Repeat for remaining bracket assemblies.
 5. Raise one antenna ⑪ to pole, and reposition bracket assemblies according to mounting positions on the antenna.
 6. Secure antenna to all mounting assemblies using 1/2" hardware and tighten.
 7. Raise second antenna ⑪ to bracket assembly, and secure it with 1/2in. hardware and tighten.
- Tighten the 1/2" nuts attaching the short brackets at the mounting studs to 28 ft lbs (38 Nm) torque. Do NOT overtighten. Excessive torque loading will distort the pipe grip components.
8. Make all electrical connections and weatherproof with self-amalgamating tape.



UNLESS OTHERWISE SPECIFIED DIMENSIONS ARE IN MILLIMETERS ANGULAR: ±1 0 PLACE: ±0.5 1 PLACE: ±0.25 2 PLACE: ±0.15 INTERPRET DIM AND TOL PER ASME Y14.5-2009		NAME		DATE			1123 INDUSTRIAL DRIVE SW CONOVER, NC 28613 (828) 324-6971			
		DRAWN BY		bworley			8/25/2016		www.amphenol-antennas.com	
THIRD ANGLE PROJECTION		CHECKED BY						TITLE: KIT, DUAL ANTENNA POLE MOUNT		
		ENG APPR.		jcarson		04/24/2014				
DO NOT SCALE DRAWING		PROPRIETARY AND CONFIDENTIAL THE INFORMATION CONTAINED IN THIS DRAWING IS THE SOLE PROPERTY OF AMPHENOL ANTENNA SOLUTIONS. ANY REPRODUCTION IN PART OR AS A WHOLE WITHOUT THE WRITTEN PERMISSION OF AMPHENOL ANTENNA SOLUTIONS IS PROHIBITED.								
MATERIAL: FINISH:										
TITLE BLOCK IN ACCORDANCE WITH ASME Y14.1M-2012		SIZE	C	DESIGNED USING	SOLIDWORKS	DWG. NO.	MKS09P07TWIN		REV	1
		SCALE: NONE		WEIGHT (Kg)		29430.47		SHEET		1 OF 1