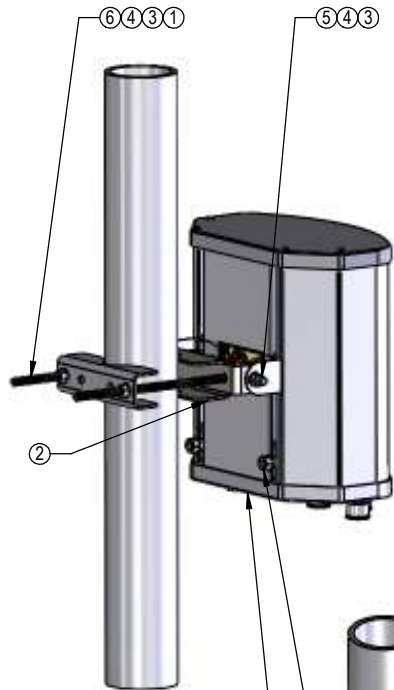
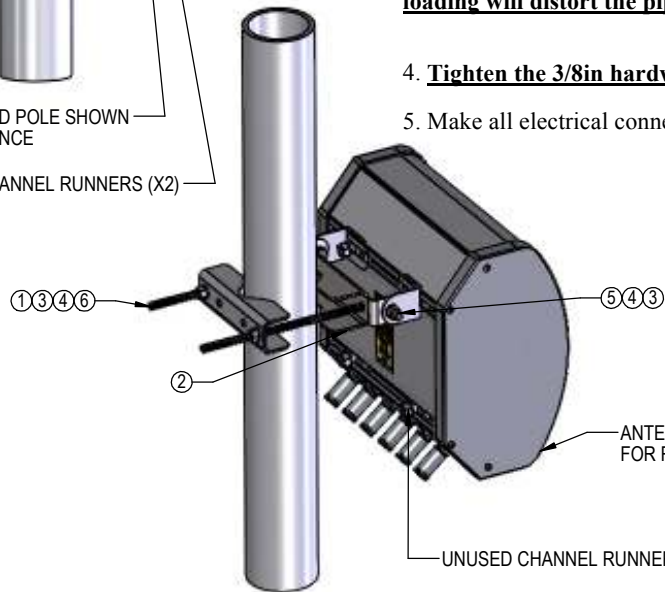


D  
C  
B  
A



ANTENNA AND POLE SHOWN  
FOR REFERENCE

UNUSED CHANNEL RUNNERS (X2)



ANTENNA AND POLE SHOWN  
FOR REFERENCE

UNUSED CHANNEL RUNNERS (X2)

**VIEWS OF THE TWO DIFFERENT ANTENNA CONFIGURATIONS**  
**NOTE: CONNECTORS ON ANTENNAS ALWAYS FACE DOWN!**

## MKS09P05

### 1 Point Mounting Instructions

(A copy of these instructions to be included in each mounting kit box at manufacturer)

1. For antenna configuration shown at LEFT with DIN connectors in end plate: Attach the antenna to the interface bracket ⑦ using two of the provided channel runners. Attachment points on the antenna must be approx. equal distance from top and bottom end caps of the antenna,

1A. For antenna configuration shown at RIGHT with mini-DIN connectors in chassis: Attach the antenna to the interface bracket ⑦ using two of the provided channel runners. Attachment points on the antenna must be approx. equal distance from left and right sides of the antenna, spaced 152.5mm apart.

**NOTE: CONNECTORS ALWAYS FACE DOWN!**

2. Assemble the front pipe grip ②, to the interface bracket ⑦ using 3/8in locking hardware.

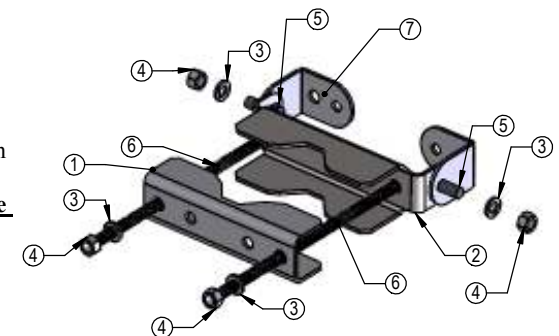
3. Assemble rear pipe grip ① with one 9in bolt ⑥ to the front pipe grip ②. Raise antenna to pipe. Insert second 9in bolt through front pipe grip ② and tighten to pipe.

**Tighten the 9in bolts to 11ft lbs (15Nm). Do NOT Overtighten. Excessive torque loading will distort the pipe grip components.**

4. **Tighten the 3/8in hardware to 15 ft-lbs (20Nm).**

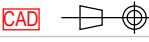
5. Make all electrical connections and weatherproof with self-amalgamating tape.

ITEM NO.	PART NUMBER	DESCRIPTION	QTY.
1	251-445-9-029	PIPE GRIP, REAR	1
2	251-445-9-006	PIPE GRIP WITH ELEVATION	1
3	730-308-1-601	3/8 LW HDG	4
4	684-222-1-623	3/8-16 HEX NUT HDG	4
5	665-016-1-602	Screw, 3/8-16 x 1.00, HHCS	2
6	H03601	SCREW, 3/8-16 X 9.00in HHCS HDG	2
7	251-445-9-007	INTERFACE BRACKET, NARROW	2



**BRACKET MOUNTING DETAIL**  
**EXPLODED VIEW**

REVISIONS				
REV.	DESCRIPTION	ECN	BY	DATE
A	REPLACE 665-112-1-012 WITH H03601	336	BJW	10/21/2015

<b>THIRD ANGLE PROJECTION</b> 		NAME	DATE
DRAWN		bworley	10/21/2015
ENG APPR.		jcarson	10/29/2015
MFG APPR.			
Q.A. APPR.			
<b>PROPRIETARY AND CONFIDENTIAL</b>		THE INFORMATION CONTAINED IN THIS DRAWING IS THE SOLE PROPERTY OF AMPHENOL ANTENNA SOLUTIONS. ANY REPRODUCTION IN PART OR AS A WHOLE WITHOUT THE WRITTEN PERMISSION OF AMPHENOL ANTENNA SOLUTIONS IS PROHIBITED.	
DIMENSIONS ARE IN MILLIMETERS UNLESS NOTED OTHERWISE		AMPHENOL ANTENNA SOLUTIONS 1123 Industrial Drive SW Conover, NORTH CAROLINA 28613 WWW.AMPHENOL-ANTENNAS.COM (828) 324-6971	
ANGULAR: NO PLACE ±1° ONE PLACE ±0.5° TWO PLACE ±0.2°		TITLE: <b>MOUNTING KIT 1-POINT</b>	
INTERPRET GEOMETRIC TOLERANCING PER: ASME Y14.41-2003		SIZE DWG. NO.	REV
MATERIAL		<b>B</b>	<b>MKS09P05</b>
FINISH		SCALE: NTS	A
DO NOT SCALE DRAWING		SHEET 1 OF 1	



DATE: 11/19/2015

C

B

A