

REVISIONS			
REV.	DESCRIPTION	DATE	REV BY
B	ECN#123: REVISED AND CREATED NEW DRW	4/16/2014	RAW

MKS09P04
LARGE ANTENNA POLE MOUNT
(A copy of these instructions to be included in each mounting kit box at manufacturer)

Note: Tighten 1/2" hardware to 37 ft lbs (50 Nm) torque except as noted below.

1. Attach the studs (3) to wide mounting brackets (1) using the provided 1/2" Nuts, Washers, and Lock Washers. Position the studs such that no more than 5/8" protrudes above the mounting bracket.

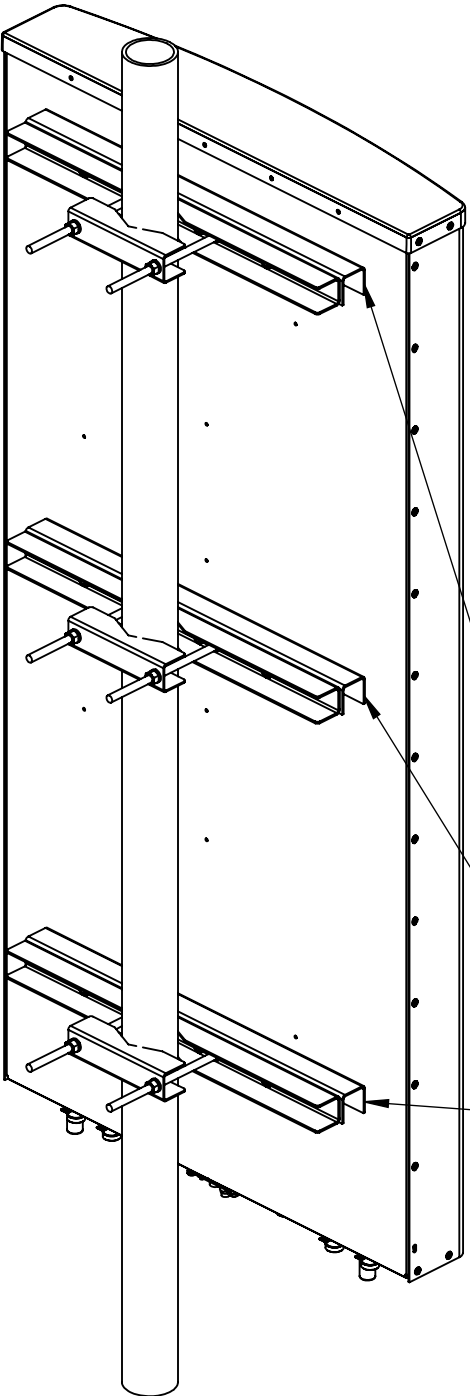
2. Attach the studs/bracket assemblies created in step 1 above to the outer mounting brackets of the antenna using the provided 1/2" Hex Head Cap Screws, Washers, Lock Washers, and Nuts.

4. Raise antenna to pipe. Attach the short brackets (2) to the mounting studs (3) in each assembly using 1/2" Lock Washers and Nuts..

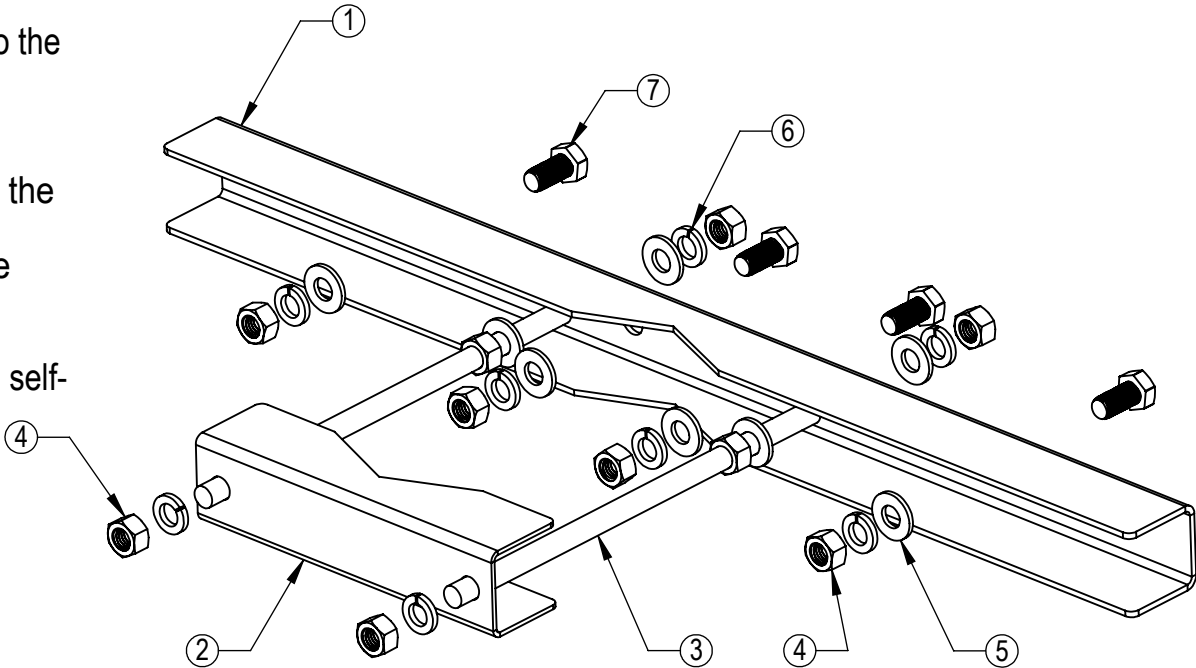
Tighten the 1/2" nuts attaching the short brackets at the mounting studs to 28 ft lbs (38 Nm) torque. Do NOT overtighten. Excessive torque loading will distort the pipe grip components.

5. Make all electrical connections and weatherproof with self-amalgamating tape.

BILL OF MATERIAL			
ITEM NO.	PART NUMBER	DESCRIPTION	QTY.
1	28000013	TRX-6345-634M-634M MOUNTING BRACKET	3
2	38141278	BRACKET SHORT	3
3	37410011	1/2-13 X 11 STUD, GALV.	6
4	37310012	NUT-HHCS GALV 1/2	30
5	37210012	WASHER - GALV 1/2	24
6	39800613	WASHER - LOCK GALV 1/2	24
7	37410005	1/2-13 X 1 HHCS (GALV.)	12



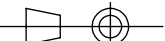
OUTSIDE MOUNTING BRACKET
(PART OF ANTENNA)



BRACKET MOUNT DETAIL

ISOMETRIC VIEW



THIRD ANGLE PROJECTION		NAME		DATE		AMPHENOL ANTENNA SOLUTIONS 1123 Industrial Drive SW Conover, NORTH CAROLINA 28613 WWW.AMPHENOL-ANTENNAS.COM (828) 324-6971	
<div>CAD</div> <div></div>		DRAWN		RAW		04-08-14	
DIMENSIONS ARE IN MILLIMETERS UNLESS NOTED OTHERWISE ANGULAR: ±1 NO PLACE ±0.5 ONE PLACE ±0.25 TWO PLACE ±0.15		CHECKED				TITLE: LARGE ANTENNA POLE MOUNTING KIT	
		ENG APPR.					
		MFG APPR.					
		Q.A.					
INTERPRET GEOMETRIC TOLERANCING PER: ASME Y14.41-2003		PROPRIETARY AND CONFIDENTIAL THE INFORMATION CONTAINED IN THIS DRAWING IS THE SOLE PROPERTY OF AMPHENOL ANTENNA SOLUTIONS. ANY REPRODUCTION IN PART OR AS A WHOLE WITHOUT THE WRITTEN PERMISSION OF AMPHENOL ANTENNA SOLUTIONS IS PROHIBITED.					
MATERIAL N/A		SIZE		DWG. NO.		REV	
FINISH N/A		B		MKS09P04		B	
DO NOT SCALE DRAWING		SCALE: NTS				SHEET 1 OF 1	