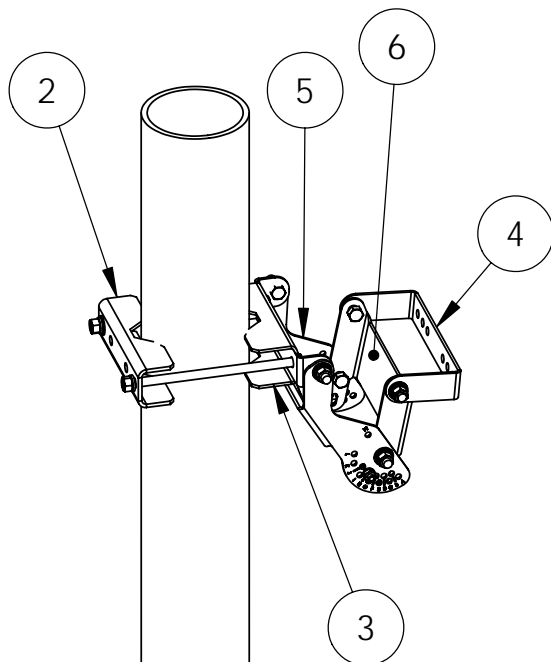


# MKS05T03

## WBX/PCSS Antenna

### Scissor Downtilt Mounting Kit Installation Instructions



1. Attach the antenna to the **interface brackets(4)** using the provided antenna mounting holes. **Hardware is provided in the back of the antenna. (Note: this hardware is metric threads and must be kept separate from the loose mounting kit hardware supplied in the plastic bag.)**

2. Assemble the **interface brackets(4)** to **scissor brackets (5&6)** on top half with 3/8" locking hardware. Then attach the **pipe grip with mounting tabs.(3)** to scissor bracket assembly as shown.

Attach the other **pipe grip with elev.(3)** to bottom **interface brackets(4)** with 3/8" locking hardware.

3. Assemble **rear pipe grip(2)** with one bolt to front **pipe grip with mounting tabs.(3)**. Raise antenna to pipe. Install second bolt in pipe grip assembly and tighten to pipe. Tighten pipe grip hardware to 15Nm (11ft lbs.)

|                  |                | Antenna Model |          |          |          |          |           |           |           |           |           |
|------------------|----------------|---------------|----------|----------|----------|----------|-----------|-----------|-----------|-----------|-----------|
|                  |                | WBX           |          |          |          |          | PCSS      |           |           |           |           |
| Hole Designation |                | WBXxxx08      | WBXxxx10 | WBXxxx14 | WBXxxx17 | WBXxxx20 | xxx-06-XX | xxx-10-XX | xxx-13-XX | xxx-16-XX | xxx-19-XX |
| A                | Downtilt Angle | 0.0           | 0.0      | 0.0      | 0.0      | 0.0      | 0.0       | 0.0       | 0.0       | 0.0       | 0.0       |
| B                |                | 1.3           | 1.0      | 0.7      | 0.6      | 0.5      | 1.6       | 1.0       | 0.8       | 0.6       | 0.5       |
| C                |                | 2.6           | 1.9      | 1.4      | 1.2      | 1.1      | 3.1       | 2.0       | 1.6       | 1.3       | 1.1       |
| D                |                | 3.8           | 2.9      | 2.1      | 1.8      | 1.6      | 4.7       | 3.1       | 2.3       | 1.9       | 1.6       |
| E                |                | 5.1           | 3.8      | 2.8      | 2.4      | 2.1      | 6.2       | 4.1       | 3.1       | 2.5       | 2.1       |
| F                |                | 6.4           | 4.8      | 3.4      | 2.9      | 2.6      | 7.8       | 5.1       | 3.9       | 3.2       | 2.7       |
| G                |                | 7.7           | 5.7      | 4.1      | 3.5      | 3.2      | 9.4       | 6.1       | 4.7       | 3.8       | 3.2       |
| H                |                | 8.9           | 6.7      | 4.8      | 4.1      | 3.7      | 10.9      | 7.2       | 5.4       | 4.4       | 3.7       |
| I                |                | 10.2          | 7.6      | 5.5      | 4.7      | 4.2      | 12.5      | 8.2       | 6.2       | 5.1       | 4.3       |
| J                |                | 11.5          | 8.6      | 6.2      | 5.3      | 4.7      | 14.1      | 9.2       | 7.0       | 5.7       | 4.8       |
| K                |                | 12.8          | 9.5      | 6.9      | 5.9      | 5.3      | 15.6      | 10.2      | 7.8       | 6.3       | 5.3       |
| L                |                | 14.1          | 10.5     | 7.6      | 6.5      | 5.8      | 17.2      | 11.3      | 8.5       | 7.0       | 5.9       |
| M                |                | 15.4          | 11.4     | 8.3      | 7.1      | 6.3      | 18.8      | 12.3      | 9.3       | 7.6       | 6.4       |

4. Using the above table, position the antenna in desired downtilt position. After positioning install the 5/16 locking hardware on both sides.

**Tighten all 5/16" hardware to 15Nm (11ft lbs)**  
**Tighten the 3/8" hardware to 20Nm (15 ft-lbs)**  
**Tighten the M8 hardware to 20Nm (15 ft-lbs)**

5. Make all electrical connections and weatherproof with self-amalgamating tape.

JAYBEAM Wireless

#### PROPRIETARY AND CONFIDENTIAL

THE INFORMATION CONTAINED IN THIS DRAWING IS THE SOLE PROPERTY OF JAYBEAM WIRELESS. ANY REPRODUCTION IN PART OR AS A WHOLE WITHOUT THE WRITTEN PERMISSION OF JAYBEAM WIRELESS IS PROHIBITED.

|                      |          |              |  |
|----------------------|----------|--------------|--|
| NAME                 | DATE     |              |  |
| DRAWN                | LWH      | 01-12-06     |  |
| CHECKED              |          |              |  |
| ENG APPR.            |          |              |  |
| MFG APPR.            |          |              |  |
| Q.A.                 |          |              |  |
| COMMENTS:            |          |              |  |
| DO NOT SCALE DRAWING |          |              |  |
| SIZE                 | DWG. NO. | REV.         |  |
| A                    | I-10013  | A            |  |
|                      |          | SHEET 1 OF 1 |  |

SCISSOR-TILT  
MOUNTS