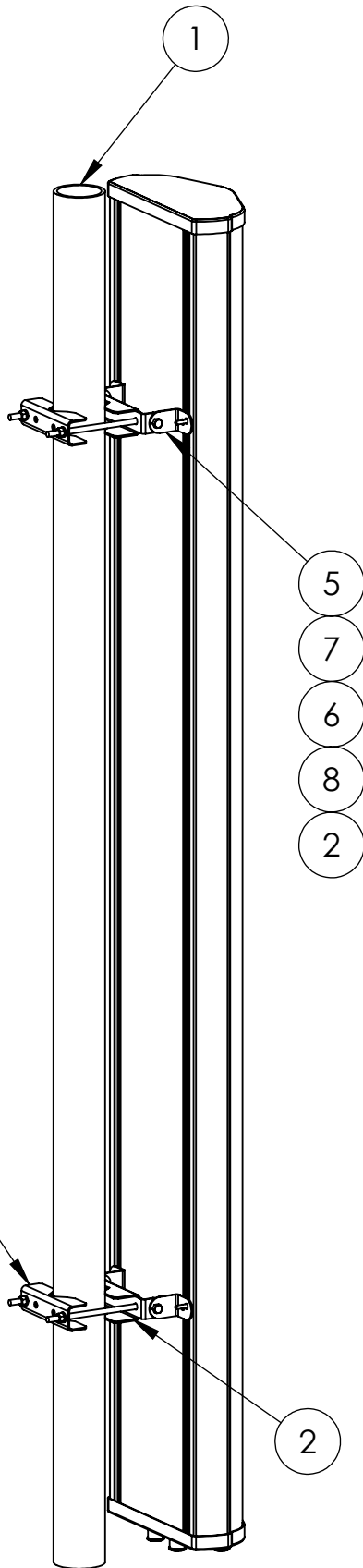


Fixed Tilt Mounting Kit Installation Instructions



1. For pipe mounting of antenna. Attach the **antenna(example shown)** to the **interface brackets (5)** using the provided channel runners at the labeled antenna mounting points.

2. Assemble the **pipe grip with elevation(2)** to the **interface brackets(5)** with 3/8" locking hardware.

3. Assemble **rear pipe grip(4)** with one **7"bolt(3)** to the pipe grip with elev. Insert second 7" bolt through **pipe grip with elevation(2)** and place nut finger tight on the end of it without attaching the **rear pipe grip(4)**. Raise **antenna** to pipe(1). Install second **7"bolt(3)** in rear pipe grip and tighten to pipe.

Tighten the 7" bolts to 15Nm (11ft lbs.) Do NOT Overtighten. Excessive torque loading will distort the pipe grip components.

4. **Tighten all other 3/8" hardware to 20Nm (15 ft-lbs).**

5. Make all electrical connections and weatherproof with self-amalgamating tape.



PROPRIETARY AND CONFIDENTIAL

THE INFORMATION CONTAINED IN THIS DRAWING IS THE SOLE PROPERTY OF JAYBEAM WIRELESS. ANY REPRODUCTION IN PART OR AS A WHOLE WITHOUT THE WRITTEN PERMISSION OF JAYBEAM WIRELESS IS PROHIBITED.

	NAME	DATE
DRAWN	SZ	04/08/08
CHECKED		
ENG APPR.		
MFG APPR.		
Q.A.		

COMMENTS:

DO NOT SCALE DRAWING

**FIXED TILT
MOUNTS**

SIZE	DWG. NO.	REV.
A	MKS04P01	A
		SHEET 1 OF 1