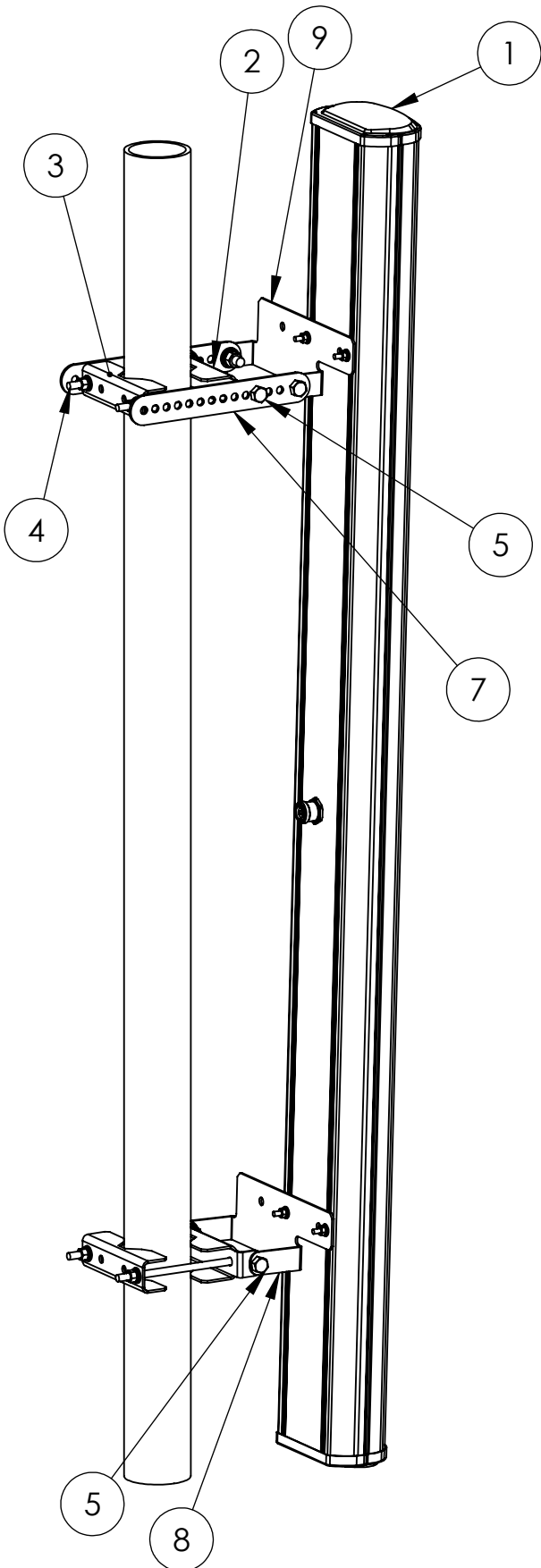


MKS02T10
Mounting Kit, Offset Bar Tilt PCSX/PCSA
 Instructions:



1. Attach the **antenna(1)** to the **interface brackets (top)(9) and (lower)(8)** using the provided antenna mounting channel runners. Adjust the brackets to ensure that they are perpendicular to the antenna and spaced one meter (39-3/8") apart, approx. equal distance from top and bottom of the antenna (use placement guide labels on antenna when provided) with a **maximum distance of 14" between the lower pivot point and the bottom of the antenna.**

2. Assemble the **interface brackets (8 & 9)** to **bartilt adjuster bars (7)** with 3/8" locking hardware. The hole on the interface end has the longest spacing distance from the next hole. Right side interface bracket mounts on the inside of the bartilt adjuster bar and the left side bracket mounts on the outside of the adjuster bar as shown. Holes on bartilt will downtilt antenna one degree per hole. The first hole is 0 degrees of tilt.

3. Attach the **bartilt bars (7)** to the upper **pipe grip with elev. (2)** with 3/8" locking hardware.

Attach **lower interface brackets (8)** on to lower **pipe grip with elev.(2)** with 3/8" locking hardware.

4. Assemble **rear pipe grip (3)** with one bolt to **pipe grip with elev.(2)** at upper and lower locations. Raise antenna to pipe. Install second bolt in pipe grip assembly and tighten to pipe. Tighten to 15Nm (11 ft lbs.)

5. Tighten the 3/8" hardware to 20Nm (15 ft-lbs).

6. Make all electrical connections and weatherproof with self-amalgamating tape.

NOTE: LONGER TAB ON LOWER INTERFACE BRACKET



PROPRIETARY AND CONFIDENTIAL
 THE INFORMATION CONTAINED IN THIS DRAWING IS THE SOLE PROPERTY OF JAYBEAM WIRELESS. ANY REPRODUCTION IN PART OR AS A WHOLE WITHOUT THE WRITTEN PERMISSION OF JAYBEAM WIRELESS IS PROHIBITED.

	NAME	DATE	JAYBEAM WIRELESS 730 21st STREET DRIVE SE HICKORY, NORTH CAROLINA 28602 WWW.JAYBEAMWIRELESS.COM		
DRAWN	SZ	09/15/08			
CHECKED			OFFSET BAR, TILT MOUNTING		
ENG APPR.					
MFG APPR.					
Q.A.					
COMMENTS:			SIZE	DWG. NO.	REV.
DO NOT SCALE DRAWING			A	MKS02T10	A
					SHEET 1 OF 1