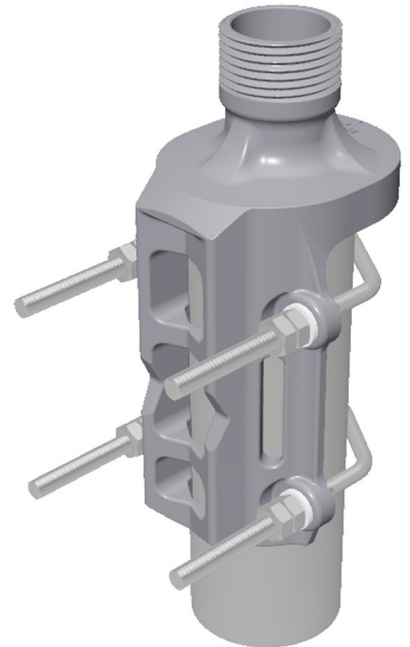


LW-SS-1

Features

- Using the LW-SS-1 universal mast mounting clamp, all antennas specifically designed for mounting on a 1" water pipe can be mounted on any kind of horizontal or vertical supporting mast tube, as long as the outer diameter of the tube is within 16 to 54 mm (0.6 to 2.1 in)
- The mounting bracket is made of stainless steel, which makes it ideal for marine environments
- Within the marine sector, the 1" water pipe mounting system for antennas has gained worldwide acceptance. The antennas are equipped with a revolving nut, which fits 1" RG (G1" - 11) threaded water pipes
- The construction of the clamp makes it possible to run the download cable either along the inside or on the outside of the mast tube
- Available as ATEX version, when equipotential bonding is not obtained through the mounting bracket and the need for a grounding kit is present
- Using the GP adaptor (to be ordered separately), the LW-SS-1 can be used for GP antennas with GP heads
- The LW-SS-1 mounting clamp is part of a family of different mounting clamps for 1" pipe-mount antennas. All are listed below. The majority of installations can be made utilizing the LW-SS-1 or one of these accessory items



ORDERING OPTIONS Select from the following ordering options

MODEL NUMBER	Product Number	Description	Shipping Weight
LW-SS-1	110000394	Universal stainless steel mounting clamp	TBD
LW-SS-1-EX	115000102	Universal stainless steel mounting clamp with ATEX grounding kit included	TBD

ACCESSORIES

MODEL NUMBER	Product Number	Shipping Weight
GP Adaptor	100000679	TBD

MECHANICAL SPECIFICATIONS

Dimensions		mm (in)	Refer to drawing following page
Net Weight		kg (lbs)	Approx. 0.5 (1.2)
Mounting Hardware Material		---	Mounting bracket: Stainless acid-proof steel (AiSi 316L) U-bolts and fittings: Stainless steel (AiSi 316L)
Mounting		---	On 16-54 mm (0.6 to 2.1 in) diameter mast tube
Packaging Information	Shipping Weight	kg (lbs)	TBD
	Packing Dimensions	mm (in)	TBD
	Shipping Comment	---	---

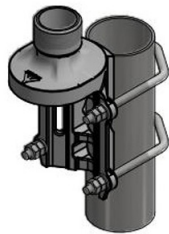
LW-SS-1

INSTALLATION DETAILS

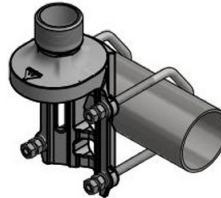
Mast Tube
Ø42-54 mm (1.7-2.1 in)



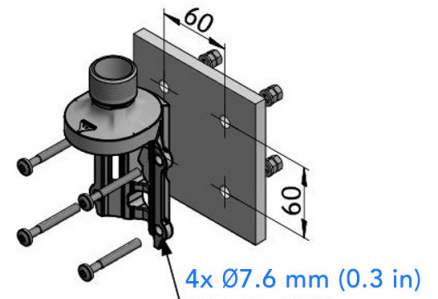
Mast Tube
Ø16-54 mm (0.6-2.1 in)



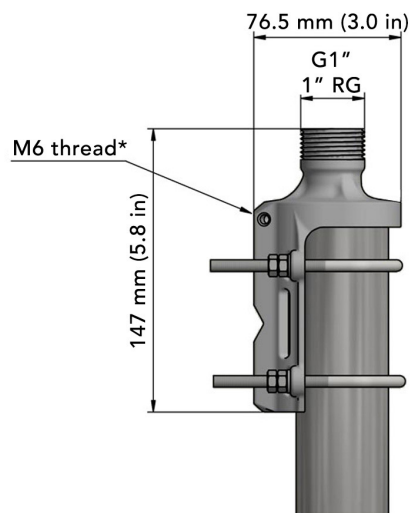
Mast Tube
Ø16-54 mm (0.6-2.1 in)



Bolts for wall mounting
not included

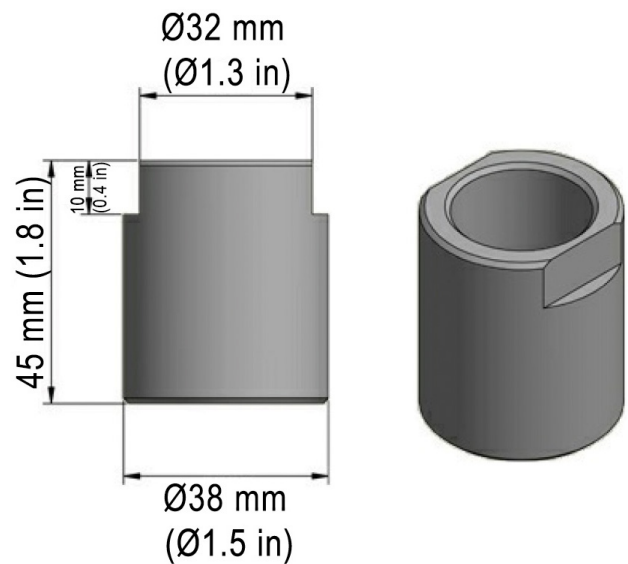


MOUNTING DETAILS



*Only available on the LW-SS-1-EX

GP ADAPTOR



ATEX GROUNDING KIT



LW-SS-1 WITH GP ADAPTOR

