

ETP0750

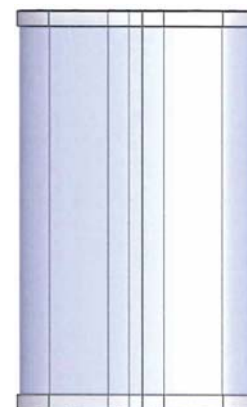
Non-Working Antenna Form, 750 mm

ORDERING

This item must be ordered in multiples of three (3) units.

MECHANICAL SPECIFICATIONS

Length		mm (in)	750 (29.5)
Width		mm (in)	432 (17.0)
Depth		mm (in)	175 (6.9)
Net Weight - Antenna Only		kg (lbs)	10 ± 1 (22.0 ± 2.2)
Mechanical Distance Between Mounting Points		mm (in)	500 (19.7)
Windload (EN 1991-1-4:2005 using Wind Tunnel Coefficients)	Calculation	km/h (mph)	150 (93.2)
	Frontal	N (lbf)	233 (52.4)
	Lateral	N (lbf)	122 (27.4)
	Rearside	N (lbf)	265 (59.6)
Survival Wind Speed		km/h (mph)	200 (124)
Radome Color		---	Gray RAL7035
Radome Material		---	Outdoor Fibreglass
Shipping	Each shipping box will contain three (3) units of ETP0750.		
	Shipping Dimensions (Length x Width x Depth)	mm (in)	2930 x 550 x 300 (115.4 x 21.7 x 11.8)
	Shipping Volume	m³ (ft³)	0.483 (17.1)



ACCESSORIES

All accessories are ordered separately unless otherwise indicated

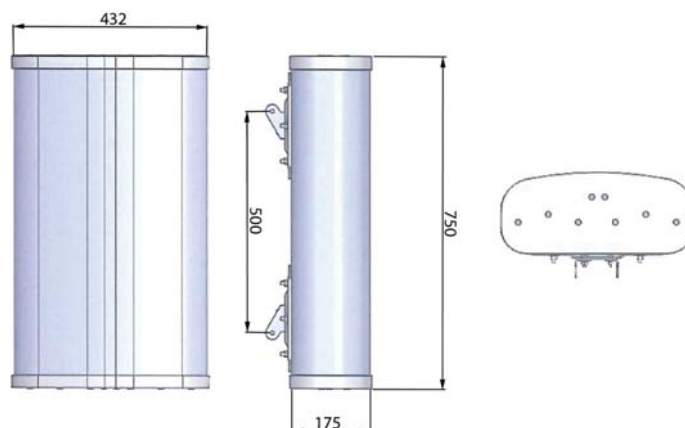
ITEM	MODEL NUMBER	WEIGHT
Brackets for pole Ø48 to Ø115 mm (Ø1.9 to Ø4.5 in) delivered as standard	0900181/00	3.4 kg (7.5 lbs)
Brackets for pole Ø70 to Ø150 mm (Ø2.8-Ø5.9 in) optional	0900182/00	3.9 kg (8.6 lbs)
Kit to add mechanical tilt (0° to 10°) to above brackets optional	0900397/00	3.0 kg (6.6 lbs)

INSTALLATION

Please read all installation notes before installing this product.



Always attach the antenna by all mounting points.



Quoted performance parameters are provided to offer typical, peak or range values only and may vary as a result of normal testing, manufacturing and operational conditions. Extreme operational conditions and/or stress on structural supports is beyond our control. Such conditions may result in damage to this product. Improvements to products may be made without notice.