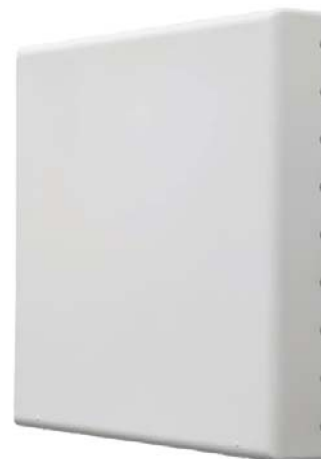


DCS43PA05F28-s

Dual Band | Planar | X-Pol | 35° / 33° | 13.9 / 14.3 dBi | Fixed Tilt

- Dual band planar antenna with fixed electrical downtilt
- Ideal for Point-to-Point applications



| Electrical Characteristics | | | | | | | |
|-----------------------------------|----------------------------------|----------|---------------|----------------------|-----------|-----------|-----------|
| Frequency Bands (MHz) | 698-960 MHz | | 1695-2700 MHz | | | | |
| | 698-800 | 800-960 | 1695-1880 | 1850-1990 | 1920-2180 | 2300-2360 | 2400-2700 |
| Polarization | ±45° | | ±45° | | | | |
| Horizontal Beamwidth | 38° | 33° | 38° | 35° | 34° | 29° | 29° |
| Vertical Beamwidth | 17° | 17° | 17° | 17° | 17° | 17° | 17° |
| Gain | 13.1 dBi | 13.9 dBi | 12.4 dBi | 13.0 dBi | 13.2 dBi | 14.3 dBi | 14.4 dBi |
| Electrical Downtilt | 0° | | 0° | | | | |
| Impedance | 50Ω | | 50Ω | | | | |
| VSWR | 1.5 | | 1.5 | | | | |
| Front-to-Back Ratio | 28 dB | 30 dB | 30 dB | 30 dB | 30 dB | 30 dB | 30 dB |
| IM3 (2x20W carrier) | -153 dBc | | -153 dBc | | | | |
| Input Power | 200 W | | 200 W | | | | |
| Operating Temperature | -40° to +60° C (-40° to +140° F) | | | | | | |
| Connector(s) | 2 Ports / 4.3-10 / Female / Back | | | | | | |
| Mechanical Characteristics | | | | | | | |
| Dimensions Length x Width x Depth | 760 x 760 x 120 mm | | | 29.9 x 29.9 x 4.7 in | | | |
| Weight without Mounting Brackets | 18.0 kg | | | 39.7 lbs | | | |
| Environmental Characteristics | | | | | | | |
| Operating Temperature | -40° to +60° C | | | -40° to +140° F | | | |
| Operational Humidity | Up to 100% | | | | | | |
| Mounting Options | | | | | | | |
| Mounting Kit Included | | | | | | | |

Quoted performance parameters are provided to offer typical or range values only and may vary as a result of normal manufacturing and operational conditions. Extreme operational conditions and/or stress on structural supports is beyond our control. Such conditions may result in damage to this product. Improvements to product may be made without notice.