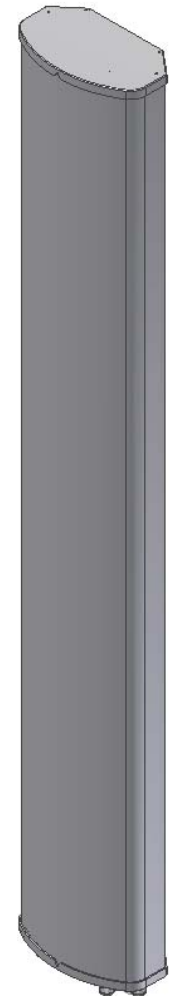


CX085X19x00

Single Band | Panel Antenna | X-Pol | 85° | 14.3 dBi | Variable Tilt

- Single band, X-Pol, variable tilt, panel antenna
- Part of Amphenol's UNIVERSAL series of antennas featuring consistent form factors for future-proofing
- Patented internal RET actuator adds no additional length to the antenna
- Features an adjustable mounting bracket channel for custom mounting in any situation




| Ordering Options | | Model Number | |
|--|---|--|----------------------|
| When ordering, replace “x” in the model number with one of the options listed below. | | | |
| Manual Electrical Tilt | | CX085X19M00 | |
| Remote Electrical Tilt AISG v2.0 / 3GPP | | CX085X19G00 | |
| Mounting bracket kits and other accessories are ordered separately. | | | |
| Electrical Characteristics | | 696-960 MHz | |
| Frequency Bands | | 696-806 MHz | 806-960 MHz |
| Polarization | | ±45° | |
| Horizontal Beamwidth | | 85° | 80° |
| Vertical Beamwidth | | 11° | 9.5° |
| Gain | | 13.5 dBi | 14.3 dBi |
| Electrical Downtilt | | 0-12° | |
| Impedance | | 50Ω | |
| VSWR | | < 1.5:1 | |
| Upper Sidelobe Suppression | | > 18 dB Typical | |
| Front-to-Back Ratio | | > 25 dB | |
| In-Band Isolation | | > 25 dB | |
| Isolation Between Ports | | > 25 dB | |
| IM3 (2x20W carrier) | | < -153 dBc | |
| Input Power | | (2x) 500 W | |
| Total Number of Connectors | | Antenna has 2 connectors located at the bottom | |
| Connectors Type | | 7/16-DIN Female | |
| Diplexed | | No | |
| Lightning Protection | | Direct Ground | |
| Operating Temperature | | -40° to +60° C (-40° to +140° F) | |
| Mechanical Characteristics | | | |
| Dimensions (Length x Width x Depth) | | 1906 x 305 x 180 mm | 79.0 x 12.0 x 7.1 in |
| Weight | Antenna Only | 12.6 kg | 27.8 lbs |
| | Antenna with Mounting Bracket Kit MKS09P02 | 16.7 kg | 36.8 lbs |
| | Antenna with Mounting Bracket Kit MKS09T02 | 19.0 kg | 41.9 lbs |
| Survival Wind Speed | | 241 km/hr | 150 mph |
| Wind Loads (160 km/hr or 100 mph) | Front | 707 N | 159 lbf |
| | Side | 419 N | 94 lbf |



Quoted performance parameters are provided to offer typical, peak or range values only and may vary as a result of normal testing, manufacturing and operational conditions. Extreme operational conditions and/or stress on structural supports is beyond our control. Such conditions may result in damage to this product. Improvements to products may be made without notice.

CX085X19x00

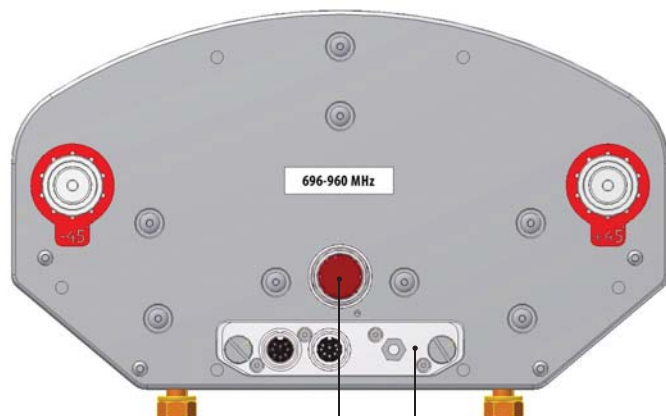
Single Band | Panel Antenna | X-Pol | 85° | 14.3 dBi | Variable Tilt

| Electrical Downtilt Control | | | | |
|--|--|---|----------------------|---------------|
| Electrical downtilt for each band can be controlled separately. Tilt indicator(s) are covered by removable transparent cap(s). | | | | |
| Manual Electrical Tilt (MET) Control | A colored knob at the end of the tilt indicator allows change of the tilt without need of a tool. The knob color is identical to the corresponding connector ring color. To access the knob, remove the cap by turning it counter-clockwise. It is re-installed by opposite rotation. Do not remove the transparent cap(s) from the antenna. | | | |
| Remote Electrical Tilt (RET) Control | The remote control of the electrical tilt is managed by a Multi-Device Control Unit (MDCU) inserted in the bottom of the antenna. A single module individually controls the tilt of each band (no need for daisy chain cables between the bands). This module does not add any additional length to the antenna. For RET control, the transparent caps must be in place and locked. The tilt angle indicators always remain visible and the antenna still has manual tilt control (manual override). Do not remove the transparent cap(s) from the antenna. | | | |
| Important Installation Instructions | <div>  <p>In order to operate RET control, the transparent caps covering the tilt adjustment indicators must be engaged and locked. Do not cut them from the antenna.</p> <p>Do not install the antenna with the connectors facing upward.</p> </div> | | | |
| Mounting Options | Part Number | Image | Fits Pipe Diameter | Weight |
| All mounting bracket kits are ordered separately unless otherwise indicated. Select from the options listed below. | | | | |
| 3-Point Mounting Bracket Kit | MKS09P02 |  | 50-115 mm 2.0-4.5 in | 4.1 kg 9 lbs |
| 3-Point Mounting & Downtilt Bracket Kit | MKS09T02 |  | 50-115 mm 2.0-4.5 in | 6.4 kg 14 lbs |

CX085X19x00

Single Band | Panel Antenna | X-Pol | 85° | 14.3 dBi | Variable Tilt

Bottom View of Antenna

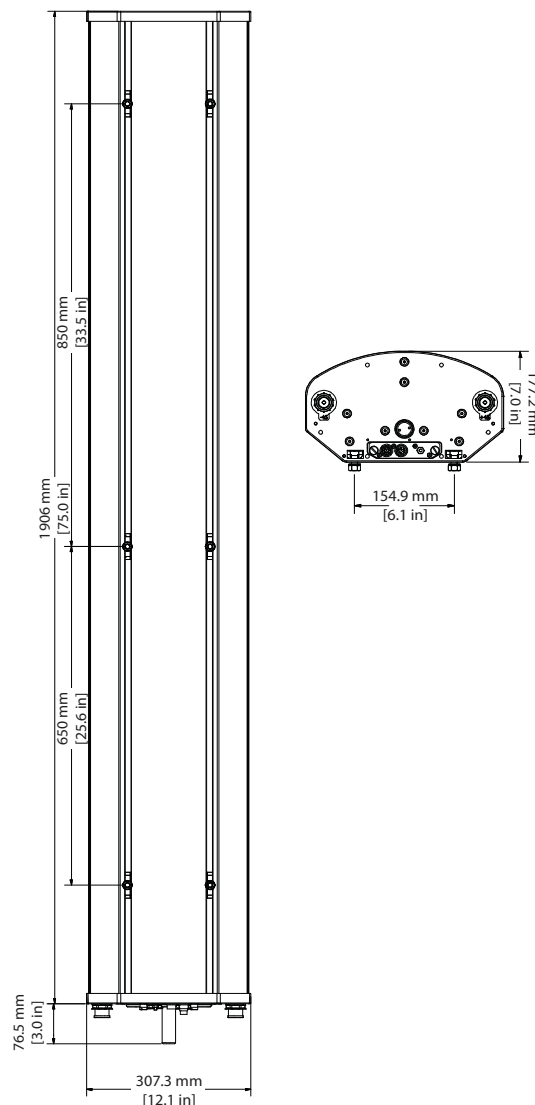


Tilt indicators covered by transparent cap.
Manual adjustment is accessed by removing the cap.
Knob color is the same as the connectors.



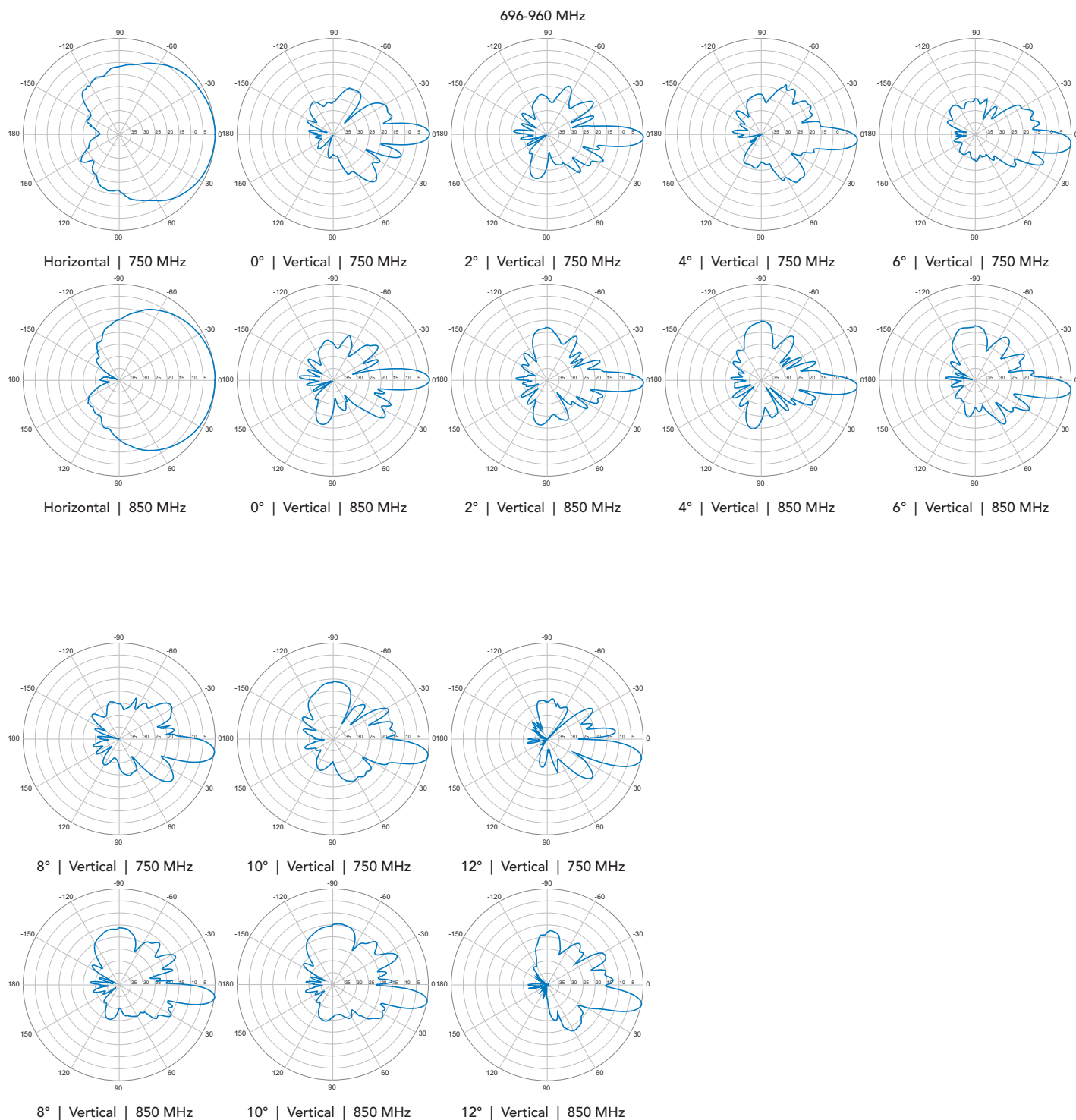
In order to operate RET control, the transparent cap covering the tilt adjustment indicator must be engaged and locked. Do not cut it from the antenna.

Dimensions



CX085X19x00

Single Band | Panel Antenna | X-Pol | 85° | 14.3 dBi | Variable Tilt



Quoted performance parameters are provided to offer typical, peak or range values only and may vary as a result of normal testing, manufacturing and operational conditions. Extreme operational conditions and/or stress on structural supports is beyond our control. Such conditions may result in damage to this product. Improvements to products may be made without notice.