

CX063X24x00

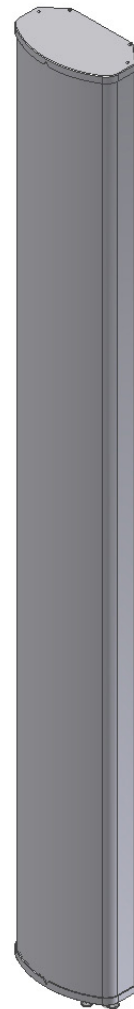
Single Band | Panel Antenna | X-Pol | 65° | 16.8 dBi | Variable Tilt

- Single band, 2-port panel antenna with variable electrical tilt
- Patented internal RET actuator adds no additional length to the antenna
- Overall length less than 96"

Ordering Options	Model Number
When ordering, replace "x" in the model number with one of the options listed below.	
Manual Electrical Tilt	CX063X24M00
Remote Electrical Tilt AISG v1.1	CX063X24R00
Remote Electrical Tilt AISG v2.0 / 3GPP	CX063X24G00

Mounting bracket kits and other accessories are ordered separately.


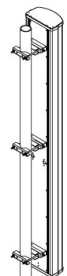

Electrical Characteristics		696-960 MHz	
Frequency Bands		696-806 MHz	806-960 MHz
Polarization		±45°	
Horizontal Beamwidth		70°	65°
Vertical Beamwidth		7.4°	6.9°
Gain		16.3 dBi	16.8 dBi
Electrical Downtilt		0-10°	
Impedance		50Ω	
VSWR		< 1.5:1	
Upper Sidelobe Suppression		> 18 dB Typical	
Front-to-Back Ratio		> 25 dB	
In-Band Isolation		> 25 dB	
IM3 (2x20W carrier)		< -153 dBc	
Input Power		500 W	
Total Number of Connectors		Antennas has 2 connectors located at the bottom	
Connectors Per Band, Type, Location	696-960 MHz	2 Connectors / 7/16-DIN Female / Bottom	
Lightning Protection		Direct Ground	
Operating Temperature		-40° to +60° C (-40° to +140° F)	
Mechanical Characteristics			
Dimensions (Length x Width x Depth)		2421 x 305 x 180 mm	95.3 x 12.0 x 7.1 in
Weight	Antenna Only	15.6 kg	34.5 lbs
	Antenna with Mounting Bracket Kit MKS09P02	19.8 kg	43.6 lbs
	Antenna with Mounting Bracket Kit MKS09T02	22.0 kg	48.6 lbs
Survival Wind Speed		241 km/hr	150 mph
Wind Loads (160 km/hr or 100 mph)	Front	898 N	202 lbf
	Side	531 N	120 lbf



Quoted performance parameters are provided to offer typical, peak or range values only and may vary as a result of normal testing, manufacturing and operational conditions. Extreme operational conditions and/or stress on structural supports is beyond our control. Such conditions may result in damage to this product. Improvements to products may be made without notice.

CX063X24x00

Single Band | Panel Antenna | X-Pol | 65° | 16.8 dBi | Variable Tilt

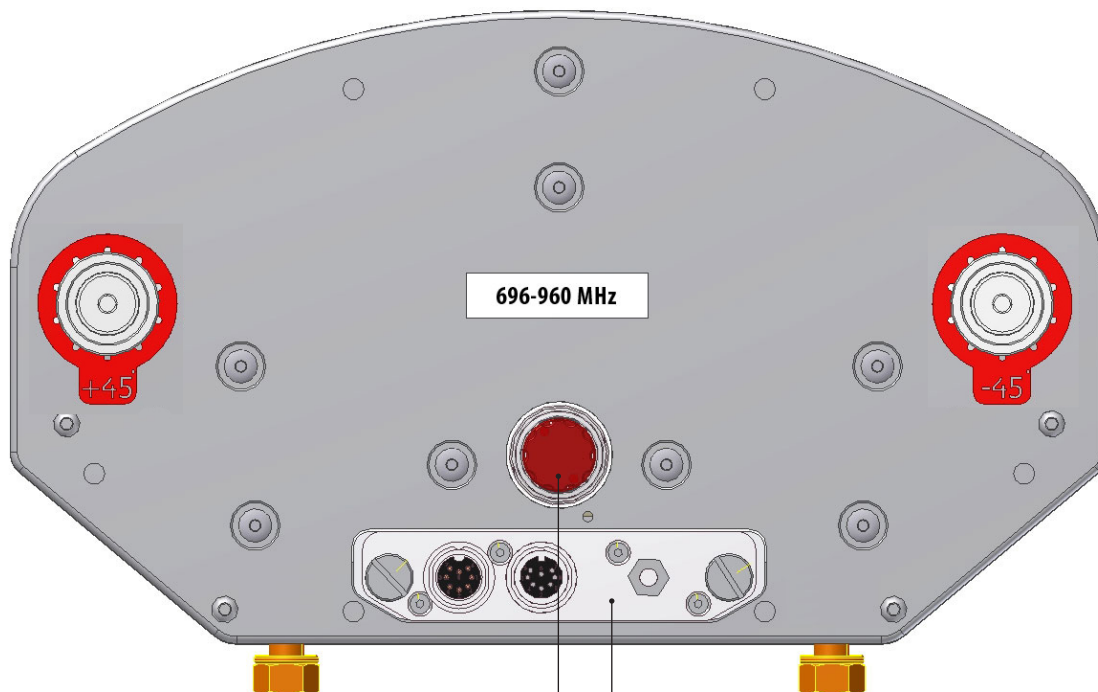
Electrical Downtilt Control				
Manual Electrical Tilt (MET) Control	A colored knob at the end of the tilt indicator allows change of the tilt without need of a tool. The knob color is identical to the corresponding connector ring color. To access the knob, remove the cap by turning it counter-clockwise. It is re-installed by opposite rotation. Do not remove the transparent cap(s) from the antenna.			
Remote Electrical Tilt (RET) Control	The remote control of the electrical tilt is managed by a Multi-Device Control Unit (MDCU) inserted in the bottom of the antenna. This module does not add any additional length to the antenna. For RET control, the transparent caps must be in place and locked. The tilt angle indicators always remain visible and the antenna still has manual tilt control (manual override).			
RET Module Part Number (one per antenna)	MDCU-A0000	For AISG v1.1 protocol. One unit included in CX063X24R00		
	MDCU-G0000	For 3GPP / AISG v2.0 protocol. One unit included in CX063X24G00		
Important Installation Instructions		In order to operate RET control, the transparent caps covering the tilt adjustment indicators must be engaged and locked. Do not cut them from the antenna.		
		Do not install the antenna with the connectors facing upward.		
Mounting Options	Part Number	Image	Fits Pipe Diameter	Weight
All mounting bracket kits are ordered separately unless otherwise indicated. Select from the options listed below.				
3-Point Mounting Bracket Kit	MKS09P02		50-115 mm 2.0-4.5 in	4.1 kg 9 lbs
3-Point Mounting & Downtilt Bracket Kit	MKS09T02		50-115 mm 2.0-4.5 in	6.4 kg 14 lbs

Quoted performance parameters are provided to offer typical, peak or range values only and may vary as a result of normal testing, manufacturing and operational conditions. Extreme operational conditions and/or stress on structural supports is beyond our control. Such conditions may result in damage to this product. Improvements to products may be made without notice.

CX063X24x00

Single Band | Panel Antenna | X-Pol | 65° | 16.8 dBi | Variable Tilt

Bottom View of Antenna



Location of the MDCU or MDDU
for RET Control (MDCU shown)

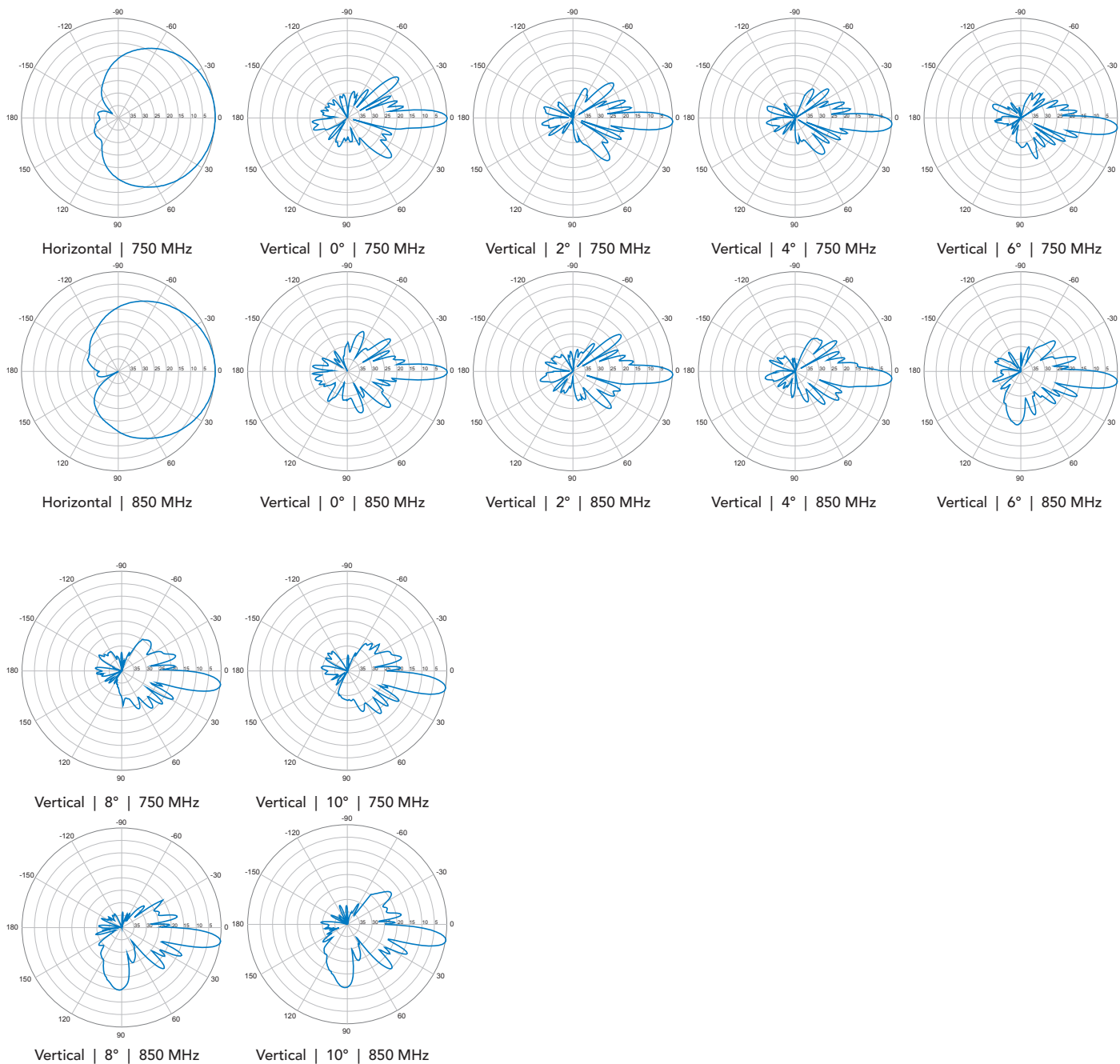
Tilt indicators covered by transparent caps.
Manual adjustment is accessed by removing
the caps. Knob colors are the same as the
connectors.



In order to operate RET control, the transparent caps covering the tilt adjustment indicators must be engaged and locked. Do not cut them from the antenna.

CX063X24x00

Single Band | Panel Antenna | X-Pol | 65° | 16.8 dBi | Variable Tilt



Quoted performance parameters are provided to offer typical, peak or range values only and may vary as a result of normal testing, manufacturing and operational conditions. Extreme operational conditions and/or stress on structural supports is beyond our control. Such conditions may result in damage to this product. Improvements to products may be made without notice.