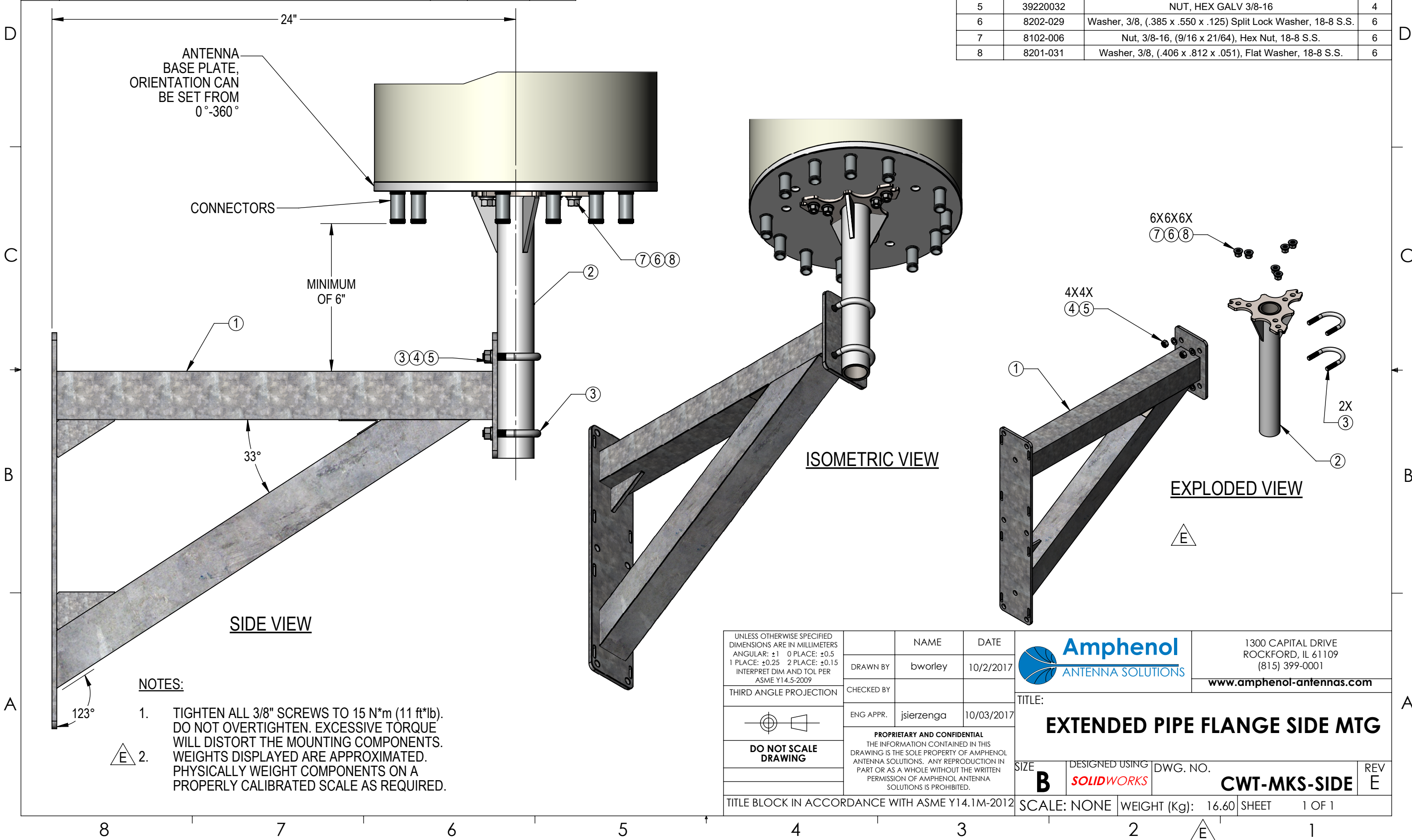



REVISIONS				
REV.	DESCRIPTION	ECN	DATE	REV BY
D	REPLACE SL80120 & 39220029 WITH 39220032 & 730-308-1-601	1076	10/2/2017	BJW
E	REVISED EXPLODED VIEW SO UPDATED APPROXIMATE WEIGHT OF MOUNTING KIT IS DISPLAYED-ADDED NOTE 2	2132	1/23/2024	SZ

ITEM NO.	PART NUMBER	DESCRIPTION	QTY.
1	H02308	WELDMENT, SMALL CELL EXTENDED MOUNT	1
2	H02306	WELDMENT, SMALL CELL MOUNT	1
3	H02347	Bolt 2" OD 3/8-16 x 1 1/4" Thread Galvanized	2
4	730-308-1-601	3/8 LW HDG	4
5	39220032	NUT, HEX GALV 3/8-16	4
6	8202-029	Washer, 3/8, (.385 x .550 x .125) Split Lock Washer, 18-8 S.S.	6
7	8102-006	Nut, 3/8-16, (9/16 x 21/64), Hex Nut, 18-8 S.S.	6
8	8201-031	Washer, 3/8, (.406 x .812 x .051), Flat Washer, 18-8 S.S.	6



UNLESS OTHERWISE SPECIFIED DIMENSIONS ARE IN MILLIMETERS ANGULAR: ±1 0 PLACE: ±0.5 1 PLACE: ±0.25 2 PLACE: ±0.15 INTERPRET DIM AND TOL PER ASME Y14.5-2009	NAME	DATE
THIRD ANGLE PROJECTION	DRAWN BY bworley	10/2/2017
	CHECKED BY	
	ENG APPR. jsierzenga	10/03/2017
DO NOT SCALE DRAWING	PROPRIETARY AND CONFIDENTIAL THE INFORMATION CONTAINED IN THIS DRAWING IS THE SOLE PROPERTY OF AMPHENOL ANTENNA SOLUTIONS. ANY REPRODUCTION IN PART OR AS A WHOLE WITHOUT THE WRITTEN PERMISSION OF AMPHENOL ANTENNA SOLUTIONS IS PROHIBITED.	

 <b>Amphenol</b> ANTENNA SOLUTIONS		1300 CAPITAL DRIVE ROCKFORD, IL 61109 (815) 399-0001 <b>www.amphenol-antennas.com</b>	
TITLE: <b>EXTENDED PIPE FLANGE SIDE MTG</b>			
SIZE <b>B</b>	DESIGNED USING <b>SOLIDWORKS</b>	DWG. NO. <b>CWT-MKS-SIDE</b>	REV <b>E</b>
SCALE: NONE		WEIGHT (Kg): 16.60	SHEET 1 OF 1