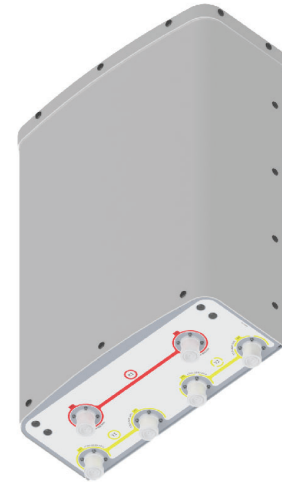


CUUX045X06F_{xy}00



Features

- Tri Band, fixed tilt panel antenna with 6 connectors
- Ultra-wide band performance
- Ideal solution for Small Cell applications

PRODUCT OVERVIEW	Frequency Range (MHz)	LOW	MID	
		696-960	1695-2700	1695-2700
	Array	■ R1	■ Y1	■ Y2
	Connector	1-2	3-4	5-6
	Polarization	XPOL	XPOL	XPOL
	Electrical Downtilt	0°	0°	
	Azimuth Beamwidth	45°		
	Total Connector Count	6 PORTS		
	Connector Type	7/16-DIN FEMALE		
	Dimensions	611 x 412 x 185 mm (24.1 x 16.2 x 7.3)		

ELECTRICAL SPECIFICATIONS Low Band

■ R1

Frequency Range	MHz	(1x) 696-960		
Frequency Sub-Range	MHz	696-806	806-960	
Polarization	---	±45°		
Gain	MAX	dBi	12.2	13.9
Azimuth Beamwidth (3 dB)	degrees	47°	37°	
Elevation Beamwidth (3 dB)	degrees	40.6°	30.8°	
Electrical Downtilt	degrees	(x) 0°		
Impedance	Ohms	50Ω		
VSWR	---	≤ 1.5:1		
Front-to-Back Ratio	dB	> 24		
Passive Intermodulation 3rd Order for 2x20 W Carriers	dBc	< -150		
Maximum Power Per Port	Watts	(2x) 500 W		
Isolation	Between Bands	dB	> 30	
	Between Ports	dB	≥ 25	

Quoted performance parameters are provided to offer typical, peak or range values only and may vary as a result of normal testing, manufacturing and operational conditions. Extreme operational conditions and/or stress on structural supports is beyond our control. Such conditions may result in damage to this product. Improvements to products may be made without notice.

CUUX045X06F_{xy}00

ELECTRICAL SPECIFICATIONS Mid Band

■ Y1 ■ Y2

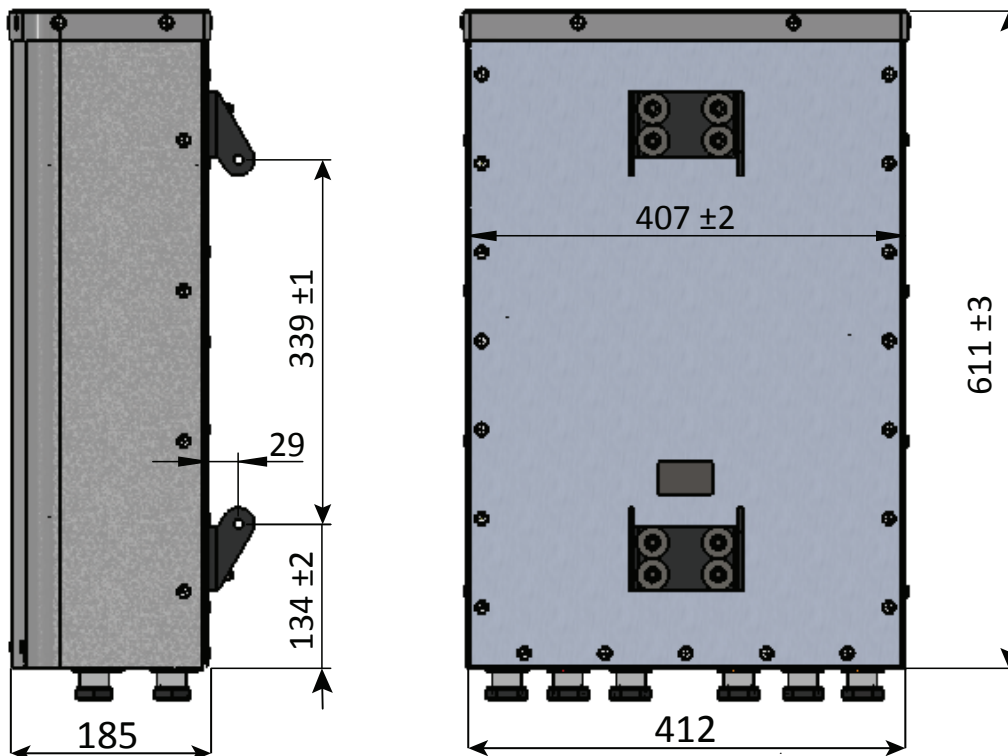
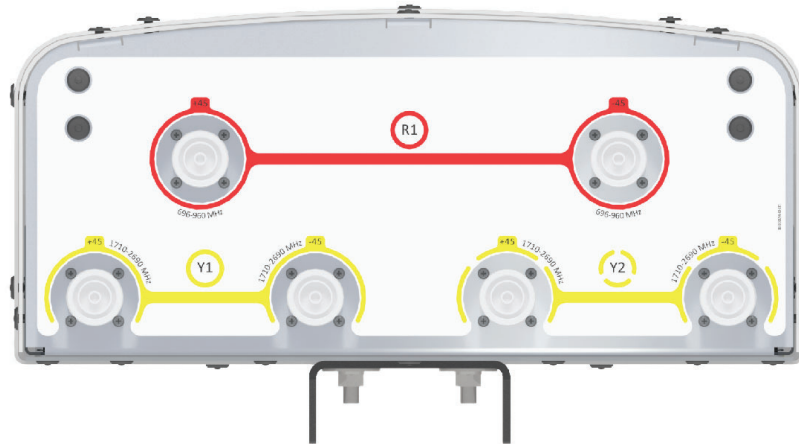
Frequency Range	MHz	(2x) 1695-2700				
Frequency Sub-Range	MHz	1695-1880	1850-1990	1920-2200	2300-2700	
Polarization	---	(2x) ±45°				
Gain	MAX	dBi	12.9	13.8	14.1	14.4
Azimuth Beamwidth (3 dB)	degrees		49°	45°	42°	38°
Elevation Beamwidth (3 dB)	degrees		24.8°	24.0°	23.0°	21.7°
Electrical Downtilt	degrees	(y) 0°				
Impedance	Ohms	50Ω				
VSWR	---	≤ 1.5:1				
Front-to-Back Ratio	dB	> 25				
Passive Intermodulation 3rd Order for 2x20 W Carriers	dBc	< -150				
Maximum Power Per Port	Watts	(4x) 300 W				
Isolation	Between Bands	dB	> 30			
	Between Ports	dB	≥ 25			

MECHANICAL SPECIFICATIONS

Antenna	Length	mm (in)	611 (24.1)
	Width	mm (in)	412 (16.2)
	Depth	mm (in)	185 (7.3)
Net Weight - Antenna Only		kg (lbs)	7.1 (15.7)
Windload	Calculation	km/h (mph)	160 (100)
	Frontal	N (lbf)	305 (68)
	Side	N (lbf)	135 (30)
Survival Wind Speed		km/h (mph)	241 (150)
Wind Area	Frontal	m ² (ft ²)	0.25 (2.7)
	Side	m ² (ft ²)	0.11 (1.2)
Connector	Type	---	7/16-DIN Female
	Quantity	---	6
	Position	---	Bottom
Radome Color		---	Grey
Operating Temperature		degrees	-40° to +60° C (-40° to +140° F)
Lightning Protection (Grounding Type)		---	Direct Ground

Quoted performance parameters are provided to offer typical, peak or range values only and may vary as a result of normal testing, manufacturing and operational conditions. Extreme operational conditions and/or stress on structural supports is beyond our control. Such conditions may result in damage to this product. Improvements to products may be made without notice.


CUUX045X06F_{xy}00



Quoted performance parameters are provided to offer typical, peak or range values only and may vary as a result of normal testing, manufacturing and operational conditions. Extreme operational conditions and/or stress on structural supports is beyond our control. Such conditions may result in damage to this product. Improvements to products may be made without notice.

CUUX045X06F_{xy}00

MOUNTING KITS The default mounting kit is included in the price of the antenna. Any other mounting kits are optional and must be ordered separately.

	MODEL NUMBER	DESCRIPTION	FITS PIPE DIAMETER	WEIGHT
DEFAULT MOUNTING KIT <i>Shipped as standard and included in the price of the antenna</i> 	0900181/00	2-Point Mounting Bracket Kit	48-115 mm (1.9-4.5 in)	3.4 kg (7.5 lbs)
DEFAULT MOUNTING KIT <i>Shipped as standard and included in the price of the antenna</i> <div style="text-align: center; font-size: 2em; font-weight: bold; color: gray;"> NO IMAGE AVAILABLE COMING SOON </div>	0900397/00	Kit to Add Mechanical Down-tilt [0°-10°]	----	3.0 kg (6.6 lbs)

ORDERING OPTIONS Select from the following ordering options

SELECT DEGREE OF ELECTRICAL DOWNTILT FOR EACH BAND		MODEL NUMBER
LOW BAND	MID BAND	
0°	0°	CUUX045X06F0000

Quoted performance parameters are provided to offer typical, peak or range values only and may vary as a result of normal testing, manufacturing and operational conditions. Extreme operational conditions and/or stress on structural supports is beyond our control. Such conditions may result in damage to this product. Improvements to products may be made without notice.