

C4UX065X06F_{xy}s4

Features

- Panel antenna for 4G/5G small cell applications
- 10 total connectors to service the 698-960 and 1695-2700 MHz bands
- Fixed tilt options



PRODUCT OVERVIEW	Frequency Range (MHz)	(1x) 698-960	(2x) 1695-2700	(2x) 1695-2700
	Array	■ R1	■ Y1, ■ Y2	■ Y3, ■ Y4
	Connector	2 PORTS	4 PORTS	4 PORTS
	Polarization	XPOL	XPOL	XPOL
	Azimuth Beamwidth (avg)	65°	65°	65°
	Electrical Downtilt	0°	2°, 4°, 6°	2°, 4°, 6°
	Maximum Continuous Power Per Port @ 50° C (122° F)	150 WATTS	125 WATTS	125 WATTS
	Maximum Total Continuous Power at 50° C (122° F)	1300 WATTS		
	Total Connector Count	10 PORTS		
	Connector Type	4.3-10 FEMALE		
Dimensions		589 x 306 x 178 mm (23.2 x 12.1 x 7.0)		
Radome Color Options		GREY		

ELECTRICAL SPECIFICATIONS

■ R1

Frequency Range		MHz	698-960	
Frequency Sub-Range		MHz	698-806	806-960
Polarization		---	±45°	
Gain	BASTA	dBi	9.9 ± 1.2	9.5 ± 0.7
	MAX	dBi	11.1	10.2
Azimuth Beamwidth (3 dB)		degrees	95.9° ± 10.5°	87.6° ± 10.8°
Elevation Beamwidth (3 dB)		degrees	34.9° ± 2.2°	32.2° ± 4.3°
Electrical Downtilt		degrees	(x) 0°	
Impedance		Ohms	50Ω	
VSWR		---	1.5:1	
Passive Intermodulation 3rd Order for 2x20 W Carriers		dBc	< -153	
Upper Sidelobe Suppression		dB	N/A	
Isolation	Intraband	dB	> 25	
	Interband	dB	> 28 same band; > 30 different band	

Quoted performance parameters are provided to offer typical, peak or range values only and may vary as a result of normal testing, manufacturing and operational conditions. Extreme operational conditions and/or stress on structural supports is beyond our control. Such conditions may result in damage to this product. Improvements to products may be made without notice.

C4UX065X06F_{xy}s4

ELECTRICAL SPECIFICATIONS

■ Y1 ■ Y2

Frequency Range	MHz	(2x) 1695-2700			
Frequency Sub-Range	MHz	1695-1880	1850-1990	1920-2200	2300-2700
Polarization	---	(2x) $\pm 45^\circ$			
Gain	BASTA	dBi	12.3 ± 0.9	12.8 ± 1.0	12.7 ± 0.9
	MAX	dBi	13.2	13.8	13.6
Azimuth Beamwidth (3 dB)	degrees	$69.3^\circ \pm 12.1^\circ$	$69.7^\circ \pm 10.9^\circ$	$69.8^\circ \pm 7.9^\circ$	$65.2^\circ \pm 7.5^\circ$
Elevation Beamwidth (3 dB)	degrees	$25.2^\circ \pm 3.4^\circ$	$22.5^\circ \pm 1.8^\circ$	$21.5^\circ \pm 2.4^\circ$	$17.9^\circ \pm 2.0^\circ$
Electrical Downtilt	degrees	(y) $2^\circ, 4^\circ, 6^\circ$			
Impedance	Ohms	50Ω			
VSWR	---	1.5:1			
Passive Intermodulation 3rd Order for 2x20 W Carriers	dBc	< -153			
Upper Sidelobe Suppression	dB	> 12.1	> 12.3	> 12.8	> 11.9
Isolation	Intraband	dB	> 25		
	Interband	dB	> 28 same band; > 30 different band		

ELECTRICAL SPECIFICATIONS

■ Y3 ■ Y4

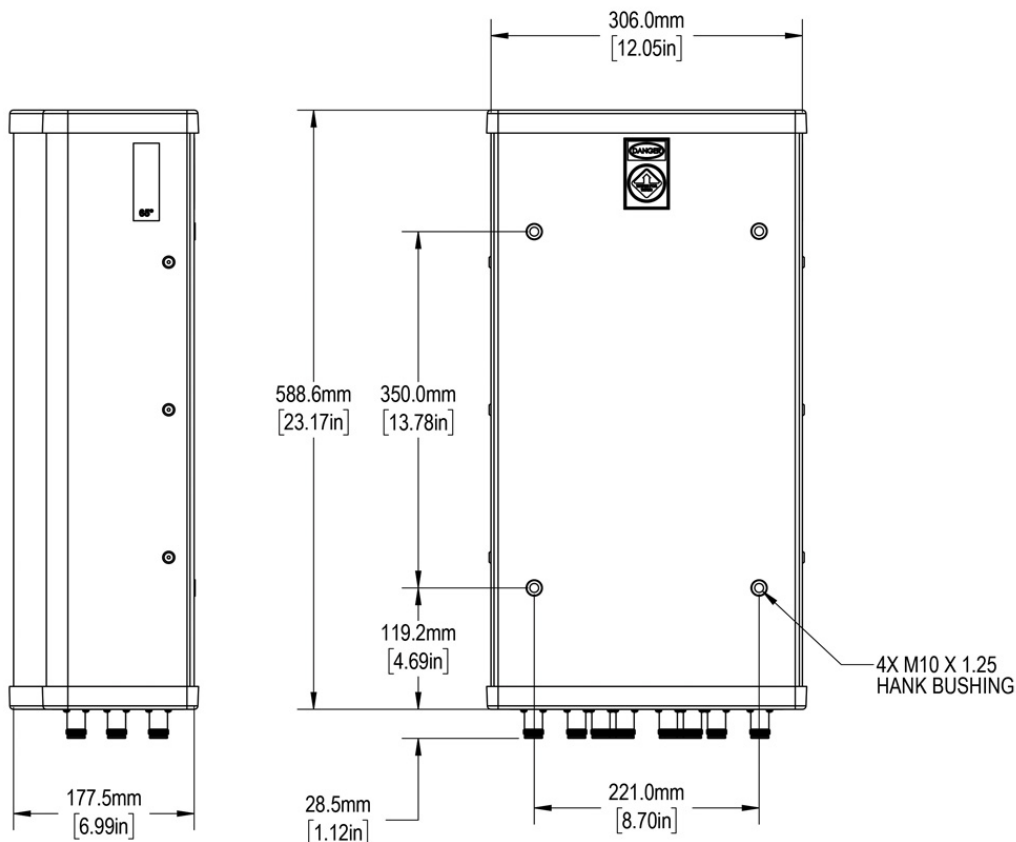
Frequency Range	MHz	(2x) 1695-2700			
Frequency Sub-Range	MHz	1695-1880	1850-1990	1920-2200	2300-2700
Polarization	---	(2x) $\pm 45^\circ$			
Gain	BASTA	dBi	9.5 ± 1.2	9.1 ± 1.4	9.1 ± 1.1
	MAX	dBi	10.7	10.5	10.2
Azimuth Beamwidth (3 dB)	degrees	$65.4^\circ \pm 14.5^\circ$	$76.7^\circ \pm 19.3^\circ$	$74.6^\circ \pm 16.7^\circ$	$59.9^\circ \pm 13.1^\circ$
Elevation Beamwidth (3 dB)	degrees	$45.1^\circ \pm 5.9^\circ$	$43.6^\circ \pm 6.5^\circ$	$40.8^\circ \pm 6.3^\circ$	$33.4^\circ \pm 3.9^\circ$
Electrical Downtilt	degrees	(y) $2^\circ, 4^\circ, 6^\circ$			
Impedance	Ohms	50Ω			
VSWR	---	1.5:1			
Passive Intermodulation 3rd Order for 2x20 W Carriers	dBc	< -153			
Upper Sidelobe Suppression	dB	N/A			
Isolation	Intraband	dB	> 25		
	Interband	dB	> 28 same band; > 30 different band		

Quoted performance parameters are provided to offer typical, peak or range values only and may vary as a result of normal testing, manufacturing and operational conditions. Extreme operational conditions and/or stress on structural supports is beyond our control. Such conditions may result in damage to this product. Improvements to products may be made without notice.

C4UX065X06F_{xy}s4

MECHANICAL SPECIFICATIONS

Antenna	Length	mm (in)	589 (23.2)
	Width	mm (in)	306 (12.1)
	Depth	mm (in)	178 (7.0)
Net Weight - Antenna Only		kg (lbs)	5.4 (12)
Windload	Calculation	km/h (mph)	160 (100)
	Frontal	N (lbf)	219 (49)
	Side	N (lbf)	129 (29)
Survival Wind Speed		km/h (mph)	241 (150)
Connector	Type	---	4.3-10 Female
	Quantity	---	10
	Position	---	Bottom
Radome Color		---	Grey
Operating Temperature		degrees	-40 to +60 C (-40 to +140 F)
Lightning Protection (Grounding Type)		---	Direct Ground

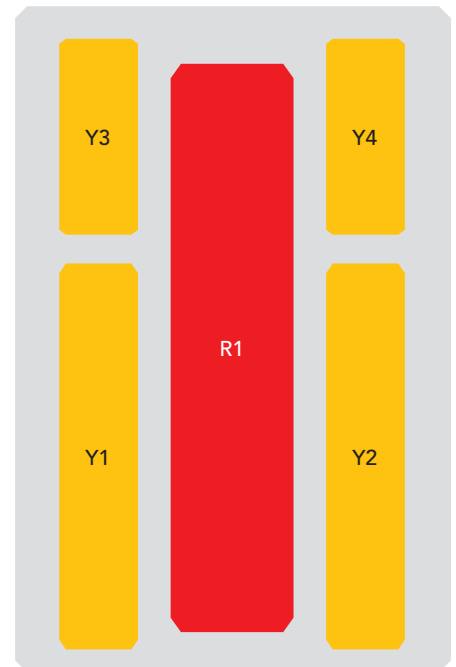


Quoted performance parameters are provided to offer typical, peak or range values only and may vary as a result of normal testing, manufacturing and operational conditions. Extreme operational conditions and/or stress on structural supports is beyond our control. Such conditions may result in damage to this product. Improvements to products may be made without notice.

C4UX065X06F_{xys4}

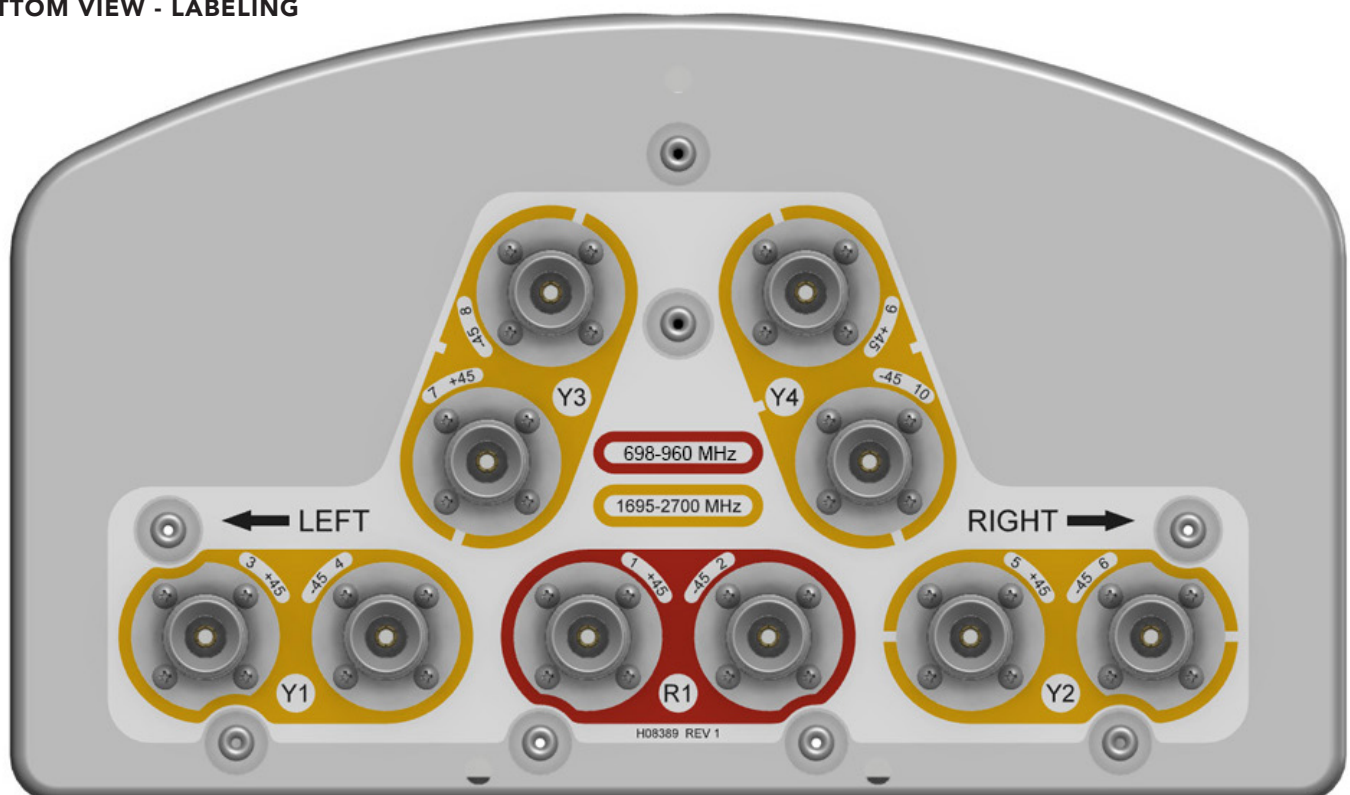
ARRAY LAYOUT Topology

FREQUENCY	ARRAY	CONNECTOR	CONNECTOR TYPE
698-960 MHz	■ R1	1-2	(2x) 4.3-10 Female
1695-2700 MHz	■ Y1	3-4	(2x) 4.3-10 Female
1695-2700 MHz	■ Y2	5-6	(2x) 4.3-10 Female
1695-2700 MHz	■ Y3	7-8	(2x) 4.3-10 Female
1695-2700 MHz	■ Y4	9-10	(2x) 4.3-10 Female



The illustration is not shown to scale.

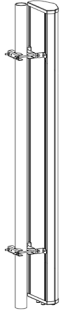
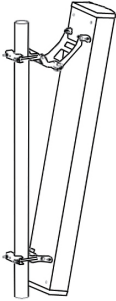
BOTTOM VIEW - LABELING



Quoted performance parameters are provided to offer typical, peak or range values only and may vary as a result of normal testing, manufacturing and operational conditions. Extreme operational conditions and/or stress on structural supports is beyond our control. Such conditions may result in damage to this product. Improvements to products may be made without notice.

C4UX065X06F_{xys4}

MOUNTING KITS Select from the following mounting options when ordering.

MODEL NUMBER		DESCRIPTION	FITS PIPE DIAMETER	WEIGHT
MKS04P01		2-POINT MOUNTING BRACKET KIT	40-115 mm (1.57-4.5 in)	2.9 kg (6.4 lbs)
MKS04T03		2-POINT, SCISSOR TILT, MOUNTING & DOWNTILT BRACKET KIT	40-115 mm (1.57-4.5 in)	4.1 kg (9 lbs)



The antennas shown in the mounting kit illustrations above are generic representations and may not resemble the antenna described within this data sheet.

INSTALLATION Please read all installation notes before installing this product.



Always attach the antenna using all mounting points.

Do not install the antenna with the connectors facing upwards.

C4UX065X06F^{xy}s4

HOW TO READ THE MODEL NUMBER Each letter and number has meaning.

NUMBER OF BANDS and OPERATING FRE- QUENCY		PATTERN TYPE	AZIMUTH BMWDTH	POLARIZA- TION	LENGTH	TILT TYPE	TILT OPTIONS	CONNECTOR TYPE	VARIATION	ORDERING OPTION
C	4U	X	065	X	06	F	xy	s	4	-P -T
(1x) 698- 960	(4x) 1695- 2700	Standard Panel Antenna	65°	XPOL	0.6 meters	Fixed Tilt	These letters are placeholders for fixed tilt options. Refer to Electrical Specifications for available tilt options.	4.3-10 Connector	4th generation mechanical package	To order the antenna and mounting kit together as one line item, add a -P for the 2-POINT MOUNTING BRACKET KIT (MKS04P01) or a -T for the 2-POINT, SCISSOR TILT, MOUNTING & DOWNTILT BRACKET KIT (MKS04T03) to the end of the model number. If -P or -T is not added, the bracket kit can be added as a separate line item, or the antenna shipped without a bracket. Refer to the ordering options on the following page for further detail.

ORDERING OPTIONS Select from the following ordering options

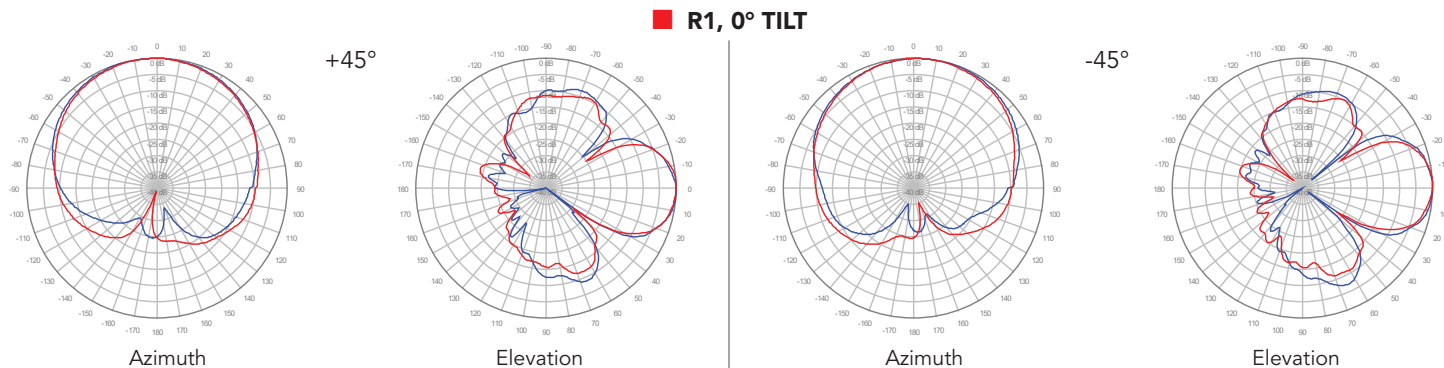
SELECT MOUNTING KIT	SELECT DEGREE OF ELECTRICAL DOWNTILT FOR EACH BAND		ORDER MODEL NUMBER
	698-960 MHz	1695-2700 MHz	
ANTENNA ONLY - NO MOUNTING KIT	0°	2°	C4UX065X06F02s4
	0°	4°	C4UX065X06F04s4
	0°	6°	C4UX065X06F06s4
ANTENNA WITH MKS04P01 MOUNTING KIT 2-Point Mounting Bracket Kit	0°	2°	C4UX065X06F02s4-P
	0°	4°	C4UX065X06F04s4-P
	0°	6°	C4UX065X06F06s4-P
ANTENNA WITH MKS04T03 MOUNTING KIT 2-Point, Scissor Tilt, Mounting & Downtilt Bracket Kit	0°	2°	C4UX065X06F02s4-T
	0°	4°	C4UX065X06F04s4-T
	0°	6°	C4UX065X06F06s4-T

Quoted performance parameters are provided to offer typical, peak or range values only and may vary as a result of normal testing, manufacturing and operational conditions. Extreme operational conditions and/or stress on structural supports is beyond our control. Such conditions may result in damage to this product. Improvements to products may be made without notice.

C4UX065X06F_{xy}s4

750 MHz —————

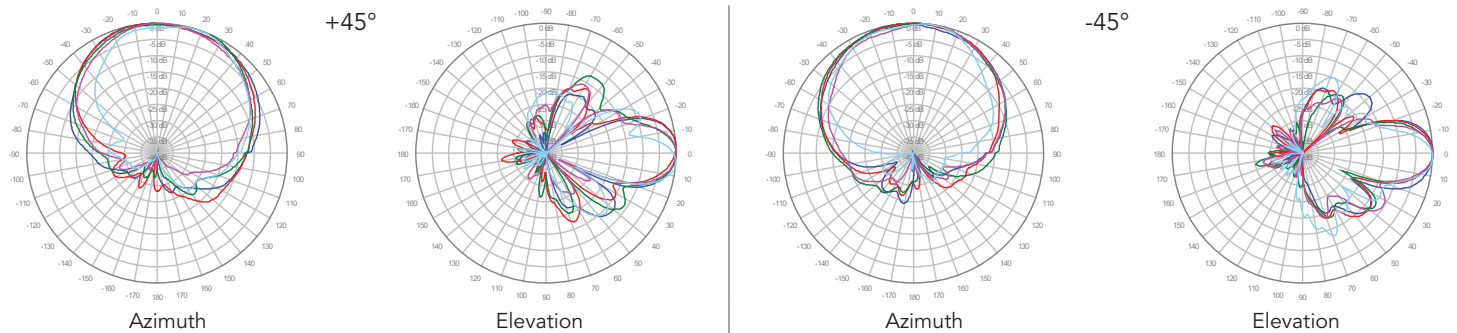
850 MHz —————



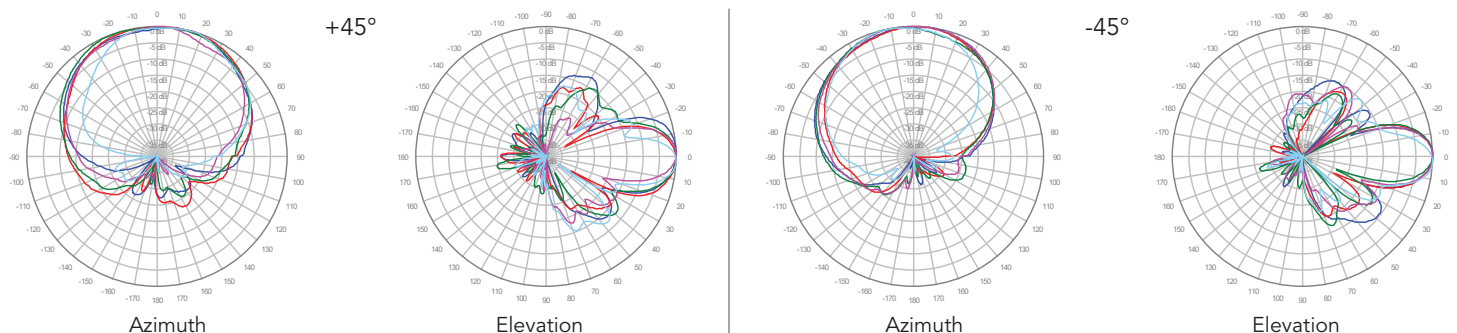
C4UX065X06F_{xy}s4

1800 MHz —
1900 MHz —
2100 MHz —
2300 MHz —
2600 MHz —

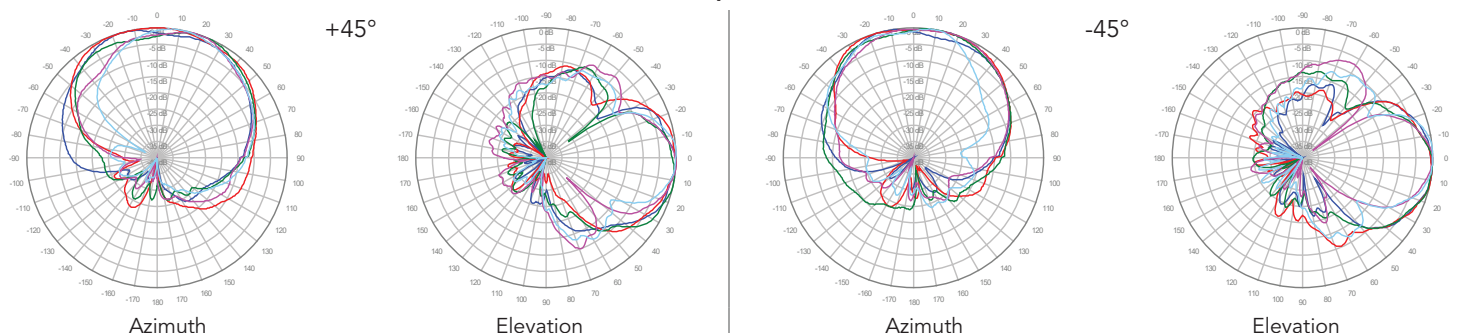
Y1, 2° TILT



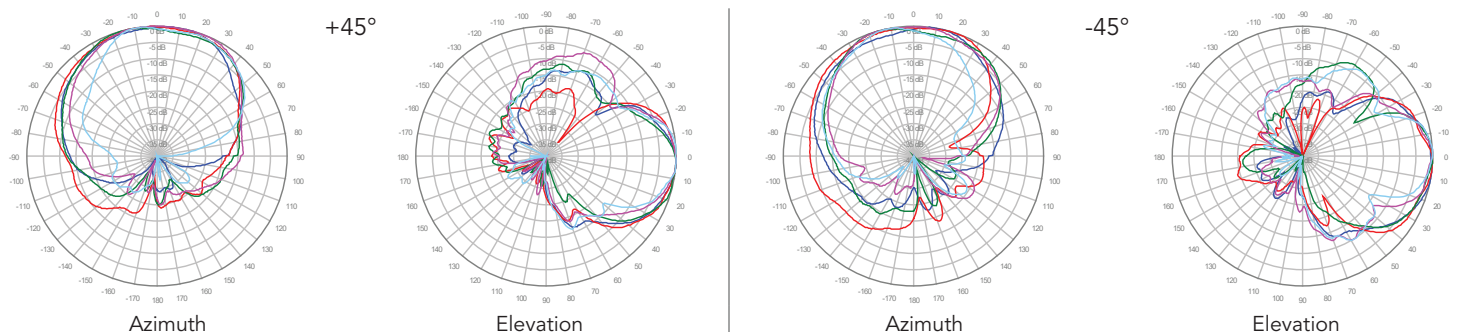
Y2, 2° TILT



Y3, 2° TILT



Y4, 2° TILT

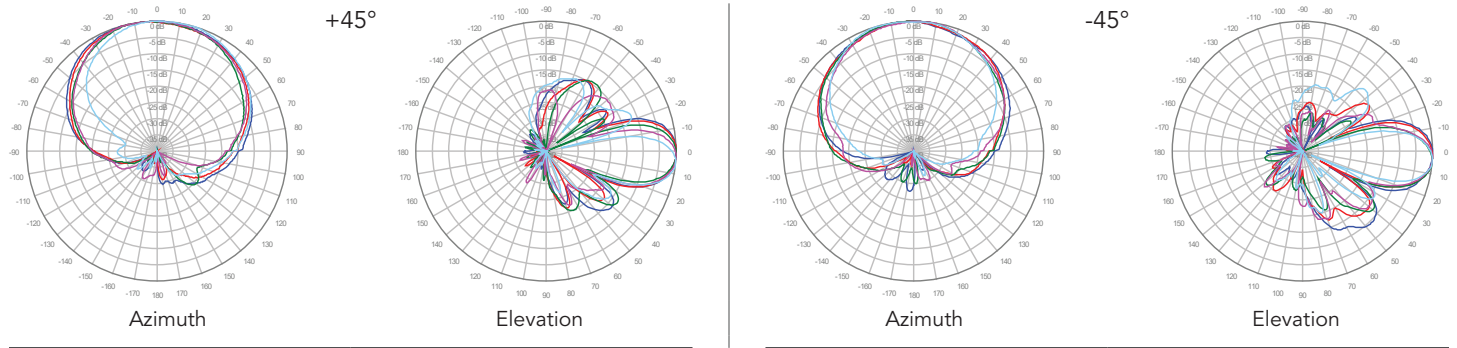


Quoted performance parameters are provided to offer typical, peak or range values only and may vary as a result of normal testing, manufacturing and operational conditions. Extreme operational conditions and/or stress on structural supports is beyond our control. Such conditions may result in damage to this product. Improvements to products may be made without notice.

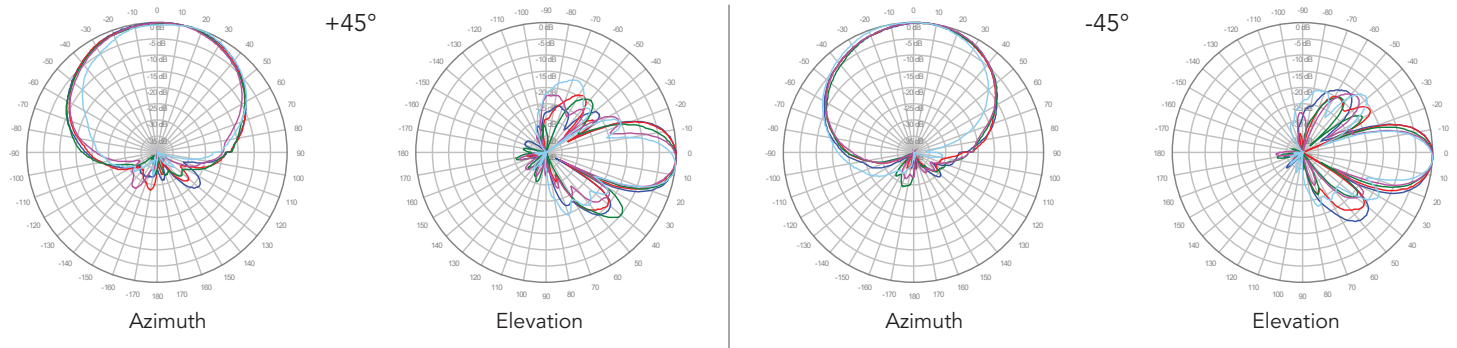
C4UX065X06F_{xy}s4

1800 MHz —
1900 MHz —
2100 MHz —
2300 MHz —
2600 MHz —

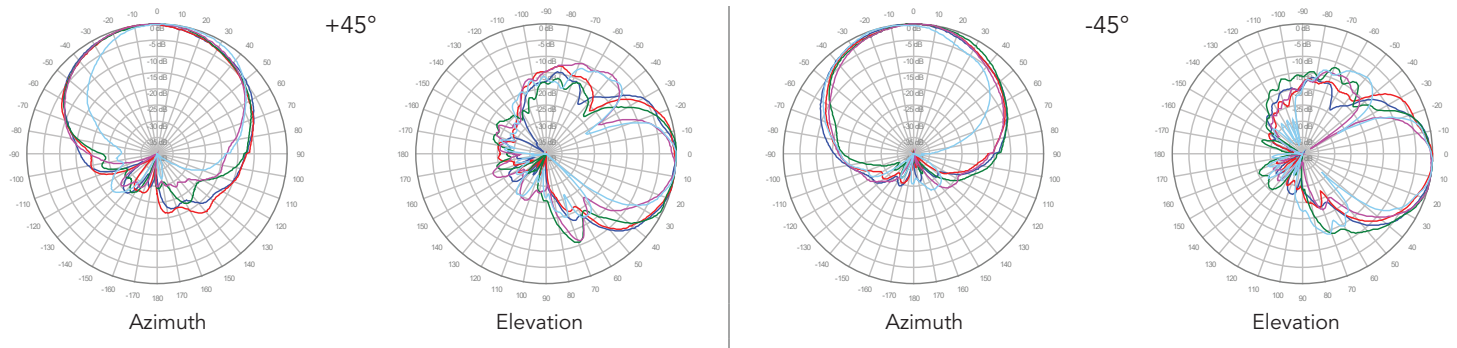
Y1, 4° TILT



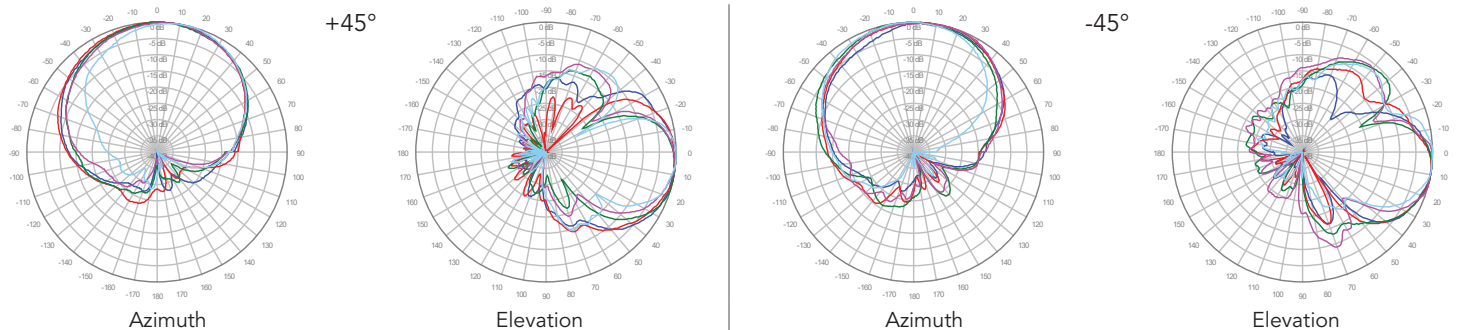
Y2, 4° TILT



Y3, 4° TILT



Y4, 4° TILT

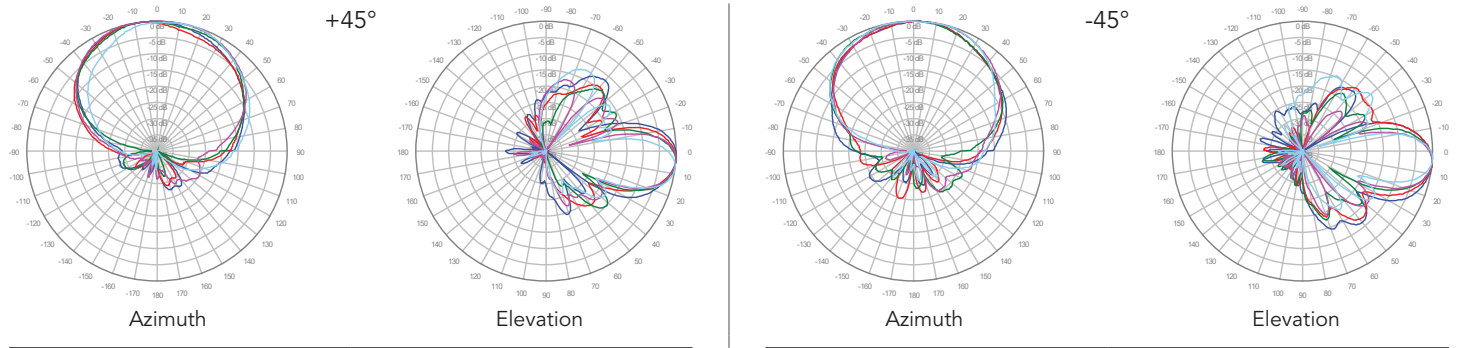


Quoted performance parameters are provided to offer typical, peak or range values only and may vary as a result of normal testing, manufacturing and operational conditions. Extreme operational conditions and/or stress on structural supports is beyond our control. Such conditions may result in damage to this product. Improvements to products may be made without notice.

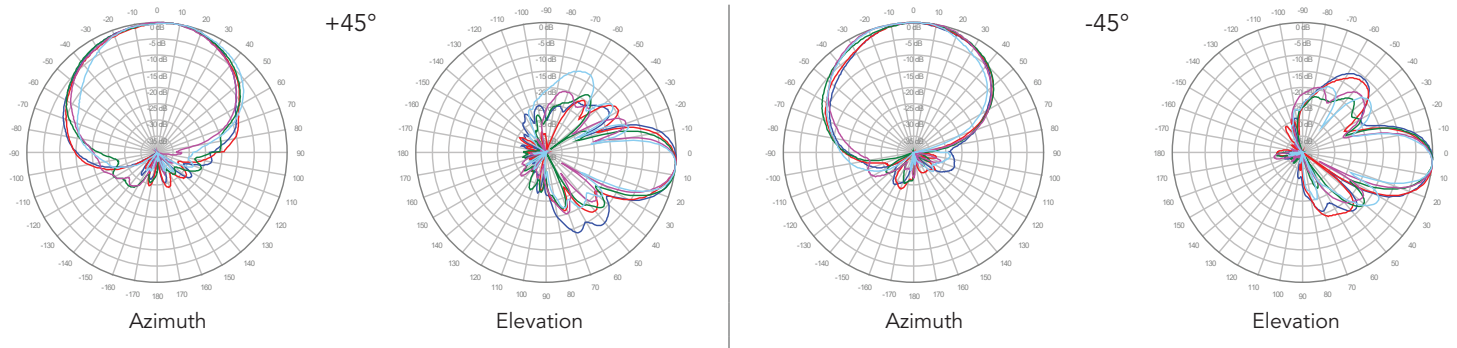
C4UX065X06F_{xy}s4

1800 MHz —
1900 MHz —
2100 MHz —
2300 MHz —
2600 MHz —

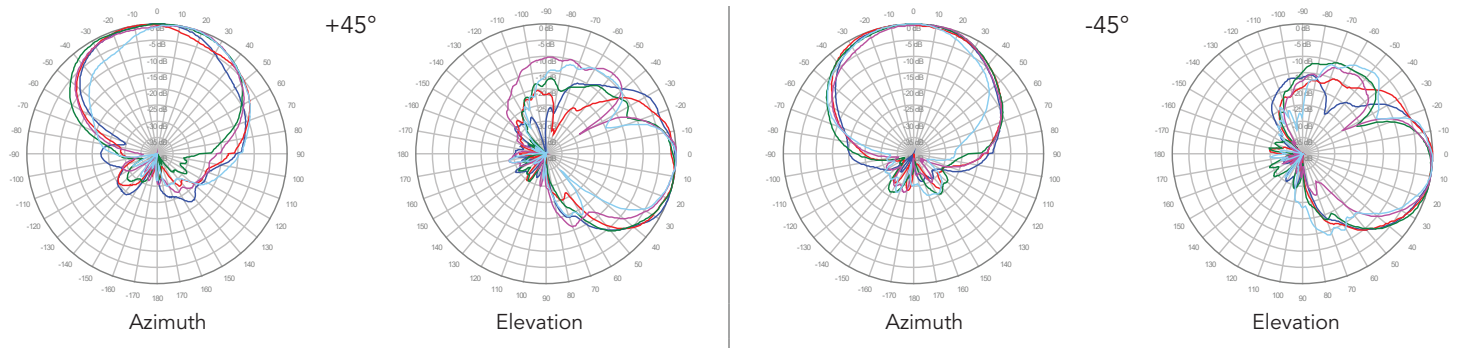
Y1, 6° TILT



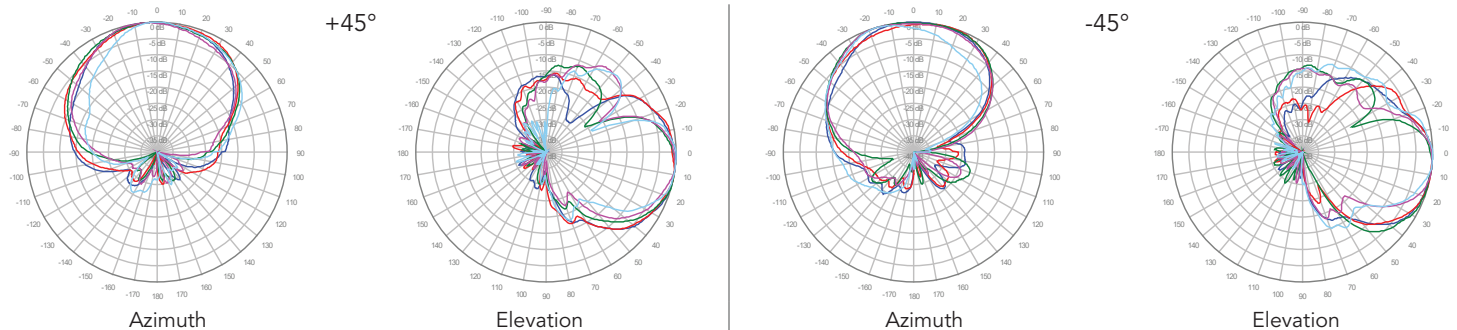
Y2, 6° TILT



Y3, 6° TILT



Y4, 6° TILT



Quoted performance parameters are provided to offer typical, peak or range values only and may vary as a result of normal testing, manufacturing and operational conditions. Extreme operational conditions and/or stress on structural supports is beyond our control. Such conditions may result in damage to this product. Improvements to products may be made without notice.