




B62-1L2MA-L0

Features

- 2 ports / 1 cross pol system in low band (698-960 MHz)
- 4 ports / 2 cross pol systems in high band (1710-2690 MHz)
- Integrated and field replaceable SRET
- Compliant with AISG v2.0 and 3GPP

PRODUCT OVERVIEW	Frequency Range (MHz)	(1x) 698-960	(2x) 1710-2690	
	Array	 R1	 Y1	 Y2
	Connector	1-2	3-4	5-6
		2 PORTS	4 PORTS	
	Polarization	XPOL	XPOL	
	Azimuth Beamwidth (avg)	65°	65°	
	Electrical Downtilt	2-15°	2-15°	
	Dimensions	700 x 350 x 200 mm (27.5 x 13.8 x 7.9 in)		

ORDERING OPTIONS

Select from the following ordering options

ANTENNA MODEL NUMBER	CONFIGURATION	MOUNTING HARDWARE	MOUNTING PIPE DIAMETER	SHIPPING WEIGHT	MOUNTING HARDWARE WEIGHT
B62-1L2MA-L0	ACU-I20-B43 Internal RET Included	APM50-L1 Beam Tilt Kit Included	60-120 mm (2.4-4.7 in)	19.1 kg (42.1 lbs)	4.7 kg (10.4 lbs)

B62-1L2MA-L0

ELECTRICAL SPECIFICATIONS

R1

Frequency Range		MHz	(1x) 698-960		
		MHz	698-806	790-894	880-960
Polarization		---	±45°		
Gain	Over all Tilts	dBi	12.0 ± 0.4	12.0 ± 0.3	12.2 ± 0.4
	Max Gain	dBi	12.4	12.3	12.6
Azimuth Beamwidth (3 dB)		degrees	75.6° ± 3.7°	72.1° ± 4.4°	68.5° ± 2.5°
Elevation Beamwidth (3 dB)		degrees	29.2° ± 2.2°	26.6° ± 1.2°	24.4° ± 1.8°
Electrical Downtilt		degrees	2-15°		
Impedance		Ohms	50Ω		
VSWR (Return Loss)		---	1.5:1 (-14 dB)		
Passive Intermodulation (3rd Order, 2 x 43dBm)		dBc	-150		
Front-to-Back Ratio, Total Power, ± 30°		dB	20.8	20.0	19.9
First Upper Side Lobe Suppression		dB	14.7	13.8	15.4
Cross Polar Discrimination at Boresight		dB	25.0	23.7	19.3
Maximum Effective Power Per Port		Watts	300 W		
Cross Polar Isolation		dB	25	25	25
Interband Isolation		dB	25	25	25

Specifications follow BASTA guidelines.

ELECTRICAL SPECIFICATIONS

Y1 Y2

Frequency Range		MHz	(2x) 1710-2690				
		MHz	1710-1880	1850-1990	1920-2170	2300-2400	2500-2690
Polarization		---	±45°				
Gain	Over all Tilts	dBi	15.1 ± 0.4	14.9 ± 0.3	14.8 ± 0.5	15.0 ± 0.7	15.9 ± 0.8
	Max Gain	dBi	15.5	15.2	15.3	15.7	16.7
Azimuth Beamwidth (3 dB)		degrees	65.8° ± 5.9°	68.5° ± 4.8°	69.7° ± 4.2°	69.6° ± 5.3°	59.0° ± 8.1°
Elevation Beamwidth (3 dB)		degrees	12.6° ± 0.8°	11.7° ± 0.6°	11.0° ± 0.9°	9.8° ± 0.4°	8.8° ± 0.6°
Electrical Downtilt		degrees	2-15°				
Impedance		Ohms	50Ω				
VSWR (Return Loss)		---	1.5:1 (-14 dB)				
Passive Intermodulation (3rd Order, 2 x 43dBm)		dBc	-150				
Front-to-Back Ratio, Total Power, ± 30°		dB	22.2	21.0	21.7	20.0	17.6
First Upper Side Lobe Suppression		dB	12.2	13.7	13.8	15.0	14.0
Cross Polar Discrimination at Boresight		dB	20.6	20.1	21.2	20.4	18.2
Maximum Effective Power Per Port		Watts	250 W				
Cross Polar Isolation		dB	25	25	25	25	25
Interband Isolation		dB	25	25	25	25	25

Specifications follow BASTA guidelines.

Quoted performance parameters are provided to offer typical, peak or range values only and may vary as a result of normal testing, manufacturing and operational conditions. Extreme operational conditions and/or stress on structural supports is beyond our control. Such conditions may result in damage to this product. Improvements to products may be made without notice.

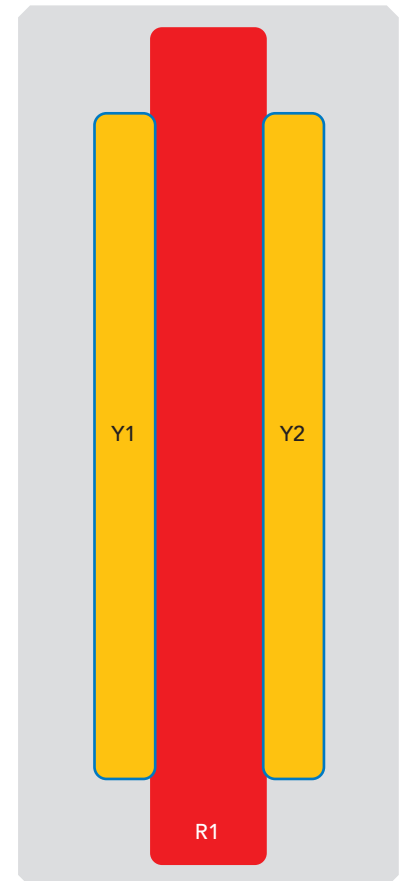
B62-1L2MA-L0

BOTTOM VIEW - LABELING



ARRAY LAYOUT

ARRAY	FREQUENCY	CONNECTOR	CONNECTOR TYPE
■ R1	698-960 MHz	1-2	(2x) 4.3-10 Female
■ Y1	1710-2690 MHz	3-4	(2x) 4.3-10 Female
■ Y2	1710-2690 MHz	5-6	(2x) 4.3-10 Female



The illustration is not shown to scale.

B62-1L2MA-L0

MECHANICAL SPECIFICATIONS

Length		mm (in)	700 (27.5)
Width		mm (in)	350 (13.8)
Depth		mm (in)	200 (7.9)
Net Weight - Antenna Only		kg (lbs)	11 (26.4)
Net Weight - Mounting Hardware Only		kg (lbs)	4.7 (10.4)
Wind Load Rated at 150 km/h (93 mph)	Front	N (lbf)	346 (78)
	Side	N (lbf)	197 (44)
	Rear	N (lbf)	380 (85)
Survival Wind Speed		km/h (mph)	200 (124)
Connector Type		--	(6x) 4.3-10 Female, (2x) AISG Connectors (1 Male, 1 Female) at Bottom
Radome Color		---	Light Grey
Radome Material		---	Fiberglass
Lightning Protection		---	DC Ground
Shipping	Packing Size (Length x Width x Depth)	mm (in)	935 x 430 x 240 (36.8 x 16.9 x 9.4)
	Shipping Weight	kg (lbs)	19.1 (42.1)

ENVIRONMENTAL SPECIFICATIONS

Environmental Standard	---	ETS 300 019
Operating Temperature	degrees	-40° to +60° C (-40° to +140° F)
Product Environmental Compliance	---	Product is RoHS Compliant

B62-1L2MA-L0

ACCESSORIES Accessories may be ordered separately unless otherwise indicated.

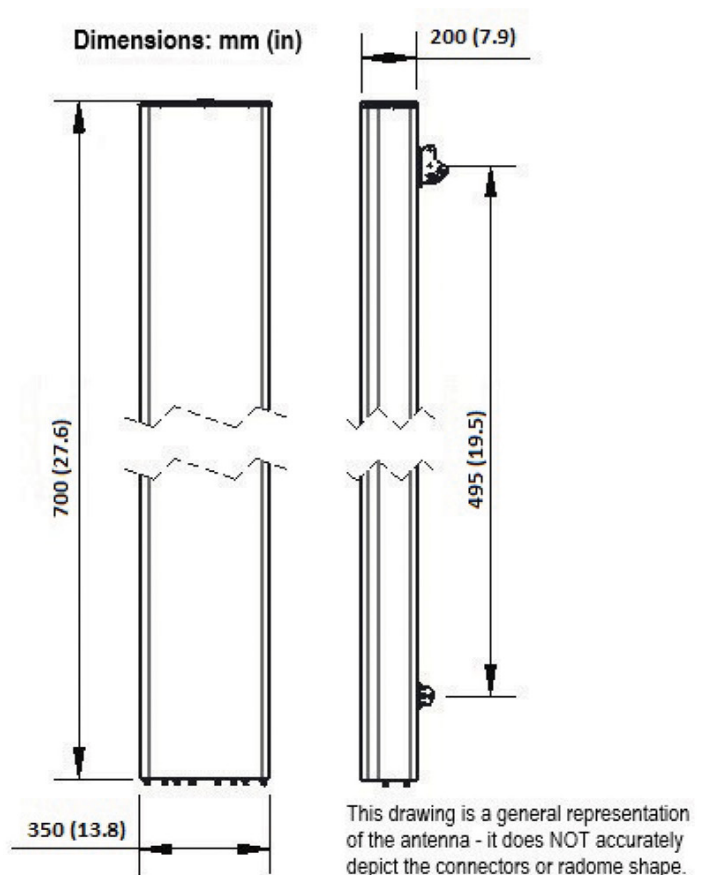
ITEM	MODEL NUMBER	WEIGHT
Beam Tilt Mounting Bracket Kit for Pole Diameter 60-120 mm (2.4-4.7 in)	APM50-L1	4.7 kg (10.4 lbs)

INSTALLATION Please read all installation notes before installing product.



- Always attach the antenna using all mounting points.
- Do not install antenna with the connectors facing upwards.

EXTERNAL DOCUMENT LINKS



NOTES

- Specifications follow BASTA guidelines.
- For Radiating Patterns: [Request pattern files](#)