



APXVBL26B2_43-C-I20

Features

Dual-band cross-polarized (4 ports), 1x 698-960 / 1x 1710-2690 MHz

- Ultra-broadband design for LTE 700 and LTE 2600 compatibility
- Variable electrical downtilt - provides enhanced precision in controlling inter-cell interferences
- Ideal for dense areas
- SRET - Field replaceable / ACU HW version -2.02



PRODUCT OVERVIEW	Frequency Range (MHz)	698-960	1710-2690
	Array	 R1	 Y1
	Connector	1-2	3-4
		4 PORTS	
	Polarization	XPOL	
	Azimuth Beamwidth (avg)	65°	65°
	Electrical Downtilt	2-10°	2-10°
	Dimensions	2690 x 350 x 200 mm (105.9 x 13.8 x 7.9 in)	

ORDERING OPTIONS

Select from the following ordering options

ANTENNA MODEL NUMBER	CONFIGURATION	MOUNTING HARDWARE	MOUNTING PIPE DIAMETER	SHIPPING WEIGHT
APXVBL26B2_43-C-I20	ACU-I20-B2 Internal RET Included	APM50-B1 Beam Tilt Kit Included	50-110 mm (2.0-4.3 in)	38.9 kg (85.8 lbs)

APXVBL26B2_43-C-I20

ELECTRICAL SPECIFICATIONS

■ R1

Frequency Range		MHz	698-960		
		MHz	698-806	790-896	870-960
Polarization		---	±45°		
Gain	Over all Tilts	dBi	16.3 ± 0.3	16.8 ± 0.3	16.9 ± 0.4
	Max Gain	dBi	16.6	17.1	17.3
Azimuth Beamwidth (3 dB)		degrees	67.9° ± 1.1°	65.5° ± 1.8°	64.9° ± 1.0°
Elevation Beamwidth (3 dB)		degrees	8.5° ± 0.4°	7.6° ± 0.6°	7.0° ± 0.3°
Electrical Downtilt		degrees	2-10°		
Impedance		Ohms	50Ω		
VSWR (Return Loss)		---	1.5:1 (-14 dB)		
Passive Intermodulation		dBc	-150 (3rd Order for 2x20 W Carriers)		
Front-to-Back Ratio, Total Power, ± 30°		dB	24.4	24.7	24
First Upper Side Lobe Suppression		dB	18.9	17.6	15.7
Cross Polar Discrimination Over Sector		dB	12.2	9	9.3
Cross Polar Discrimination (XPD) at Mechanical Boresight (0°)		dB	26.6	25.1	24.1
Maximum Effective Power Per Port		Watts	350 W		
Cross Polar Isolation		dB	26		
Interband Isolation		dB	26		

Specifications follow BASTA guidelines.

ELECTRICAL SPECIFICATIONS

■ Y1

Frequency Range		MHz	1710-2690				
		MHz	1710-1880	1850-1990	1920-2200	2300-2400	2500-2690
Polarization		---	±45°				
Gain	Over all Tilts	dBi	17.0 ± 0.8	17.6 ± 0.5	18.2 ± 0.6	17.3 ± 0.6	18.0 ± 0.8
	Max Gain	dBi	17.8	18.1	18.8	17.9	18.8
Azimuth Beamwidth (3 dB)		degrees	66.3° ± 7.0°	68.2° ± 3.9°	64.6° ± 8.3°	66.3° ± 3.8°	60.0° ± 3.6°
Elevation Beamwidth (3 dB)		degrees	5.2° ± 0.6°	5.0° ± 0.4°	4.5° ± 0.3°	4.2° ± 0.4°	3.8° ± 0.3°
Electrical Downtilt		degrees	2-10°				
Impedance		Ohms	50Ω				
VSWR (Return Loss)		---	1.5:1 (-14 dB)				
Passive Intermodulation		dBc	-150 (3rd Order for 2x20 W Carriers)				
Front-to-Back Ratio, Total Power, ± 30°		dB	19.9	19.9	22.5	23.2	24.1
First Upper Side Lobe Suppression		dB	18.5	19.5	21	19.9	18.2
Cross Polar Discrimination Over Sector		dB	9	8.2	5.2	8.1	6.1
Cross Polar Discrimination (XPD) at Mechanical Boresight (0°)		dB	18.2	19	17.5	13.2	15.7
Maximum Effective Power Per Port		Watts	250 W				
Cross Polar Isolation		dB	26				
Interband Isolation		dB	26				

Specifications follow BASTA guidelines.

Quoted performance parameters are provided to offer typical, peak or range values only and may vary as a result of normal testing, manufacturing and operational conditions. Extreme operational conditions and/or stress on structural supports is beyond our control. Such conditions may result in damage to this product. Improvements to products may be made without notice.

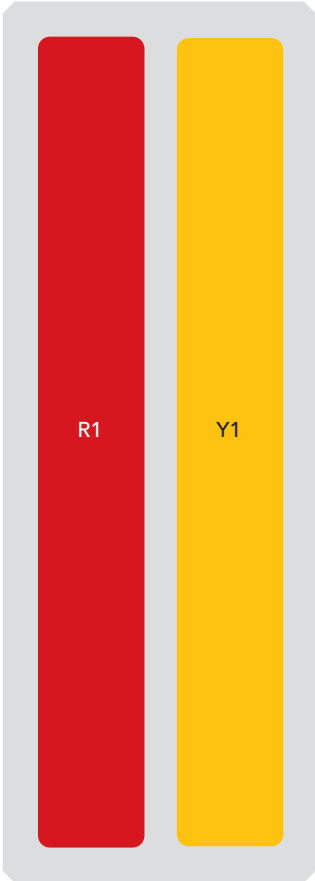
APXVBL26B2_43-C-I20

BOTTOM VIEW - LABELING



ARRAY LAYOUT

ARRAY	FREQUENCY	CONNECTOR	CONNECTOR TYPE	RET	AISG RET UID
■ R1	698-960 MHz	1-2	(2x) 4.3-10 Female	R1	RFxxxxxxxxxx-R1
■ Y1	1710-2690 MHz	3-4	(2x) 4.3-10 Female	Y1	RFxxxxxxxxxx-Y1



The illustration is not shown to scale.

APXVBL26B2_43-C-I20

MECHANICAL SPECIFICATIONS

Length		mm (in)	2690 (105.9)
Width		mm (in)	350 (13.8)
Depth		mm (in)	200 (7.9)
Net Weight - Antenna Only		kg (lbs)	28.4 (38.9)
Net Weight - Mounting Hardware Only		kg (lbs)	4.5 (9.9)
Wind Load Rated at 150 km/h (93 mph)	Front	N (lbf)	1550 (348)
	Side	N (lbf)	1003 (225)
	Rear	N (lbf)	1923 (432)
Survival Wind Speed / Rated Wind Speed		km/h (mph)	200 (150)
Connector Type		--	(4x) 4.3-10 Female, (2x) AISG Connectors (1 Male, 1 Female) at Bottom
Radome Color		---	Light Grey
Radome Material		---	Fiberglass
Lightning Protection		---	DC Ground
Shipping	Packing Size (Length x Width x Depth)	mm (in)	2940 x 445 x 295 (115.7 x 17.5 x 11.6)
	Shipping Weight	kg (lbs)	38.9 (85.8)

ENVIRONMENTAL SPECIFICATIONS


Environmental Standard	---	ETS 300 019
Operating Temperature	degrees	-40° to +60° C (-40° to +140° F)
Product Environmental Compliance	---	Product is RoHS Compliant

APXVBL26B2_43-C-I20

ACCESSORIES Accessories may be ordered separately unless otherwise indicated.

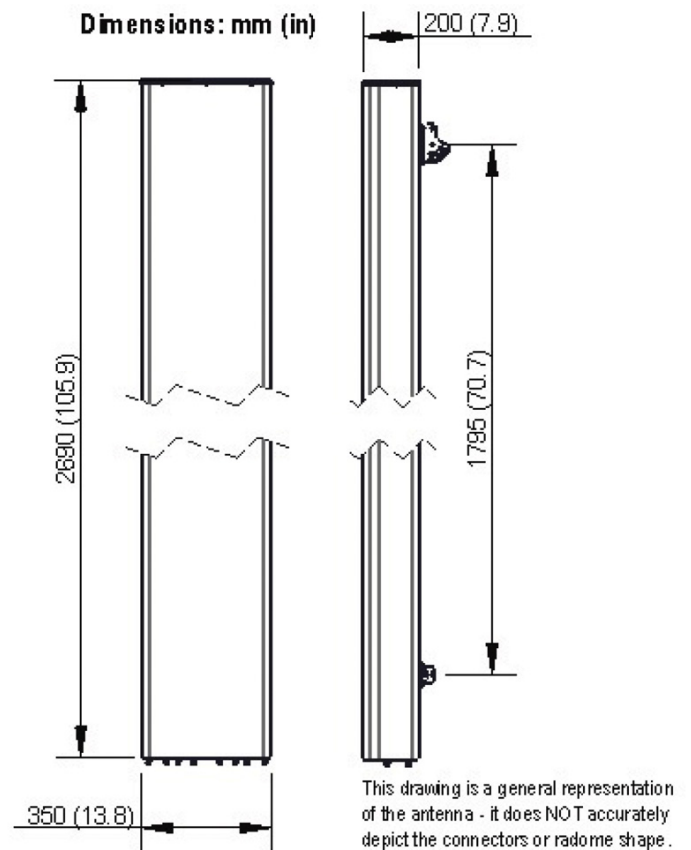
ITEM	MODEL NUMBER	WEIGHT
Beam Tilt Mounting Bracket Kit for Pole Diameter 50-110 mm (2.0-4.3 in) <i>Shipped with antenna</i>	APM50-B1	4.5 kg (9.9 lbs)

INSTALLATION Please read all installation notes before installing product.

	Always attach the antenna using all mounting points.
	Do not install antenna with the connectors facing upwards.

EXTERNAL DOCUMENT LINKS

[APM50 Mounting Kit Series Installation Instructions](#)



NOTES

Specifications follow BASTA guidelines.

For additional mounting information, please check **External Document Links**.

For Radiating Patterns: [Request pattern files](#)