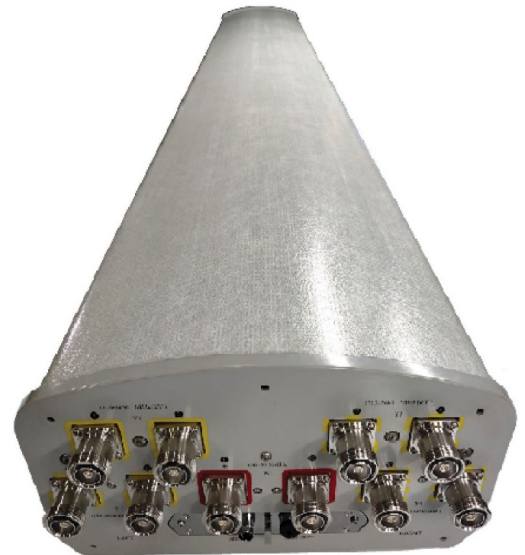


APXVB4L26B_43-C-I20 APXVB4L26B_43-C-I20S

Features

- 2 ports / 1 cross pol system in low band (698-960 MHz)
- 8 ports / 4 cross pol systems in high band (1710-2690 MHz)
- Integrated and field replaceable SRET
- Optional with Site Sharing feature (Model name suffix -I20S)
- Compliant with AISG v2.0 and 3GPP



PRODUCT OVERVIEW	Frequency Range (MHz)	(1x) 698-960	(4x) 1710-2690			
	Array	■ R1	■ Y1	■ Y2	■ Y3	■ Y4
	Connector	1-2	3-4	5-6	7-8	9-10
		10 PORTS				
	Polarization	XPOL				
	Azimuth Beamwidth (avg)	65°	65°			
	Electrical Downtilt	2-12°	2-12°			
	Dimensions	2600 x 350 x 200 mm (102.4 x 13.8 x 7.9 in)				

ORDERING OPTIONS

Select from the following ordering options

ANTENNA MODEL NUMBER	CONFIGURATION	MOUNTING HARDWARE	MOUNTING PIPE DIAMETER	SHIPPING WEIGHT	MOUNTING HARDWARE WEIGHT
APXVB4L26B_43-C-I20	ACU-I20-B5 Internal RET Included	APM50-B1 Beam Tilt Kit Included	50-110 mm (2.0-4.3 in)	40 kg (88.2 lbs)	4.5 kg (9.9 lbs)
APXVB4L26B_43-C-I20S	ACU-X20-B5 Internal RET for Site Sharing Included	APM50-B1 Beam Tilt Kit Included	50-110 mm (2.0-4.3 in)	40 kg (88.2 lbs)	4.5 kg (9.9 lbs)



Quoted performance parameters are provided to offer typical, peak or range values only and may vary as a result of normal testing, manufacturing and operational conditions. Extreme operational conditions and/or stress on structural supports is beyond our control. Such conditions may result in damage to this product. Improvements to products may be made without notice.

65°

2600 mm

INTEGRATED RET

SITE SHARING OPTIONAL

APXVB4L26B_43-C-I20

APXVB4L26B_43-C-I20S

ELECTRICAL SPECIFICATIONS

■ R1

Frequency Range		MHz	698-960		
		MHz	698-806	790-894	880-960
Polarization		---	±45°		
Gain	Over all Tilts	dBi	16.0 ± 0.5	16.5 ± 0.4	16.8 ± 0.7
	Max Gain	dBi	16.5	16.9	17.5
Azimuth Beamwidth (3 dB)		degrees	72.8° ± 2.3°	69.7° ± 1.6°	65.5° ± 2.6°
Elevation Beamwidth (3 dB)		degrees	9.0° ± 0.7°	8.3° ± 0.6°	7.6° ± 0.5°
Electrical Downtilt		degrees	2-12°		
Impedance		Ohms	50Ω		
VSWR (Return Loss)		---	1.5:1 (-14 dB)		
Passive Intermodulation		dBc	-150 (3rd Order, 2 x 43 dBm)		
Front-to-Back Ratio, Total Power, ± 30°		dB	24.7	24.9	23.2
First Upper Side Lobe Suppression		dB	16.2	18.2	18.4
Cross Polar Discrimination Over Sector		dB	16.7	12.8	9.3
Cross Polar Discrimination (XPD) at Mechanical Boresight (0°)		dB	24.6	22.8	21.1
Maximum Effective Power Per Port		Watts	350 W		
Cross Polar Isolation		dB	25		
Interband Isolation		dB	25		

Specifications follow BASTA guidelines.

ELECTRICAL SPECIFICATIONS

■ Y1 ■ Y2 ■ Y3 ■ Y4

Frequency Range		MHz	1710-2690				
		MHz	1710-1880	1850-1990	1920-2170	2300-2400	2490-2690
Polarization		---	±45°				
Gain	Over all Tilts	dBi	16.4 ± 0.8	16.6 ± 0.6	16.4 ± 0.8	16.4 ± 0.5	17.2 ± 0.7
	Max Gain	dBi	17.2	17.2	17.2	16.9	17.9
Azimuth Beamwidth (3 dB)		degrees	62.4° ± 9.3°	60.3° ± 4.2°	65.4° ± 10.2°	74.0° ± 2.9°	65.5° ± 7.2°
Elevation Beamwidth (3 dB)		degrees	8.2° ± 0.8°	7.6° ± 0.9°	7.0° ± 1.0°	6.1° ± 0.5°	5.5° ± 0.4°
Electrical Downtilt		degrees	2-12°				
Impedance		Ohms	50Ω				
VSWR (Return Loss)		---	1.5:1 (-14 dB)				
Passive Intermodulation		dBc	-150 (3rd Order, 2 x 43 dBm)				
Front-to-Back Ratio, Total Power, ± 30°		dB	21.7	21.1	20.6	19.5	24.4
First Upper Side Lobe Suppression		dB	17.1	16.5	18.1	18.2	18.9
Cross Polar Discrimination Over Sector		dB	6.1	7.7	7.3	5.6	1.3
Cross Polar Discrimination (XPD) at Mechanical Boresight (0°)		dB	17.4	19.1	20.8	20.2	19.7
Maximum Effective Power Per Port		Watts	250 W				
Cross Polar Isolation		dB	25				
Interband Isolation		dB	25				

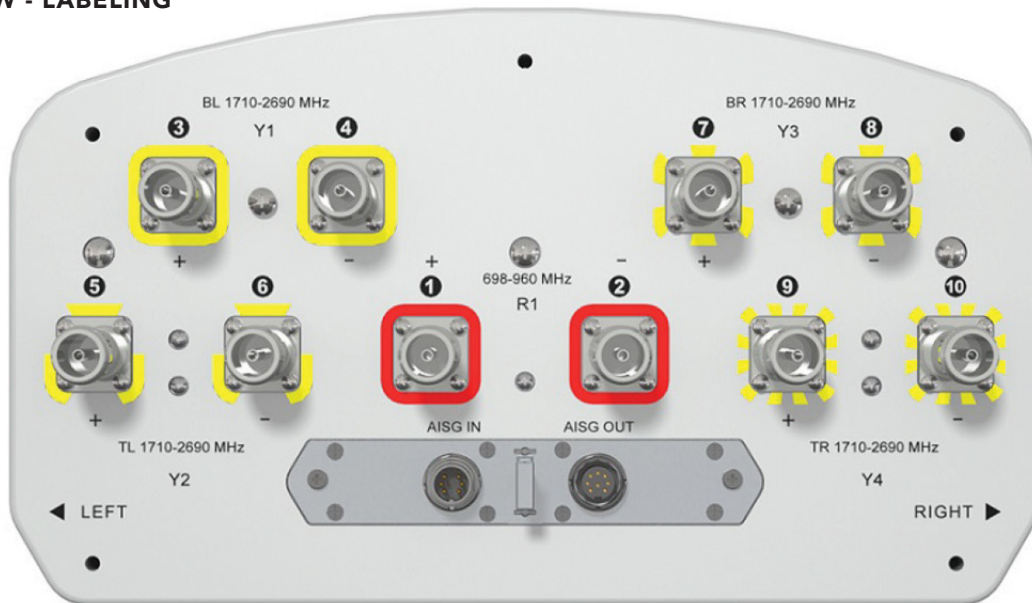
Specifications follow BASTA guidelines.

Quoted performance parameters are provided to offer typical, peak or range values only and may vary as a result of normal testing, manufacturing and operational conditions. Extreme operational conditions and/or stress on structural supports is beyond our control. Such conditions may result in damage to this product. Improvements to products may be made without notice.

APXVB4L26B_43-C-I20

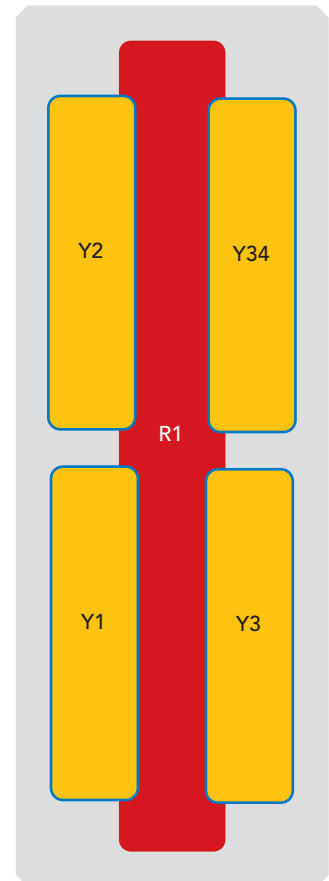
APXVB4L26B_43-C-I20S

BOTTOM VIEW - LABELING



ARRAY LAYOUT

ARRAY	FREQUENCY	CONNECTOR	CONNECTOR TYPE	RET	AISG RET UID
■ R1	698-960 MHz	1-2	(2x) 4.3-10 Female	R1	RFxxxxxxxxxx-R1
■ Y1	1710-2690 MHz	3-4	(2x) 4.3-10 Female	Y1	RFxxxxxxxxxx-Y1
■ Y2	1710-2690 MHz	5-6	(2x) 4.3-10 Female	Y2	RFxxxxxxxxxx-Y2
■ Y3	1710-2690 MHz	7-8	(2x) 4.3-10 Female	Y3	RFxxxxxxxxxx-Y3
■ Y4	1710-2690 MHz	9-10	(2x) 4.3-10 Female	Y4	RFxxxxxxxxxx-Y4



The illustration is not shown to scale.

Quoted performance parameters are provided to offer typical, peak or range values only and may vary as a result of normal testing, manufacturing and operational conditions. Extreme operational conditions and/or stress on structural supports is beyond our control. Such conditions may result in damage to this product. Improvements to products may be made without notice.

65°

2600 mm

INTEGRATED RET

SITE SHARING OPTIONAL

APXVB4L26B_43-C-I20

APXVB4L26B_43-C-I20S

MECHANICAL SPECIFICATIONS

Length	mm (in)	2600 (102.4)
Width	mm (in)	350 (13.8)
Depth	mm (in)	200 (7.9)
Net Weight - Antenna Only	kg (lbs)	29 (63.9)
Wind Load Rated at 150 km/h (93 mph)	Front	N (lbf) 1189 (267)
	Side	N (lbf) 617 (139)
	Rear	N (lbf) 673 (151)
Survival Wind Speed	km/h (mph)	200 (124)
Connector Type	--	(10x) 4.3-10 Female, (2x) AISG Connectors (1 Male, 1 Female) at Bottom Site Sharing: (4x) AISG Connectors (2 Male, 2 Female) at Bottom
Radome Color	---	Light Grey RAL7035
Radome Material	---	Fiberglass
Lightning Protection	---	Direct Ground
Shipping	Packing Size (Length x Width x Depth)	mm (in) 2850 x 445 x 295 (112.2 x 17.5 x 11.6)

ENVIRONMENTAL SPECIFICATIONS

Environmental Standard	---	ETS 300 019
Operating Temperature	degrees	-40° to +60° C (-40° to +140° F)
Product Environmental Compliance	---	Product is RoHS Compliant

65°

2600 mm

INTEGRATED RET

SITE SHARING OPTIONAL

APXVB4L26B_43-C-I20

APXVB4L26B_43-C-I20S

ACCESSORIES Accessories may be ordered separately unless otherwise indicated.

ITEM	MODEL NUMBER	WEIGHT
Beam Tilt Mounting Bracket Kit for Pole Diameter 50-110 mm (2.0-4.3 in) <i>Shipped with antenna</i>	APM50-B1	4.5 kg (9.9 lbs)

INSTALLATION Please read all installation notes before installing product.

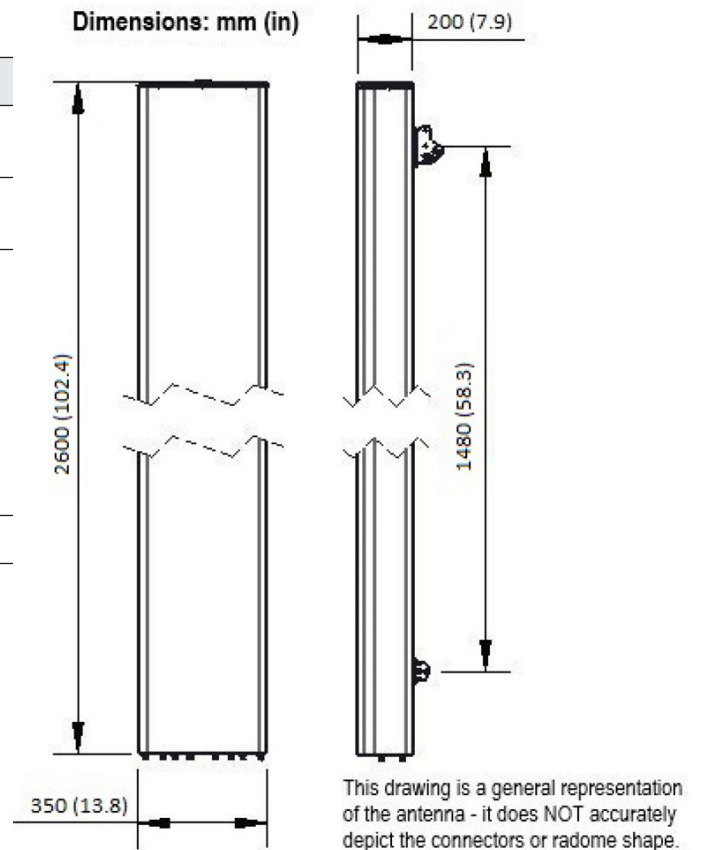


Always attach the antenna using all mounting points.

Do not install antenna with the connectors facing upwards.

EXTERNAL DOCUMENT LINKS

[APM50 Mounting Kit Series Installation Instructions](#)



NOTES

Specifications follow BASTA guidelines.

For additional mounting information, please check **External Document Links**.

For Radiating Patterns: [Request pattern files](#)