

APXVB15B_43-C-I20

Features

- 2 ports / 1 cross pol system in low band (698-960 MHz)
- Integrated and field replaceable SRET
- ACU HW version: 2.02
- Compliant with AISG v2.0 and 3GPP



PRODUCT OVERVIEW	Frequency Range (MHz)	698-960
	Array	■ R1
	Connector	1-2
		2 PORTS
	Polarization	XPOL
	Azimuth Beamwidth (avg)	65°
	Electrical Downtilt	2-15°
	Dimensions	1490 x 320 x 140 mm (58.7 x 12.6 x 5.5 in)

ORDERING OPTIONS

Select from the following ordering options

ANTENNA MODEL NUMBER	CONFIGURATION	MOUNTING HARDWARE	MOUNTING PIPE DIAMETER	SHIPPING WEIGHT
APXVB15B_43-C-I20	ACU-I20-B1 Internal RET Included	APM50-B1 Beam Tilt Kit Included	50-110 mm (2.0-4.3 in)	24.0 kg (52.9 lbs)



Quoted performance parameters are provided to offer typical, peak or range values only and may vary as a result of normal testing, manufacturing and operational conditions. Extreme operational conditions and/or stress on structural supports is beyond our control. Such conditions may result in damage to this product. Improvements to products may be made without notice.

APXVB15B_43-C-I20

ELECTRICAL SPECIFICATIONS

■ R1

Frequency Range		MHz	698-960		
		MHz	698-790	790-890	890-960
Polarization		---	±45°		
Gain	Over all Tilts	dBi	14.1 ± 0.6	14.7 ± 0.5	15.0 ± 0.1
	Max Gain	dBi	14.7	15.2	15.1
Azimuth Beamwidth (3 dB)		degrees	69.3° ± 2.0°	66.0° ± 2.5°	63.5° ± 1.9°
Elevation Beamwidth (3 dB)		degrees	17.2° ± 1.4°	14.8° ± 1.0°	13.5° ± 0.6°
Electrical Downtilt		degrees	2-15°		
Impedance		Ohms	50Ω		
VSWR (Return Loss)		---	1.5:1 (-14 dB)		
Passive Intermodulation 3rd Order for 2x20 W Carriers		dBc	-150		
Front-to-Back Ratio, Total Power, ± 30°		dB	23.1	25.0	23.4
First Upper Side Lobe Suppression		dB	20.6	18.4	15.0
Cross Polar Discrimination Over Sector		dB	13.1	6.8	11.4
Cross Polar Discrimination (XPD) at Mechanical Boresight (0°)		dB	25.1	22.8	27.4
Maximum Effective Power Per Port		Watts	350 W		
Cross Polar Isolation		dB	26		

Specifications follow BASTA guidelines.

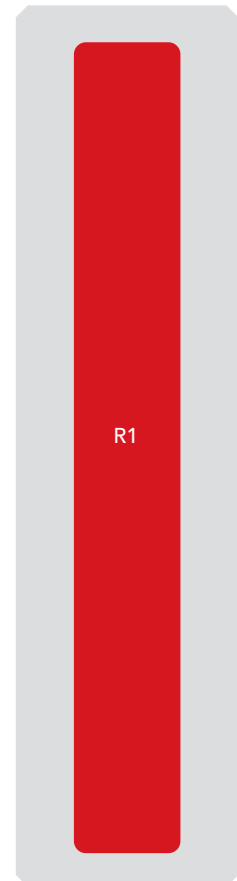
APXVB15B_43-C-I20

BOTTOM VIEW - LABELING



ARRAY LAYOUT

ARRAY	FREQUENCY	CONNECTOR	CONNECTOR TYPE	RET	AISG RET UID
■ R1	698-960 MHz	1-2	(2x) 4.3-10 Female	R1	RFxxxxxxxxxx-R1



The illustration is not shown to scale.

Quoted performance parameters are provided to offer typical, peak or range values only and may vary as a result of normal testing, manufacturing and operational conditions. Extreme operational conditions and/or stress on structural supports is beyond our control. Such conditions may result in damage to this product. Improvements to products may be made without notice.

APXVB15B_43-C-I20

MECHANICAL SPECIFICATIONS

Length	mm (in)	1490 (58.7)
Width	mm (in)	320 (12.6)
Depth	mm (in)	140 (5.5)
Net Weight - Antenna Only	kg (lbs)	15.5 (34.2)
Net Weight - Mounting Hardware Only	kg (lbs)	4.5 (9.9)
Wind Load Rated at 150 km/h (93 mph)	Front	N (lbf) 516 (116)
	Side	N (lbf) 193 (43)
	Rear	N (lbf) 614 (138)
Survival Wind Speed / Rated Wind Speed	km/h (mph)	200 (150)
Connector Type	--	(2x) 4.3-10 Female, (2x) AISG Connectors (1 Male, 1 Female) at Bottom
Radome Color	---	Light Grey RAL7035
Radome Material	---	Fiberglass
Lightning Protection	---	Direct Ground
Shipping	Packing Size (Length x Width x Depth)	mm (in) 1766 x 415 x 235 (69.5 x 16.3 x 9.2)
	Shipping Weight	kg (lbs) 24 (52.9)

ENVIRONMENTAL SPECIFICATIONS

Environmental Standard	---	ETS 300 019
Operating Temperature	degrees	-40° to +60° C (-40° to +140° F)
Product Environmental Compliance	---	Product is RoHS Compliant


Quoted performance parameters are provided to offer typical, peak or range values only and may vary as a result of normal testing, manufacturing and operational conditions. Extreme operational conditions and/or stress on structural supports is beyond our control. Such conditions may result in damage to this product. Improvements to products may be made without notice.

APXVB15B_43-C-I20

ACCESSORIES Accessories may be ordered separately unless otherwise indicated.

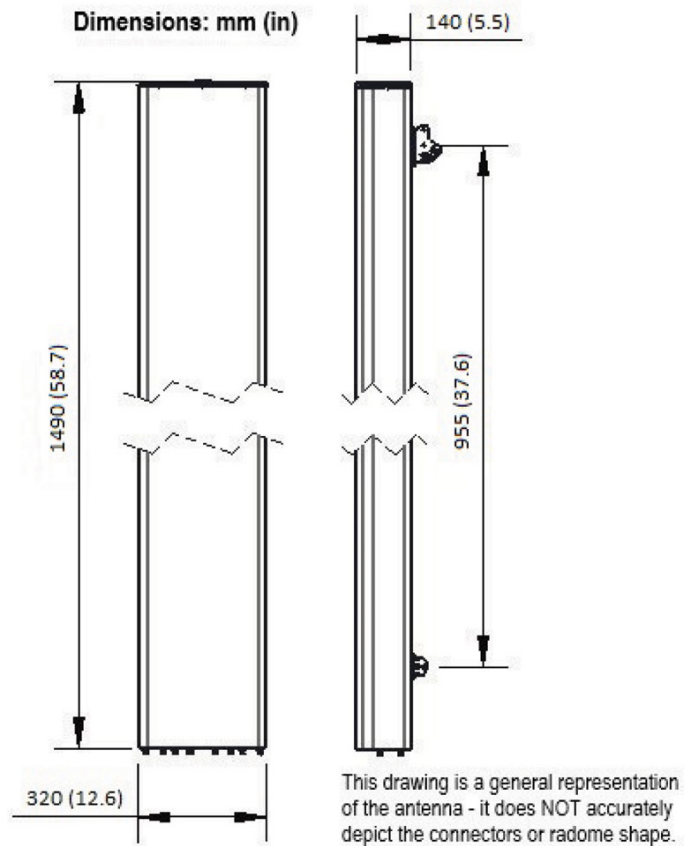
ITEM	MODEL NUMBER	WEIGHT
Beam Tilt Mounting Bracket Kit for Pole Diameter 50-110 mm (2.0-4.3 in) <i>Shipped with antenna</i>	APM50-B1	4.5 kg (9.9 lbs)

INSTALLATION Please read all installation notes before installing product.

	Always attach the antenna using all mounting points.
	Do not install antenna with the connectors facing upwards.

EXTERNAL DOCUMENT LINKS

[APM50 Mounting Kit Series Installation Instructions](#)



NOTES

Specifications follow BASTA guidelines.

For additional mounting information, please check **External Document Links**.

For Radiating Patterns: [Request pattern files](#)