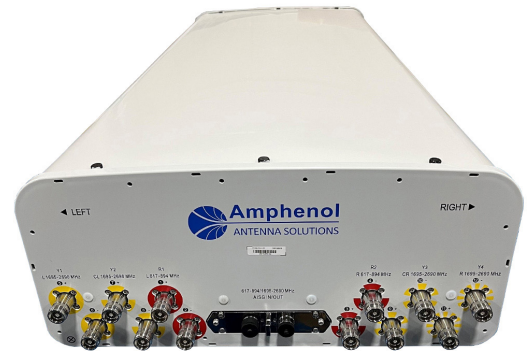


APXVAA4L18N_43-U-I20 APXVAA4L18N_43-V-I20

Features

- Narrow 499 mm radome for reduced windloading and easier zoning
- MIMO 4x4 in low-band and mid-band x2 (L/CL and RC/R)
- Integrated and field replaceable mRET
- ACU model number: ACU-X20-N3
- Compliant with AISG v2.0 and 3GPP
- Mechanical downtilt kit included
- Optional with Direct Pipe No Tilt mounting hardware (Model name suffix -V-I20)



PRODUCT OVERVIEW	Frequency Range (MHz)	(2x) 617-894		(4x) 1695-2690				
	Array	■ R1	■ R2	■ Y1	■ Y2	■ Y3	■ Y4	
	Connector	1-2	3-4	5-6	7-8	9-10	11-12	
		4 PORTS		8 PORTS				
	Polarization	XPOL			XPOL			
	Azimuth Beamwidth (avg)	65°			65°			
	Electrical Downtilt	2-12°			2-12°			
	Dimensions	1823 x 499 x 215 mm (71.8 x 19.7 x 8.5 in)						

ORDERING OPTIONS

Select from the following ordering options

ANTENNA MODEL NUMBER	CONFIGURATION	MOUNTING HARDWARE	MOUNTING PIPE DIAMETER	SHIPPING WEIGHT	MOUNTING HARDWARE WEIGHT
APXVAA4L18N_43-U-I20	ACU-X20-N3 Field Replaceable RET Included	APM40-5E Beam Tilt Kit and APM40-E10T (included)	60-120 mm (2.4-4.7 in)	45.7 kg (101 lbs)	8.5 kg (19 lbs)
APXVAA4L18N_43-V-I20	ACU-X20-N3 Field Replaceable RET Included	APM40-1E Direct Pipe No Tilt and APM40-E10T (included)	60-120 mm (2.4-4.7 in)	43.5 kg (96 lbs)	6.3 kg (14 lbs)



Quoted performance parameters are provided to offer typical, peak or range values only and may vary as a result of normal testing, manufacturing and operational conditions. Extreme operational conditions and/or stress on structural supports is beyond our control. Such conditions may result in damage to this product. Improvements to products may be made without notice.

APXVAA4L18N_43-U-I20

APXVAA4L18N_43-V-I20

ELECTRICAL SPECIFICATIONS

■ R1 ■ R2

Frequency Range		MHz	(2x) 617-894		
		MHz	617-698	698-806	806-894
Polarization		---	±45°		
Gain	Over all Tilts	dBi	14.1 ± 0.7	14.6 ± 0.8	14.4 ± 0.5
	Max Gain	dBi	14.8	15.4	14.9
Azimuth Beamwidth (3 dB)		degrees	71° ± 8°	66° ± 8°	67° ± 8°
Elevation Beamwidth (3 dB)		degrees	14.1° ± 1.0°	12.9° ± 1.0°	11.4° ± 1.0°
Electrical Downtilt		degrees	2-12°		
Impedance		Ohms	50Ω		
VSWR (Return Loss)		---	1.5:1 (-14 dB)		
Passive Intermodulation		dBc	-153 (3rd Order for 2x20 W Carriers)		
Front-to-Back Ratio, Total Power, ± 30°		dB	17	19	20
Front-to-Back at 180° Copolar		dB	30	28	29
Upper Side Lobe Suppression, Peak to +20°		dB	21	22	21
First Upper Side Lobe		dB	19	21	22
Cross-Pol Over Sector		dB	9	6	3
Cross Polar Discrimination (XPD) at Mechanical Boresight (0°)		dB	17	19	18
Maximum Effective Power Per Port		Watts	300 W		
Cross Polar Isolation		dB	25	25	25
Interband Isolation		dB	20	20	20

ELECTRICAL SPECIFICATIONS

■ Y1 ■ Y2 ■ Y3 ■ Y4

Frequency Range		MHz	(4x) 1695-2690				
		MHz	1695-1880	1850-1990	1920-2200	2200-2500	2500-2690
Polarization		---	±45°				
Gain	Over all Tilts	dBi	16.8 ± 0.9	17.4 ± 0.4	17.9 ± 0.7	18.0 ± 0.6	17.6 ± 0.7
	Max Gain	dBi	17.7	17.8	18.6	18.6	18.3
Azimuth Beamwidth (3 dB)		degrees	69° ± 9°	67° ± 6°	60° ± 8°	53° ± 8°	55° ± 5°
Elevation Beamwidth (3 dB)		degrees	5.8° ± 0.4°	5.4° ± 0.3°	4.9° ± 0.4°	4.4° ± 0.3°	4.2° ± 0.3°
Electrical Downtilt		degrees	2-12°				
Impedance		Ohms	50Ω				
VSWR (Return Loss)		---	1.5:1 (-14 dB)				
Passive Intermodulation		dBc	-153 (3rd Order for 2x20 W Carriers)				
Front-to-Back Ratio, Total Power, ± 30°		dB	22	22	22	22	22
Front-to-Back at 180° Copolar		dB	28	28	28	29	30
Upper Side Lobe Suppression, Peak to +20°		dB	15	16	16	15	11
First Upper Side Lobe		dB	19	20	19	19	20
Cross-Pol Over Sector		dB	7	5	2	1	2
Cross Polar Discrimination (XPD) at Mechanical Boresight (0°)		dB	19	18	17	18	16
Maximum Effective Power Per Port		Watts	300 W				
Cross Polar Isolation		dB	25	25	25	25	25
Interband Isolation		dB	20	20	20	20	20

Quoted performance parameters are provided to offer typical, peak or range values only and may vary as a result of normal testing, manufacturing and operational conditions. Extreme operational conditions and/or stress on structural supports is beyond our control. Such conditions may result in damage to this product. Improvements to products may be made without notice.

APXVAA4L18N_43-U-I20

APXVAA4L18N_43-V-I20

RET ACTUATOR

Frequency	MHz	617-894	1695-2690
Model Number	---	ACU-X20-N3	
Number of RET Actuators	---	1	
RET ID	---	R1	Y1 and Y2
Input Voltage	Vdc	10-30V	
Power Consumption	Idle State, maximum	Watts	0.5W @ 10V, 1.5W @ 30V
	Normal Conditions, maximum	Watts	4W @ 10V, 9W @ 30V
Protocol	---	3GPP / AISG v2.0	
Tilt Change Duration	---	Less than 15 seconds, typical (may vary depending on antenna type and outdoor temperature)	
Precision	degrees	± 0.1°	
Tilt Change Capability	---	18,000 minimum	
RET Interface	---	One AISG Male and One AISG Female	
Field Replaceable Unit	---	Yes	
Location	---	Semi-internal	

Quoted performance parameters are provided to offer typical, peak or range values only and may vary as a result of normal testing, manufacturing and operational conditions. Extreme operational conditions and/or stress on structural supports is beyond our control. Such conditions may result in damage to this product. Improvements to products may be made without notice.

APXVAA4L18N_43-U-I20

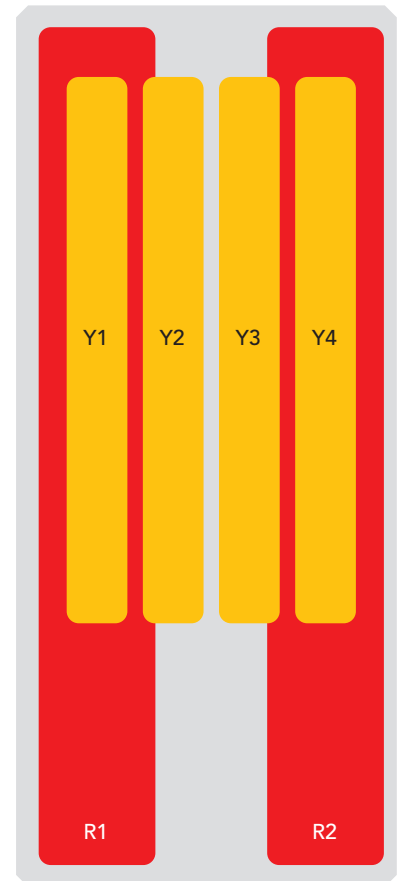
APXVAA4L18N_43-V-I20

BOTTOM VIEW - LABELING



ARRAY LAYOUT

ARRAY	FREQUENCY	CONNECTOR	CONNECTOR TYPE	RET	AISG RET UID
■ R1	617-894 MHz	1-2	(2x) 4.3-10 Female	R1	RFxxxxxxxxxx-2R1
■ R2	617-894 MHz	3-4	(2x) 4.3-10 Female		
■ Y1	1695-2690 MHz	5-6	(2x) 4.3-10 Female	Y1	RFxxxxxxxxxx-2Y1
■ Y2	1695-2700 MHz	7-8	(2x) 4.3-10 Female		
■ Y3	1695-2690 MHz	9-10	(2x) 4.3-10 Female	Y2	RFxxxxxxxxxx-2Y2
■ Y4	1695-2690 MHz	11-12	(2x) 4.3-10 Female		



The illustration is not shown to scale.

Quoted performance parameters are provided to offer typical, peak or range values only and may vary as a result of normal testing, manufacturing and operational conditions. Extreme operational conditions and/or stress on structural supports is beyond our control. Such conditions may result in damage to this product. Improvements to products may be made without notice.

APXVAA4L18N_43-U-I20

APXVAA4L18N_43-V-I20

MECHANICAL SPECIFICATIONS

Length	mm (in)	1823 (71.8)	
Width	mm (in)	499 (19.7)	
Depth	mm (in)	215 (8.5)	
Net Weight - Antenna Only	kg (lbs)	31 (69)	
Wind Load Rated at 150 km/h (93 mph)	Front	N (lbf)	609 (137)
	Side	N (lbf)	572 (129)
	Rear	N (lbf)	707 (159)
	Maximum	N (lbf)	1186 (267)
Survival Wind Speed	km/h (mph)	240 (150)	
Connector Type	--	(12x) 4.3-10 Female at Bottom	
Radome Color	---	Light Grey RAL7035	
Radome Material	---	ASA	
Lightning Protection	---	Direct Ground	
Shipping	Packing Size (Length x Width x Depth)	mm (in)	2030 x 560 x 285 (79.9 x 22 x 11.2)

ENVIRONMENTAL SPECIFICATIONS

Environmental Standard	---	ETS 300 019
Operating Temperature	degrees	-40° to +60° C (-40° to +140° F)
Product Environmental Compliance	---	Product is RoHS Compliant

Quoted performance parameters are provided to offer typical, peak or range values only and may vary as a result of normal testing, manufacturing and operational conditions. Extreme operational conditions and/or stress on structural supports is beyond our control. Such conditions may result in damage to this product. Improvements to products may be made without notice.

APXVAA4L18N_43-U-I20 APXVAA4L18N_43-V-I20

ACCESSORIES

Accessories may be ordered separately unless otherwise indicated.

ITEM	MODEL NUMBER	WEIGHT
Beam Tilt Mounting Bracket Kit and Interface Bracket for Pole Diameter 60-120 mm (2.4-4.7 in) <i>Refer to ordering options</i>	APM40-5E and APM40-E10T	8.5 kg (19 lbs)
Direct Pipe No Tilt Bracket Kit and Interface Bracket for Pole Diameter 60-120 mm (2.4-4.7 in) <i>Refer to ordering options</i>	APM40-1E and APM40-E10T	6.3 kg (14 lbs)

INSTALLATION

Please read all installation notes before installing product.

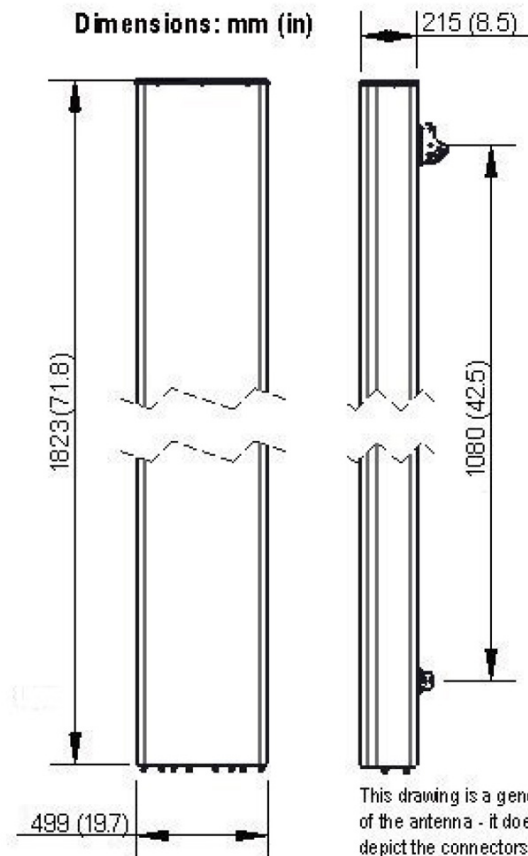


Always attach the antenna using all mounting points.

Do not install antenna with the connectors facing upwards.

EXTERNAL DOCUMENT LINKS

[APM40 Mounting Kit Series Installation Instructions](#)



NOTES

Specifications follow BASTA guidelines.

For additional mounting information, please check **External Document Links**.

For Radiating Patterns: [Request pattern files](#)