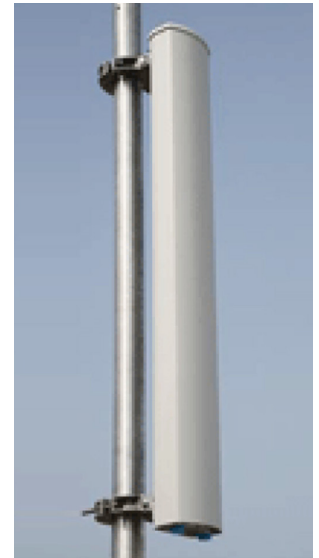


APXV18-206517S-C-A20



Features

This x-polarized variable tilt antenna provides exceptional suppression of all upper sidelobes at all downtilt angles. It also features a wide downtilt range. This antenna is optimized for performance across the entire AWS frequency band (1710-2155 MHz). The antenna comes pre-connected with one antenna control unit (ACU).

- Variable electrical downtilt - provides enhanced precision in controlling intercell interference. The tilt is infield adjustable 0-10°.
- High suppression of all upper sidelobes (typically < -20dB)
- Gain tracking - difference between (1695-1755 MHz) and (2110-2200 MHz) < 1dB
- Azimuth beamwidth difference between (1695-1755 MHz) and (2110-2200 MHz) < 5°
- Low profile for low visual impact
- Dual polarization; broadband design
- Includes AISG 2.0 compatible ACU-A20-S antenna control unit

PRODUCT OVERVIEW	Frequency Range (MHz)	1695-2200
	Connector	2 PORTS
	Polarization	Dual Pol ±45°
	Azimuth Beamwidth (avg)	65°
	Gain	18.8 dBi
	Electrical Downtilt	Variable 0-10°
	Dimensions	1953 x 169 x 80 mm (76.0 x 6.7 x 3.2 in)

ORDERING OPTIONS Select from the following ordering options

ANTENNA MODEL NUMBER	CONFIGURATION	MOUNTING HARDWARE	MOUNTING PIPE DIAMETER	SHIPPING WEIGHT
APXV18-206517S-C-A20	ACU-A20-S Field Replaceable RET Included	APM40-2 Beam Tilt Kit Included	60-120 mm (2.4-4.7 in)	20 kg (44 lbs)

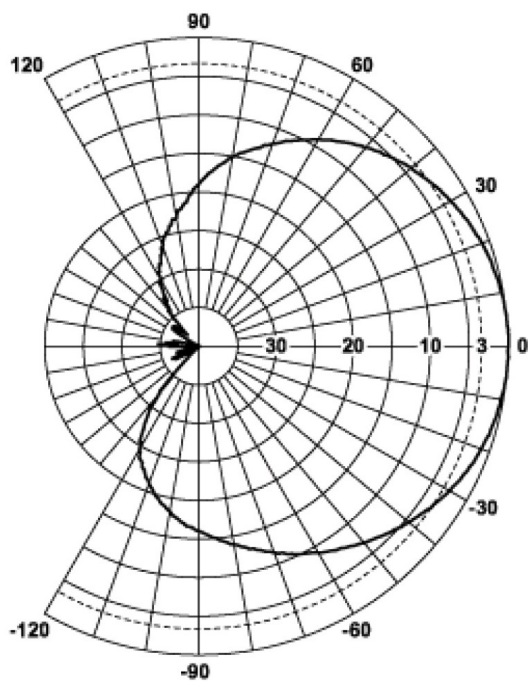


Quoted performance parameters are provided to offer typical, peak or range values only and may vary as a result of normal testing, manufacturing and operational conditions. Extreme operational conditions and/or stress on structural supports is beyond our control. Such conditions may result in damage to this product. Improvements to products may be made without notice.

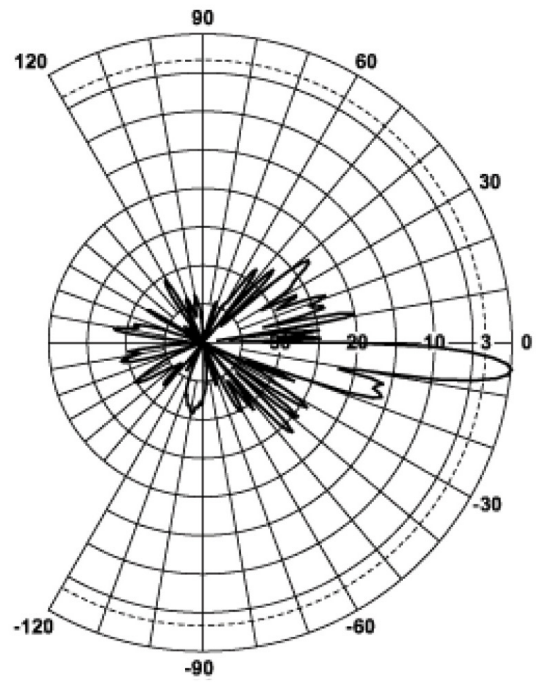
APXV18-206517S-C-A20

ELECTRICAL SPECIFICATIONS

Frequency Range	MHz	1695-2200
Polarization	---	±45°
Gain	dBi	18.8 average across band
Beamwidth Approximate	degrees	65°
Azimuth Beamwidth (3 dB)	degrees	65° ± 5.0° (65.1° average across band)
Elevation Beamwidth (3 dB)	degrees	4.4° to 5.5°
Electrical Downtilt	degrees	Variable 0-10°
Impedance	Ohms	50Ω
VSWR	---	< 1.5:1
Passive Intermodulation 3rd Order for 2x20 W Carriers	dBc	> 150, (155 Typical)
Front-to-Back Ratio	dB	> 26 (Typically 29)
First Upper Side Lobe Suppression	dB	Typically > 20
Maximum Effective Power Per Port	Watts	300 W
Isolation Between Ports	dB	> 30
Operating Band	---	3G/UMTS (Single, Broad, Dual and Triple-Band) AWS Band (1695-1755, 2110-2200 MHz)



AZIMUTH PATTERN



ELEVATION PATTERN

Quoted performance parameters are provided to offer typical, peak or range values only and may vary as a result of normal testing, manufacturing and operational conditions. Extreme operational conditions and/or stress on structural supports is beyond our control. Such conditions may result in damage to this product. Improvements to products may be made without notice.

APXV18-206517S-C-A20

MECHANICAL SPECIFICATIONS

Length	mm (in)	1953 (76.0)
Width	mm (in)	169 (6.7)
Depth	mm (in)	80 (3.2)
Net Weight - Antenna Only	kg (lbs)	12 (26)
Net Weight - Mounting Hardware Only	kg (lbs)	3.4 (7.5)
Wind Load Rated at 150 km/h (93 mph)	Front	N (lbf) 568.1 (127.7)
	Side	N (lbf) 331.5 (74.5)
	Rear	N (lbf) 274.4 (61.7)
	Maximum	N (lbf) 568.1 (127.7)
Survival Wind Speed / Rated Wind Speed	km/h (mph)	200 (125)
Connector Type	---	(2x) 7-16 Long Neck Female at Bottom
Radome Color	---	Light Grey RAL7035
Radiating Element Material	---	Brass
Reflector Material	---	Aluminum
Lightning Protection	---	Direct Ground
Shipping	Packing Size (Length x Width x Depth)	mm (in) 1950 x 230 x 189 (76.8 x 9.0 x 7.4)
	Shipping Weight	kg (lbs) 20 (44)

ENVIRONMENTAL SPECIFICATIONS

Environmental Standard	---	ETS 300 019
Operating Temperature	degrees	-40° to +60° C (-40° to +140° F)
Product Environmental Compliance	---	Product is RoHS Compliant


Quoted performance parameters are provided to offer typical, peak or range values only and may vary as a result of normal testing, manufacturing and operational conditions. Extreme operational conditions and/or stress on structural supports is beyond our control. Such conditions may result in damage to this product. Improvements to products may be made without notice.

APXV18-206517S-C-A20

ACCESSORIES Accessories may be ordered separately unless otherwise indicated.

ITEM	MODEL NUMBER	WEIGHT
Beam Tilt Mounting Bracket Kit for Pole Diameter 60-120 mm (2.4-4.7 in) <i>Shipped with antenna</i>	APM40-2	3.4 kg (7.5 lbs)

INSTALLATION Please read all installation notes before installing product.

	Always attach the antenna using all mounting points.
	Do not install antenna with the connectors facing upwards.

EXTERNAL DOCUMENT LINKS

[APM40 Mounting Kit Series Installation Instructions](#)

NOTES

For additional mounting information, please check **External Document Links**.

For Radiating Patterns: [Request pattern files](#)