

Amphenol Antenna Solutions



**APM50-BH MOUNTING KIT
INSTALLATION INSTRUCTIONS**

REV. 4.0 | 2024.05

Mounting Instructions for APM50-BH Kit

SUMMARY

| | |
|------------------------------------|---|
| 1. Applications..... | 3 |
| 2. Mechanical Specifications | 3 |
| 3. Assembly and Installation | 3 |
| 4. Installation Tools | 3 |
| 5. Installation..... | 3 |

Mounting Instructions for APM50-BH Kit

1. APPLICATIONS

The APM50 kits are mounting hardware options to be used for Base Station antennas.

2. MECHANICAL SPECIFICATIONS

- Pole Diameter: 65-115 mm
- Material: SUS316
- Weight: 0.1 kg

3. ASSEMBLY AND INSTALLATION

Please read this manual before installation.

1. Only qualified personnel are allowed to install the antenna.
2. The appearances of the antennas shown in the figures is only for reference and may differ from the actual one.
3. Before the installation, check the appearance of the brackets according to this guide. The installation methods vary with the component appearance. The installation procedures described in this guide must be strictly followed.
4. The protection caps of antenna ports not connecting to jumpers must not be removed. Meanwhile, waterproof measures must be taken to protect these antenna ports.

4. INSTALLATION TOOLS



TORQUE VALUES

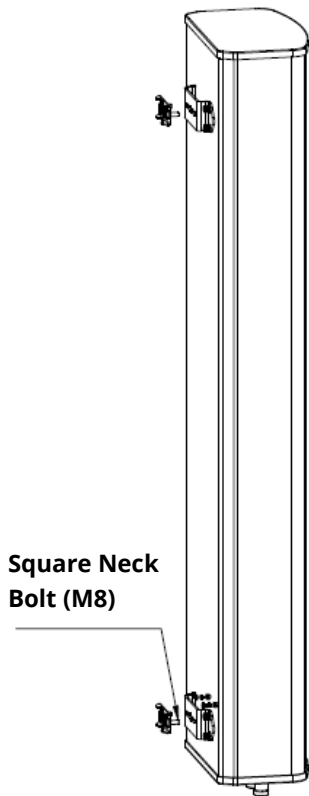
| NUT | TORQUE | WRENCH TYPE |
|-------|----------|-------------|
| M8 | 18-22 Nm | 13 mm |
| Clamp | 10-12 Nm | 8 mm |

5. INSTALLATION

Mounting Instructions for APM50-BH Kit

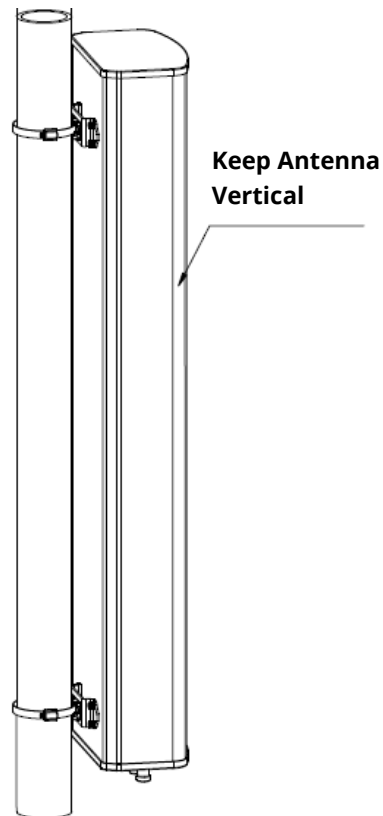
Step 1

Pre-assemble mounting brackets to the antenna with four M8 bolts.



Step 2

1. Loosen nut of hose clamp and assemble into the Mounting brackets.
2. Tighten nut of hose clamps to fix antenna.



Mounting Instructions for APM50-BH Kit

NAR

Conover & Meriden
+1 (779) 970-1605
Technical Support
support@amphenol-antennas.com

APAC

Shanghai
+86 (21) 3773 8888
Technical Support
apac.bsa.support@amphenol-antennas.com

EMEA & LATAM

Amboise & Lannion
Technical Support
techsupport@amphenol-antennas.com