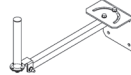
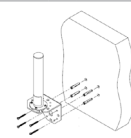
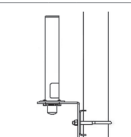
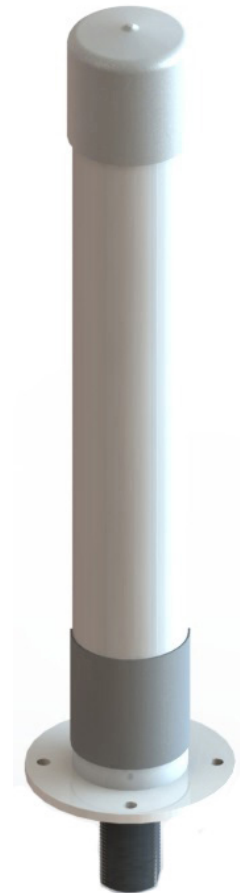


# 7825700

Dual Band | Omni | VV-Pol | 360° / 360° | 1.87 / 3.4 dBi | Fixed Tilt | Indoor / Outdoor

- Dual Band, VV-Pol, fixed tilt, omni antenna
- Versatile size for a variety of applications
- For indoor and outdoor use

Ordering Options		Model Number					
Antenna with N-Type Connector		7825700					
Electrical Characteristics		696-960 MHz		1710-2700 MHz			
Frequency Band (MHz)		696-806	806-960	1710-1880	1850-1990	1900-2170	2200-2700
Polarisation		Vertical		Vertical			
Horizontal Beamwidth		360°	360°	360°	360°	360°	360°
Vertical Beamwidth		87.7°	68.3°	44.4°	40.3°	60.3°	36.1°
Gain		1.87 dBi	1.24 dBi	2.5 dBi	3.4 dBi	2.8 dBi	2.9 dBi
Impedance		50Ω					
VSWR		< 2.5:1		1710-2170 MHz: < 2.0:1 2170-2700 MHz: < 2.5:1			
Passive Intermodulation (2x20W)		-153 dBc *PIM value only applicable at date of manufacture					
Input Power		50 W					
Total Number of Connectors		Antenna has 1 connector located at the bottom					
Connectors Per Band, Type, Location	696-960 MHz / 1710-2700 MHz	1 Connector / N-Type Female, Bottom					
Mechanical Characteristics							
Radome Color		White					
Dimensions (Length x Diameter)		205 x Ø30 mm			8.1 x Ø1.2 in		
Dimensions with Connector (L x D)		234 x Ø30 mm			9.2 x Ø1.2 in		
Weight without Mounting Bracket		0.11 kg			0.24 lbs		
Wind Load (160 km/hr or 100 mph)		4 N			1.0 lbf		
Survival Wind Speed		241 km/hr			150 mph		
Environmental Characteristics							
Environmental Protection		IP54					
Mounting Characteristics							
All mounting bracket kits are ordered separately unless otherwise indicated. Select from the options listed below.							
Mounting interface is four Ø3.4 mm (0.1 in) holes equally spaced on a Ø41 mm (1.6 in) bolt circle							
Select from the following Mounting Options:		Part Number	Image	Attach to Pipe Diameter		Weight	
Universal Wall / Ceiling Mounting Kit		505-173-5-003		---		2.7 kg 6 lbs	
Wall Mounting Kit		XSL9254316		---		0.5 kg 1.1 lbs	
Wall or Pole Mounting Kit		XSL9254317		30-53 mm 1.2-2.0 in		0.5 kg 1.1 lbs	



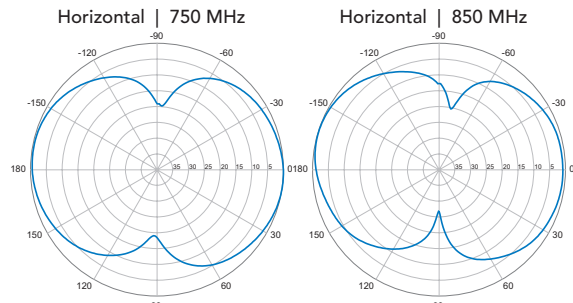
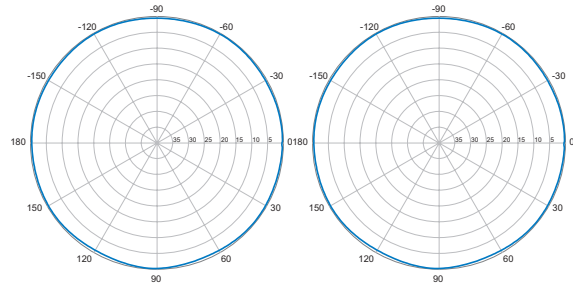
This model is available in the iBwave In-Building Network Components Database - [www.ibwavecomponents.com](http://www.ibwavecomponents.com)

Quoted performance parameters are provided to offer typical, peak or range values only and may vary as a result of normal testing, manufacturing and operational conditions. Extreme operational conditions and/or stress on structural supports is beyond our control. Such conditions may result in damage to this product. Improvements to products may be made without notice.

7825700

Dual Band | Omni | VV-Pol | 360° / 360° | 1.87 / 3.4 dBi | Fixed Tilt | Indoor / Outdoor

**696-960 MHz**



**1710-2700 MHz**

