

6863100

Dual Band | Panel Antenna | XX-Pol | 66° / 64° | 16.5 / 18.6 dBi | Variable Tilt

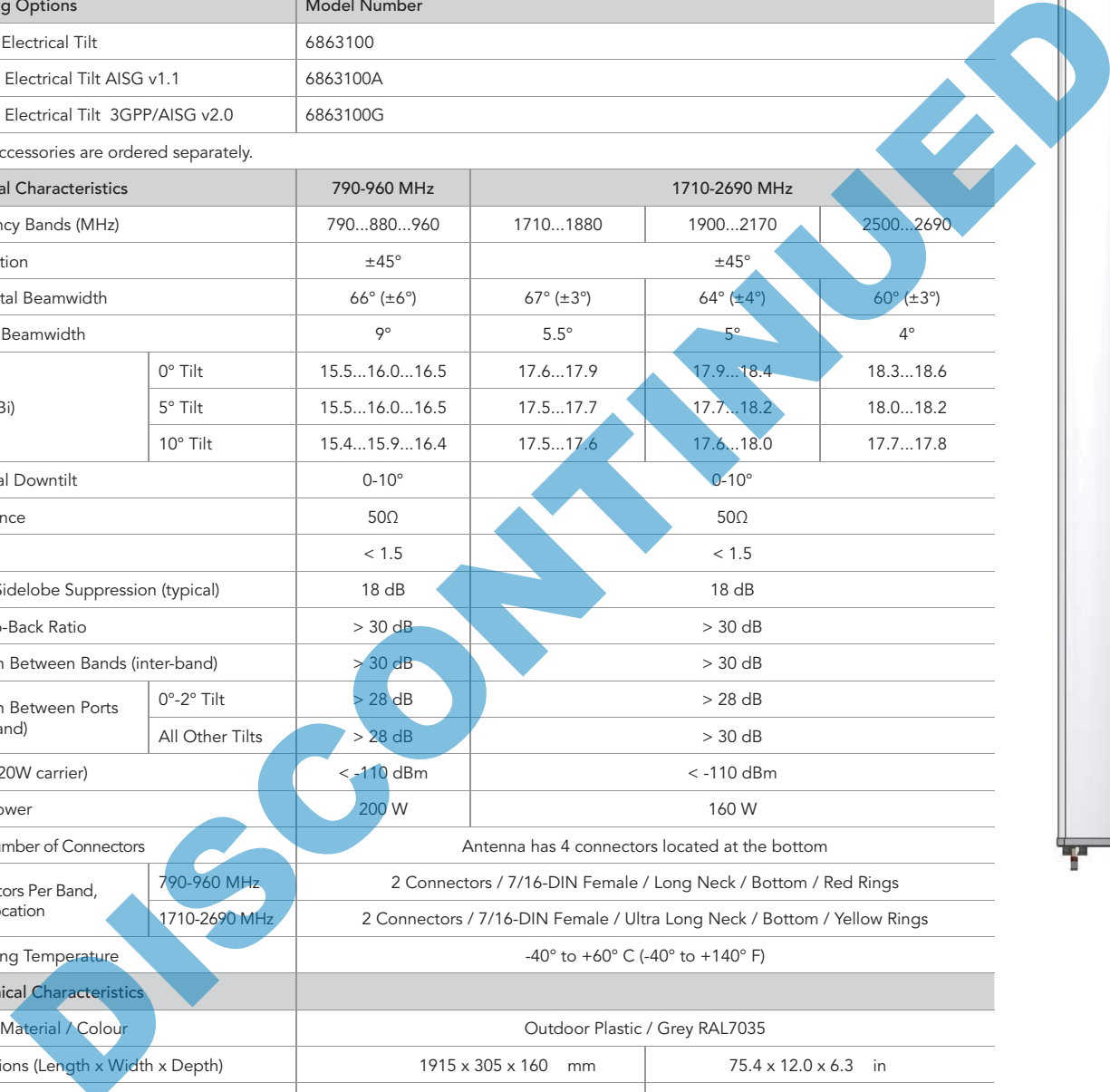
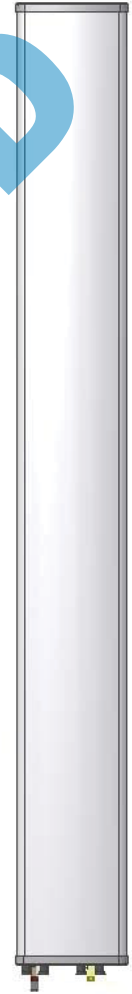
- Dual Band, XX-Pol, variable tilt, panel antenna with 4 connectors
- Independent tilt on each band 0-10° / 0-10°
- Available as a Manual or Remote Electrical Tilt Antenna, AISG v1.1 or 3GPP/AISG v2.0
- Patented internal RET actuator adds no additional length to the antenna (field replaceable)

UltraLine

Ordering Options	Model Number
Manual Electrical Tilt	6863100
Remote Electrical Tilt AISG v1.1	6863100A
Remote Electrical Tilt 3GPP/AISG v2.0	6863100G

Other accessories are ordered separately.



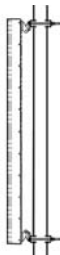

Electrical Characteristics		790-960 MHz	1710-2690 MHz		
Frequency Bands (MHz)		790...880...960	1710...1880	1900...2170	2500...2690
Polarisation		±45°	±45°		
Horizontal Beamwidth		66° (±6°)	67° (±3°)	64° (±4°)	60° (±3°)
Vertical Beamwidth		9°	5.5°	5°	4°
Gain (dBi)	0° Tilt	15.5...16.0...16.5	17.6...17.9	17.9...18.4	18.3...18.6
	5° Tilt	15.5...16.0...16.5	17.5...17.7	17.7...18.2	18.0...18.2
	10° Tilt	15.4...15.9...16.4	17.5...17.6	17.6...18.0	17.7...17.8
Electrical Downtilt		0-10°	0-10°		
Impedance		50Ω	50Ω		
VSWR		< 1.5	< 1.5		
Upper Sidelobe Suppression (typical)		18 dB	18 dB		
Front-to-Back Ratio		> 30 dB	> 30 dB		
Isolation Between Bands (inter-band)		> 30 dB	> 30 dB		
Isolation Between Ports (intra-band)	0°-2° Tilt	> 28 dB	> 28 dB		
	All Other Tilts	> 28 dB	> 30 dB		
IM3 (2x20W carrier)		< -110 dBm	< -110 dBm		
Input Power		200 W	160 W		
Total Number of Connectors		Antenna has 4 connectors located at the bottom			
Connectors Per Band, Type, Location	790-960 MHz	2 Connectors / 7/16-DIN Female / Long Neck / Bottom / Red Rings			
	1710-2690 MHz	2 Connectors / 7/16-DIN Female / Ultra Long Neck / Bottom / Yellow Rings			
Operating Temperature		-40° to +60° C (-40° to +140° F)			
Mechanical Characteristics					
Shroud Material / Colour		Outdoor Plastic / Grey RAL7035			
Dimensions (Length x Width x Depth)		1915 x 305 x 160 mm		75.4 x 12.0 x 6.3 in	
Weight without Mounting Brackets		22.5 kg		49.6 lbs	
Operational Wind Speed		160 km/hr		100 mph	
Survival Wind Speed		200 km/hr		124 mph	
Wind Loads (160 km/hr or 100 mph) EN1991-4-1	Front	870 N		196 lbf	
	Lateral	396 N		89 lbf	
	Rear	852 N		192 lbf	



Quoted performance parameters are provided to offer typical, peak or range values only and may vary as a result of normal testing, manufacturing and operational conditions. Extreme operational conditions and/or stress on structural supports is beyond our control. Such conditions may result in damage to this product. Improvements to products may be made without notice.

6863100

Dual Band | Panel Antenna | XX-Pol | 66° / 64° | 16.5 / 18.6 dBi | Variable Tilt

Packaging				
Packaging Dimensions (Height x Width x Depth)	2170 x 400 x 280 mm		85.4 x 15.7 x 11.0 in	
Packaging Weight	33 kg		72.8 lbs	
Environmental Characteristics				
Environmental	ETS 300 019			
RoHS Compliant	Yes			
Electrical Downtilt Control				
Electrical downtilt for each band can be controlled separately. Tilt indicator(s) are covered by removable transparent cap(s).				
Manual Electrical Tilt (MET) Control	A coloured knob at the end of the tilt indicator allows change of the tilt without need of a tool. The knob colour is identical to the corresponding connector ring colour. To access the knob, remove the cap by turning it counter-clockwise. It is re-installed by opposite rotation. Do not remove the transparent cap(s) from the antenna.			
Remote Electrical Tilt (RET) Control	The remote control of the electrical tilt is managed by a module (MDCU) totally inserted at the bottom of the antenna. One single module controls individually the tilt of each band (no need of daisy chain cables between the bands). This module does not add any additional length at the bottom of the antenna. For RET control, the transparent cap must be in place and locked. The tilt angle indicator always remains visible and the antenna still has manual tilt control (manual override).			
RET Module	The RET module is factory installed and does not need to be ordered separately.			
	Part Number for AISG v1.1 protocol:	MDCU-A0000	One unit installed in 6863100A	
	Part Number for 3GPP/AISG v2.0 protocol:	MDCU-G0000	One unit installed in 6863100G	
Important Installation Instructions		In order to operate RET control, the transparent caps covering the tilt adjustment indicators must be engaged and locked. Do not cut them from the antenna.		
		Do not install the antenna with the connectors facing upward.		
Mounting Options				
	Part Number	Image	Fits Pipe Diameter	Weight
All mounting bracket kits are ordered separately unless otherwise indicated. Select from the options listed below.				
2-Point Mounting Bracket Kit	0900181/00		48-115 mm 1.9-4.5 in	3.4 kg 7.5 lbs
2-Point Mounting Bracket Kit	0900182/00		70-150 mm 2.8-5.9 in	3.9 kg 8.6 lbs
Kit to Add Mechanical Tilt (0°-10°) to Above Brackets (optional)	0900397/00		---	3.0 kg 6.6 lbs

Quoted performance parameters are provided to offer typical, peak or range values only and may vary as a result of normal testing, manufacturing and operational conditions. Extreme operational conditions and/or stress on structural supports is beyond our control. Such conditions may result in damage to this product. Improvements to products may be made without notice.

6863100

Dual Band | Panel Antenna | XX-Pol | 66° / 64° | 16.5 / 18.6 dBi | Variable Tilt

Bottom View of Antenna



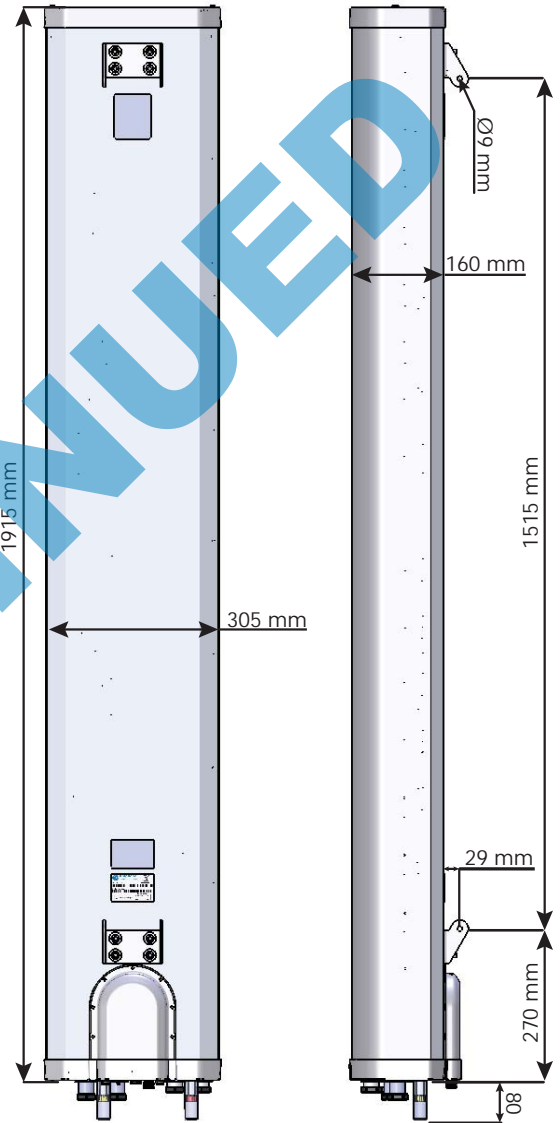
Location of the MDCU
for RET Control

Tilt indicators covered by transparent caps.
Manual adjustment is accessed by removing the caps.
Knob colours are the same as the connectors.



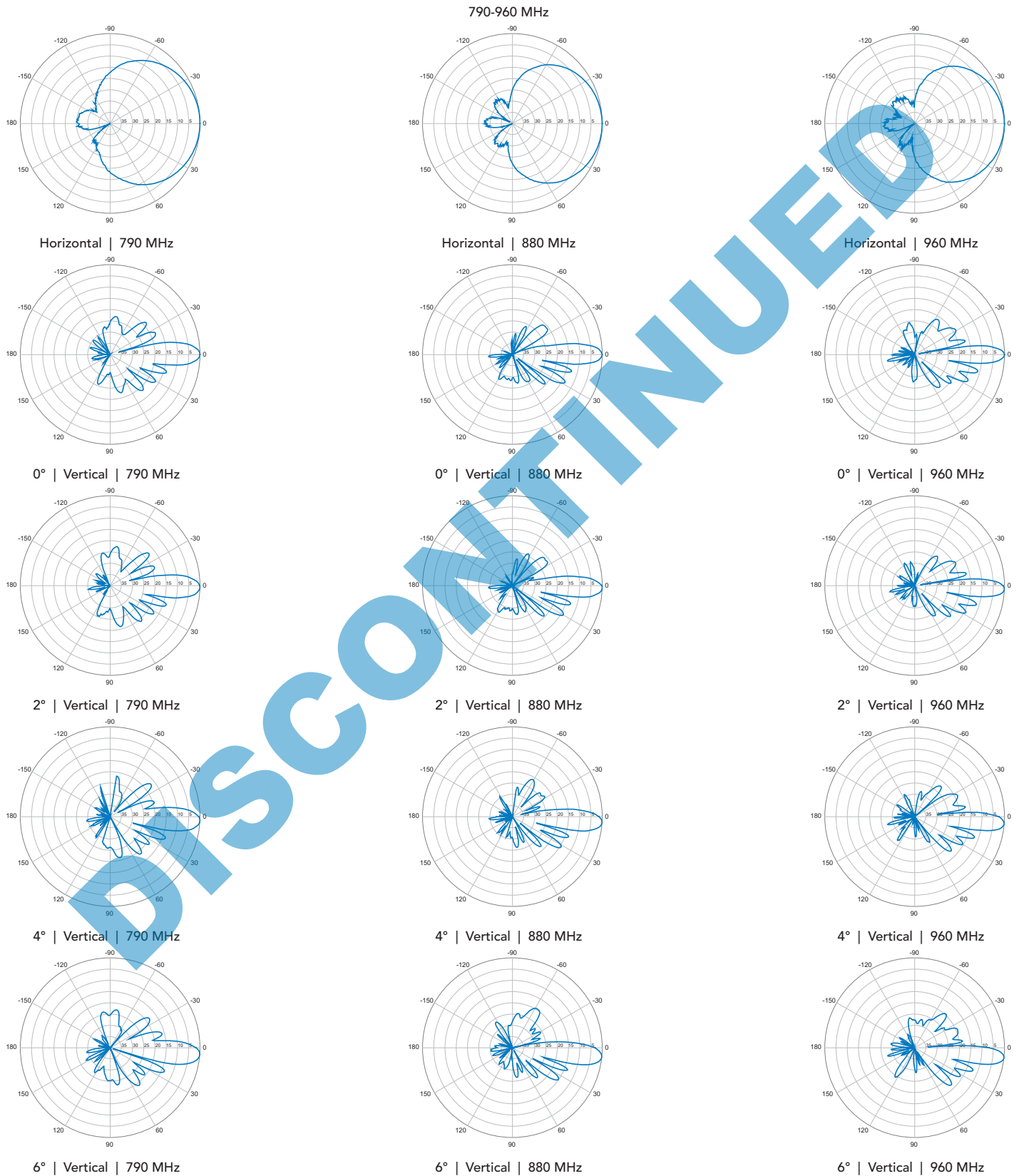
In order to operate RET control, the transparent caps covering the tilt adjustment indicators must be engaged and locked. Do not cut them from the antenna.

Dimensions



6863100

Dual Band | Panel Antenna | XX-Pol | 66° / 64° | 16.5 / 18.6 dBi | Variable Tilt



Quoted performance parameters are provided to offer typical, peak or range values only and may vary as a result of normal testing, manufacturing and operational conditions. Extreme operational conditions and/or stress on structural supports is beyond our control. Such conditions may result in damage to this product. Improvements to products may be made without notice.

6863100

Dual Band | Panel Antenna | XX-Pol | 66° / 64° | 16.5 / 18.6 dBi | Variable Tilt

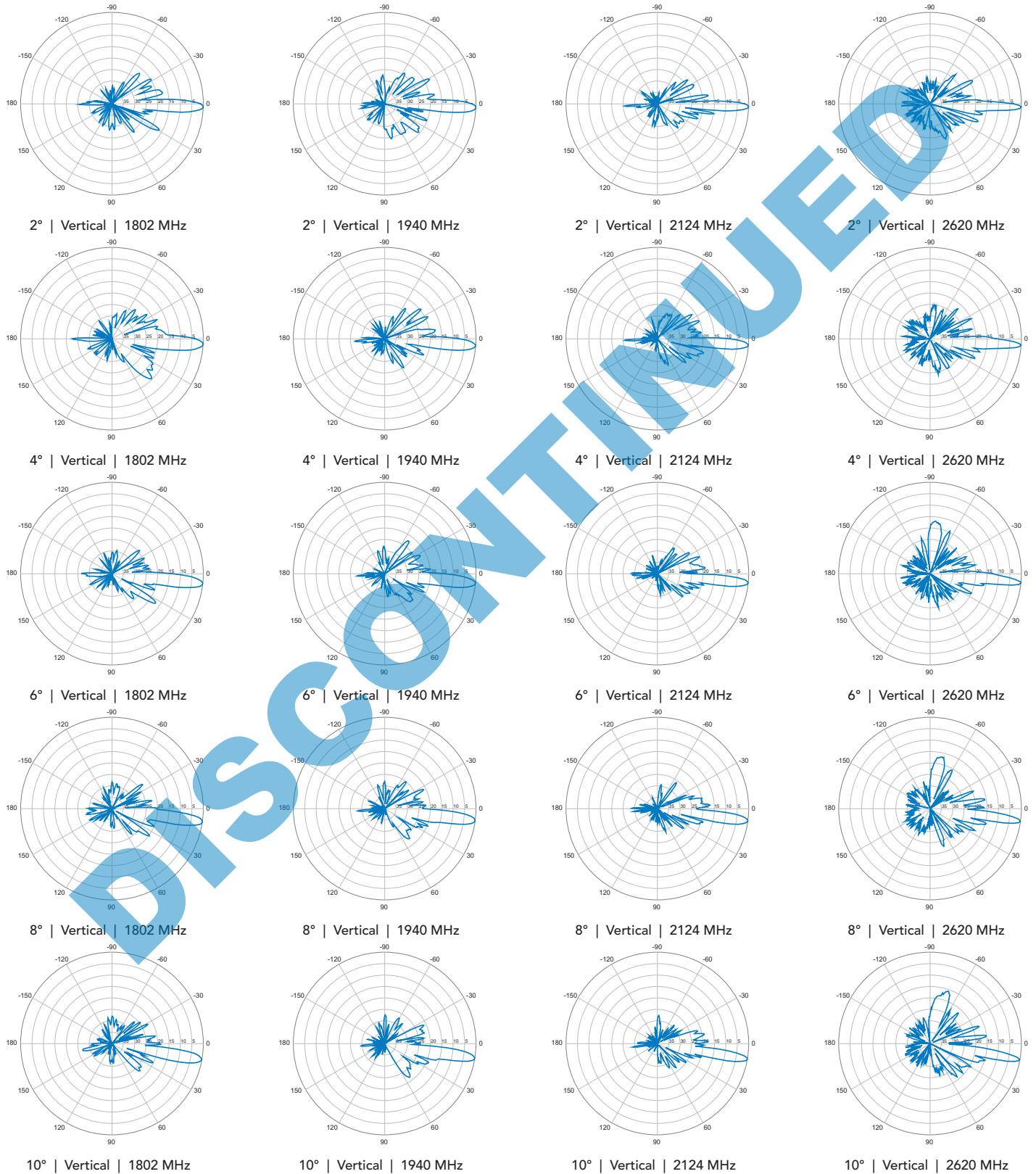


Quoted performance parameters are provided to offer typical, peak or range values only and may vary as a result of normal testing, manufacturing and operational conditions. Extreme operational conditions and/or stress on structural supports is beyond our control. Such conditions may result in damage to this product. Improvements to products may be made without notice.

6863100

Dual Band | Panel Antenna | XX-Pol | 66° / 64° | 16.5 / 18.6 dBi | Variable Tilt

1710-2690 MHz



Quoted performance parameters are provided to offer typical, peak or range values only and may vary as a result of normal testing, manufacturing and operational conditions. Extreme operational conditions and/or stress on structural supports is beyond our control. Such conditions may result in damage to this product. Improvements to products may be made without notice.