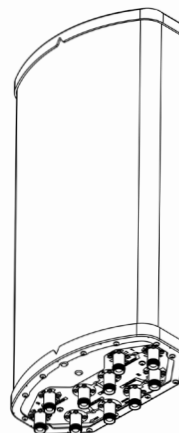


2U3MX065X06F_{xy}s0

Features

- Fixed tilt panel antenna with 10 connectors
- Ultra-wide band performance
- Ideal solution for Small Cell applications
- This antenna meets the requirements of the U-NII



PRODUCT OVERVIEW	Frequency Range (MHz)	MID		CBRS		LAA
		(2x) 1695-2700		(2x) 3550-3700		(1x) 5150-5925
	Array	<div></div> Y1	<div></div> Y2	<div></div> P1	<div></div> P2	<div></div> O1
	Connector	1-2	3-4	5-6	7-8	9-10
	Polarization	XPOL	XPOL	XPOL	XPOL	XPOL
	Electrical Downtilt	2°, 6°, 10°		0°		0°
	Azimuth Beamwidth (avg)	65°		40°		53°
	Total Connector Count	10 PORTS				
	Connector Type	4.3-10 FEMALE				
	Dimensions	617 x 300 x 170 mm (24.3 x 11.8 x 6.7)				

ELECTRICAL SPECIFICATIONS Mid Band

■ Y1 ■ Y2

Frequency Range		MHz	(2x) 1695-2700			
Frequency Sub-Range		MHz	1695-1880	1850-1990	1920-2200	2300-2700
Polarization		---	(2x) ±45°			
Gain	BASTA	dBi	14.3 ± 0.5	14.6 ± 0.4	14.5 ± 0.6	14.3 ± 0.7
	MAX	dBi	14.8	15.0	15.1	15.0
Azimuth Beamwidth (3 dB)		degrees	65.4° ± 5.6°	66.2° ± 3.1°	67.4° ± 4.6°	68.8° ± 4.1°
Elevation Beamwidth (3 dB)		degrees	18.4° ± 1.1°	17.2° ± 0.4°	16.2° ± 1.5°	13.3° ± 1.1°
Electrical Downtilt		degrees	(x) 2°, 6°, 10°			
Impedance		Ohms	50Ω			
VSWR		---	≤ 1.5:1			
Passive Intermodulation 3rd Order for 2x20 W Carriers		dBc	< -153			
Upper Sidelobe Suppression		dB	15			
Maximum Power Per Port		Watts	(4x) 300 W			
Isolation	Intraband	dB	> 25	> 25	> 25	> 25
	Interband	dB	> 28	> 28	> 28	> 28

Quoted performance parameters are provided to offer typical, peak or range values only and may vary as a result of normal testing, manufacturing and operational conditions. Extreme operational conditions and/or stress on structural supports is beyond our control. Such conditions may result in damage to this product. Improvements to products may be made without notice.

2U3MX065X06F_{xy}s0

ELECTRICAL SPECIFICATIONS CBRS Band

■ P1 ■ P2

Frequency Range		MHz	(2x) 3550-3700
Polarization		---	(2x) ±45°
Gain	BASTA	dBi	10.8 ± 0.8
	MAX	dBi	11.6
Azimuth Beamwidth (3 dB)		degrees	40.2° ± 17.3°
Elevation Beamwidth (3 dB)		degrees	33.4° ± 3.9°
Electrical Downtilt		degrees	(y) 0°
Impedance		Ohms	50Ω
VSWR		---	≤ 1.5:1
Passive Intermodulation 3rd Order for 2x20 W Carriers		dBc	N/A
Upper Sidelobe Suppression		dB	N/A
Maximum Power Per Port		Watts	(4x) 100 W
Isolation	Intraband	dB	> 25
	Interband	dB	> 28

ELECTRICAL SPECIFICATIONS LAA Band

■ O1

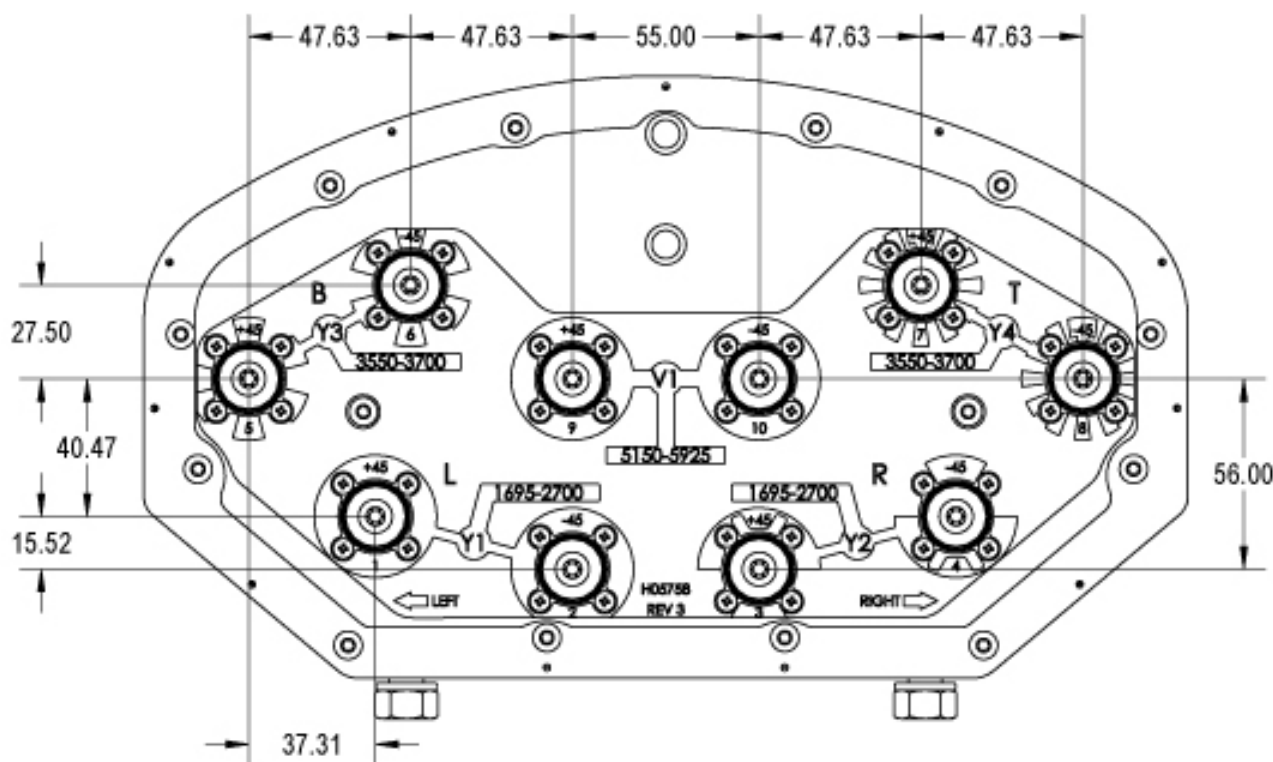
Frequency Range		MHz	(1x) 5150-5925
Polarization		---	±45°
Gain	BASTA	dBi	5.1 ± 0.7
	MAX	dBi	5.8
Azimuth Beamwidth (3 dB)		degrees	53.7° ± 6.3°
Elevation Beamwidth (3 dB)		degrees	22.7° ± 3.2°
Electrical Downtilt		degrees	(y) 0°
Impedance		Ohms	50Ω
VSWR		---	≤ 1.5:1
Passive Intermodulation 3rd Order for 2x20 W Carriers		dBm (dBc)	N/A
Upper Sidelobe Suppression		dB	U-NII Compliant
Maximum Power Per Port		Watts	(2x) 50 W
Isolation	Intraband	dB	> 25
	Interband	dB	> 28

Quoted performance parameters are provided to offer typical, peak or range values only and may vary as a result of normal testing, manufacturing and operational conditions. Extreme operational conditions and/or stress on structural supports is beyond our control. Such conditions may result in damage to this product. Improvements to products may be made without notice.

2U3MX065X06F_{xy}s0

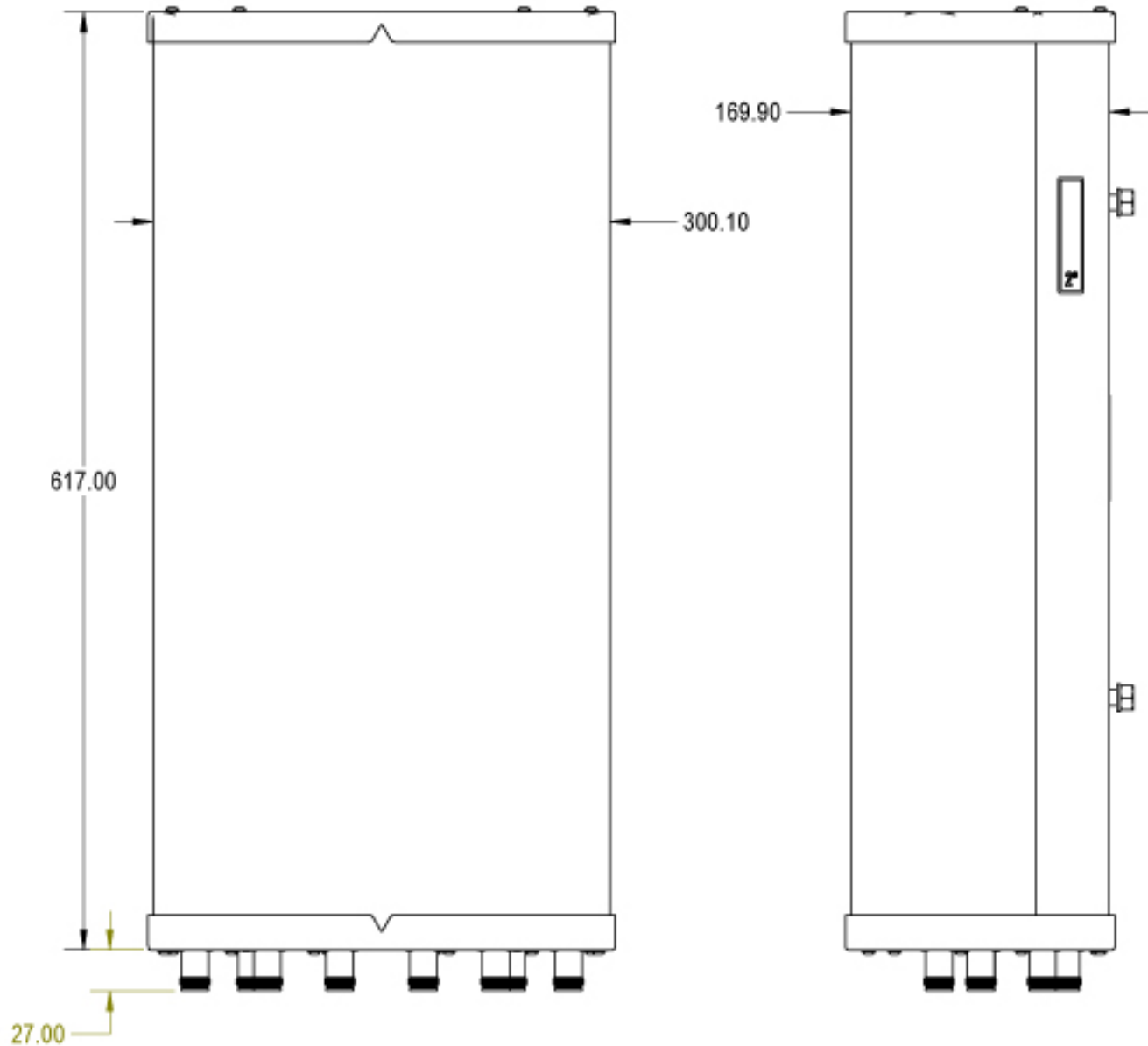
MECHANICAL SPECIFICATIONS

Antenna	Length	mm (in)	617 (24.3)
	Width	mm (in)	300 (11.8)
	Depth	mm (in)	170 (6.7)
Net Weight - Antenna Only		kg (lbs)	5.4 (12)
Windload	Calculation	km/h (mph)	160 (100)
	Front	N (lbf)	231 (52)
	Side	N (lbf)	129 (29)
Survival Wind Speed		km/h (mph)	241 (150)
Wind Area	Front	m ² (ft ²)	0.19 (2.0)
	Side	m ² (ft ²)	0.10 (1.1)
Connector	Type	---	4.3-10 Female
	Quantity	---	10
	Position	---	Bottom
Radome Color		---	Grey
Operating Temperature		degrees	-40 to +60 C (-40 to +140 F)
Lightning Protection (Grounding Type)		---	Direct Ground



Quoted performance parameters are provided to offer typical, peak or range values only and may vary as a result of normal testing, manufacturing and operational conditions. Extreme operational conditions and/or stress on structural supports is beyond our control. Such conditions may result in damage to this product. Improvements to products may be made without notice.

2U3MX065X06F_{xy}s0



INSTALLATION Please read all installation notes before installing this product.



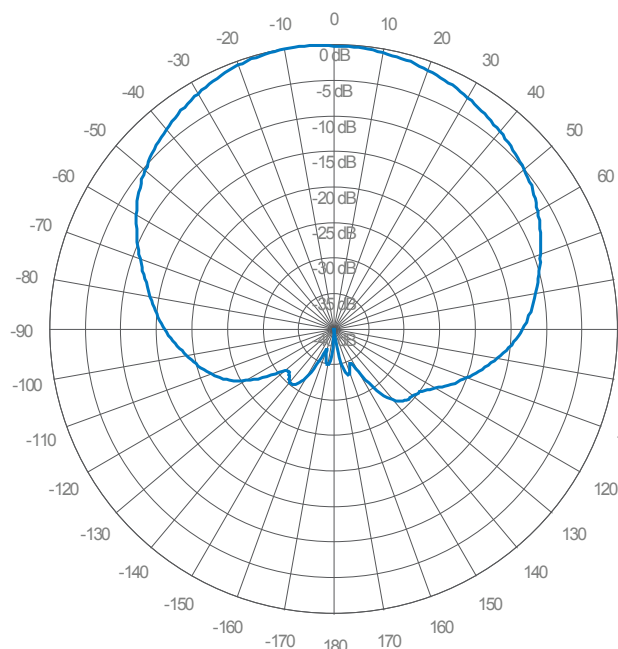
Always attach the antenna using all mounting points.

Do not install the antenna with the connectors facing upwards.

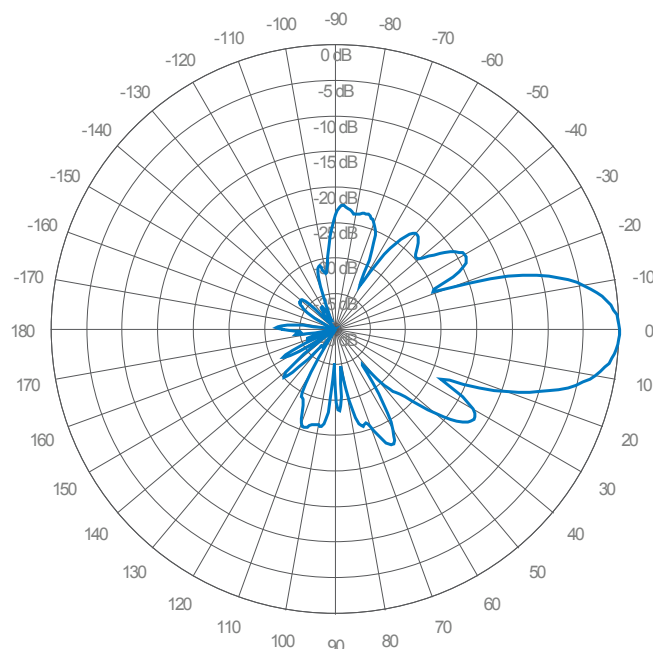
Quoted performance parameters are provided to offer typical, peak or range values only and may vary as a result of normal testing, manufacturing and operational conditions. Extreme operational conditions and/or stress on structural supports is beyond our control. Such conditions may result in damage to this product. Improvements to products may be made without notice.

2U3MX065X06F_{xys0}

MID BAND

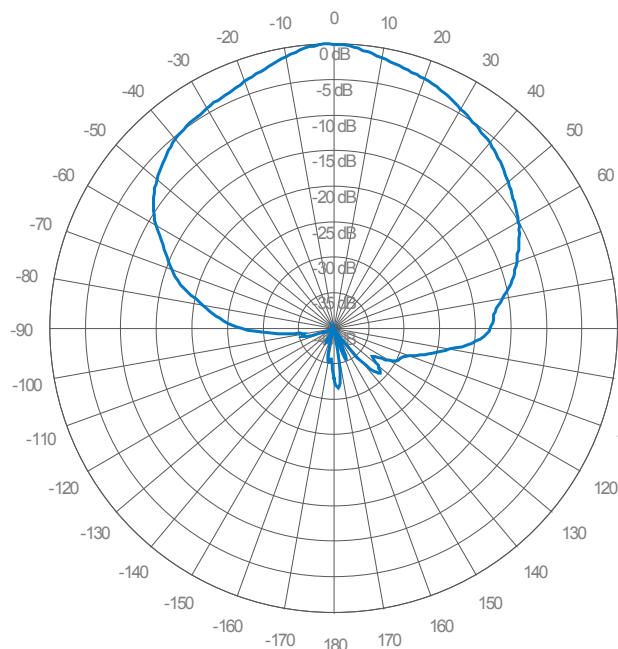


AZIMUTH
1695-2700 MHz

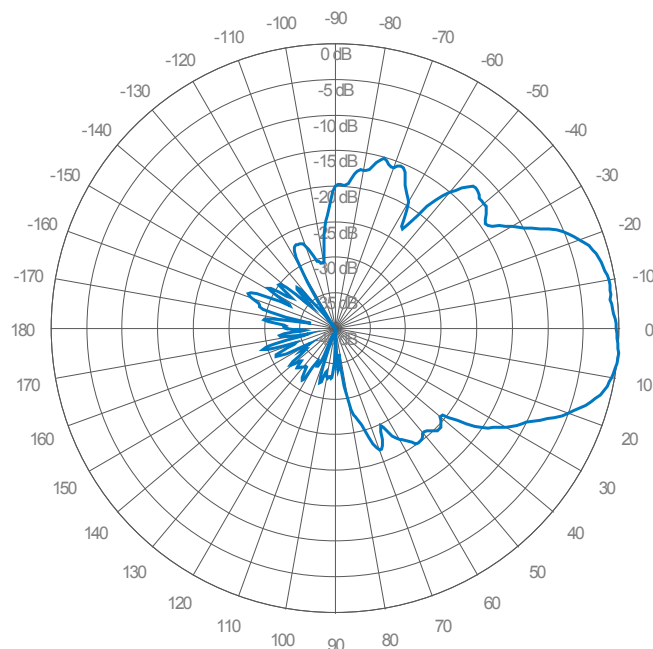


ELEVATION
1695-2700 MHz

CBRS BAND

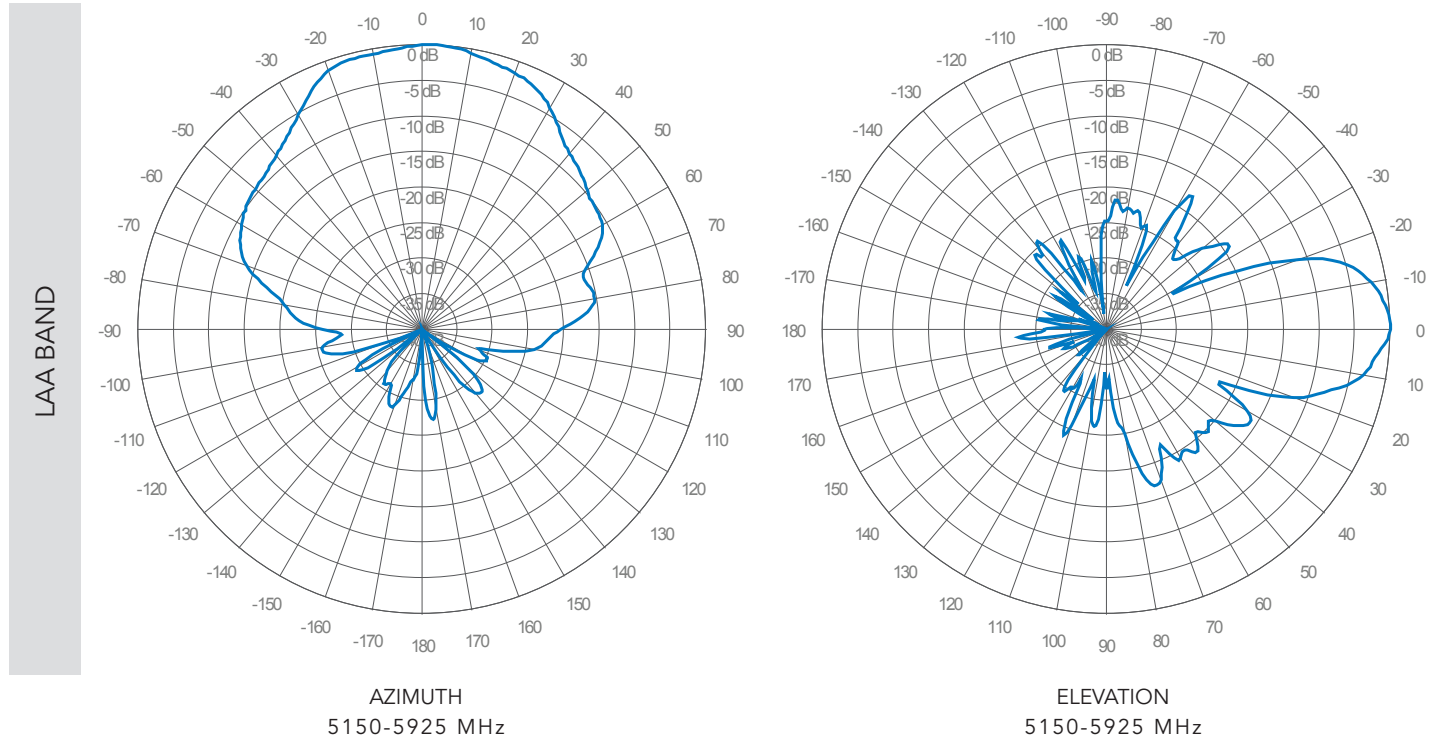


AZIMUTH
3550-3700 MHz



ELEVATION
3550-3700 MHz

2U3MX065X06F_{xy}s0



2U3MX065X06F_{xys0}

MOUNTING KITS Select from the following mounting options when ordering.

MODEL NUMBER	DESCRIPTION	FITS PIPE DIAMETER	WEIGHT
MKS09P01	2-POINT MOUNTING BRACKET KIT	50-115 mm (2.0-4.5 in)	2.9 kg (6 lbs)
MKS09T01	2-POINT, SCISSOR TILT, MOUNTING & DOWNTILT BRACKET KIT	50-115 mm (2.0-4.5 in)	4.5 kg (10 lbs)
11100010	CONTINUOUS ADJUSTMENT "STADIUM" MOUNTING BRACKET KIT - WALL OR POLE MOUNT <i>Allows continuous adjustment of the azimuth and elevation; Straps for pole mounting are NOT included.</i>	50-203 mm (2.0-8.0 in)	2.4 kg (5.4 lbs)



The antennas shown in the mounting kit illustrations above are generic representations and may not resemble the antenna described within this data sheet.

2U3MX065X06F_{xys0}

ORDERING OPTIONS Select from the following ordering options

SELECT MOUNTING KIT	SELECT DEGREE OF ELECTRICAL DOWNTILT FOR EACH BAND			ORDER MODEL NUMBER
	MID BAND	CBRS BAND	LAA BAND	
ANTENNA ONLY - NO MOUNTING KIT	2°	0°	0°	2U3MX065X06F20s0
	6°	0°	0°	2U3MX065X06F60s0
	10°	0°	0°	2U3MX065X06F100s0
ANTENNA WITH MKS09P01 MOUNTING KIT 2-Point Mounting Bracket Kit	2°	0°	0°	2U3MX065X06F20s0-P
	6°	0°	0°	2U3MX065X06F60s0-P
	10°	0°	0°	2U3MX065X06F100s0-P
ANTENNA WITH MKS09T01 MOUNTING KIT 2-Point, Scissor Tilt, Mounting & Downtilt Bracket Kit	2°	0°	0°	2U3MX065X06F20s0-T
	6°	0°	0°	2U3MX065X06F60s0-T
	10°	0°	0°	2U3MX065X06F100s0-T
ANTENNA WITH 11100010 MOUNTING KIT Continuous Adjustment "Stadium" Mounting Bracket Kit	2°	0°	0°	2U3MX065X06F20s0-S
	6°	0°	0°	2U3MX065X06F60s0-S
	10°	0°	0°	2U3MX065X06F100s0-S